

THE

BARRETO

**MODELS 920LS-922LS SERIES
HYDRAULIC LOG SPLITTER EXPLODED
VIEWS WITH PART NUMBERS**

CONGRATULATIONS!

You are now the proud owner of a BARRETO log splitter. The following pages have detailed views of your log splitter, along with corresponding part numbers. If you have any questions or need any replacement parts in the future, please contact us at your convenience. Our toll-free phone number, fax and email are listed below and parts may be ordered through any of these methods.

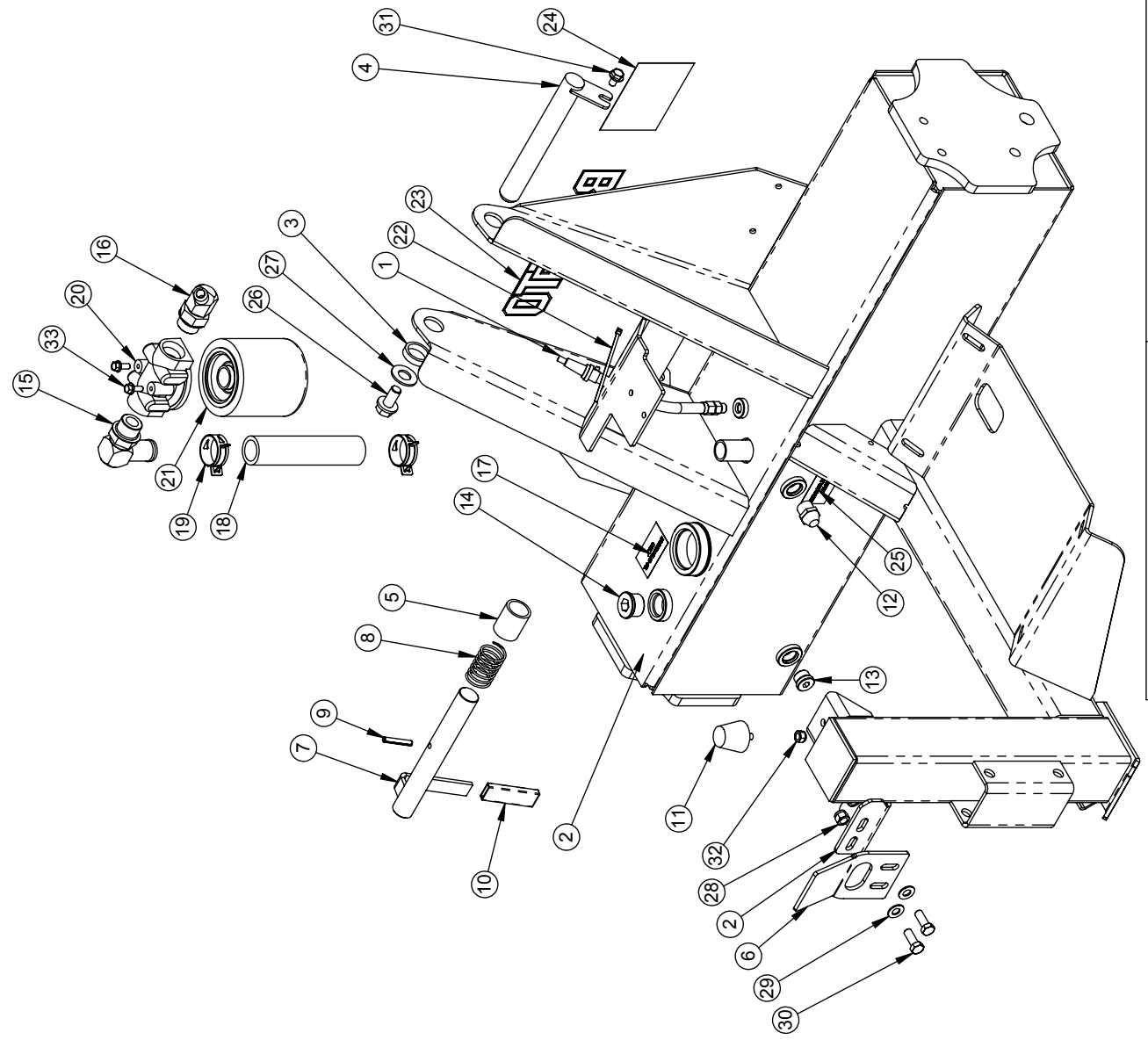
THANK YOU for your patronage and confidence in BARRETO equipment.

Barreto Manufacturing, Inc.
Innovative Equipment Engineered to Last
66498 Hwy 203, La Grande, OR 97850
(800) 525-7348 (541) 963-7348
FAX (541) 963-6755
E-Mail: info@barretomfg.com
Web Site: <http://www.barretomfg.com>

Machine Identification Record

Barreto Customer number _____
Machine model number _____
Machine serial number _____
Engine manufacturer _____
Engine model number _____
Engine serial number _____

REF	QTY	PART NO.	DESCRIPTION
1	1	00345 R1	BREATHER HOSE ASSEMBLY
2	1	11482 R1	FRAME, SIDE WHEELS
3	1	11343	SPACER, PIVOT PIN
4	1	11344	PIVOT PIN
5	1	10580	SPACER, LATCH PIN
6	1	11204	STRIKER PLATE
7	1	10579	LATCH PIN
8	1	10592	SPRING
9	1	05334	ROLL PIN (SLOTTED SPRING), 1/4 X 1-1/2 ZINC
10	1	03018	GRIP, 1/8 X 3/4 X 2-3/4
11	1	11258	RUBBER BUMPER
12	1	03503	SIGHT GAUGE
13	1	10361	FITTING, 6409-8 PLUG
14	1	10526	FITTING, 6409-12 PLUG
15	1	04530	FITTING, 4601-16-12
16	1	04229	FITTING, 6802-8-12
17	1	03040-06	DECAL, "HYDRAULIC OIL ONLY"
18	1	11193	HOSE, RETURN TO TANK
19	2	05225	CLAMP, 1" ID HOSE, CTB-35 ST
20	1	04403	FILTER HEAD, #12 O-RING
21	1	03951	FILTER, HYDRAULIC OIL, WITH BY-PASS
22	1	03035	TIE WRAP, 1/8 X 6
23	1	03040-02	DECAL, "BARRETO", 3-1/2 X 11-1/4
24	1	03040-14	DECAL, "45 MPH"
25	1	03040-57	DECAL, "HYDRAULIC OIL LEVEL"
26	1	05593	HH FLANGE SCREW, 1/2-13 NC X 1 G5 ZINC
27	1	05272	WASHER, 5/8 SAE ZINC HARDENED
28	2	05073	NUT, NYLOCK, 3/8-16 NC ZINC
29	2	05103	WASHER, 3/8 A325 HARDENED ZINC
30	2	05059	HH CAP SCREW, 3/8-16 NC X 1 G5 ZINC
31	1	05169	WHIZ-LOCK 5/16 - 18 X 1/2
32	1	05273	NUT, NYLOCK, 5/16-18 NC ZINC
33	2	05069	WHIZ LOCK, 1/4-20 NC X 5/8 ZINC



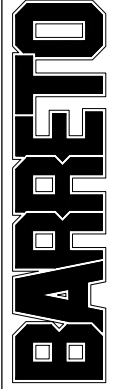
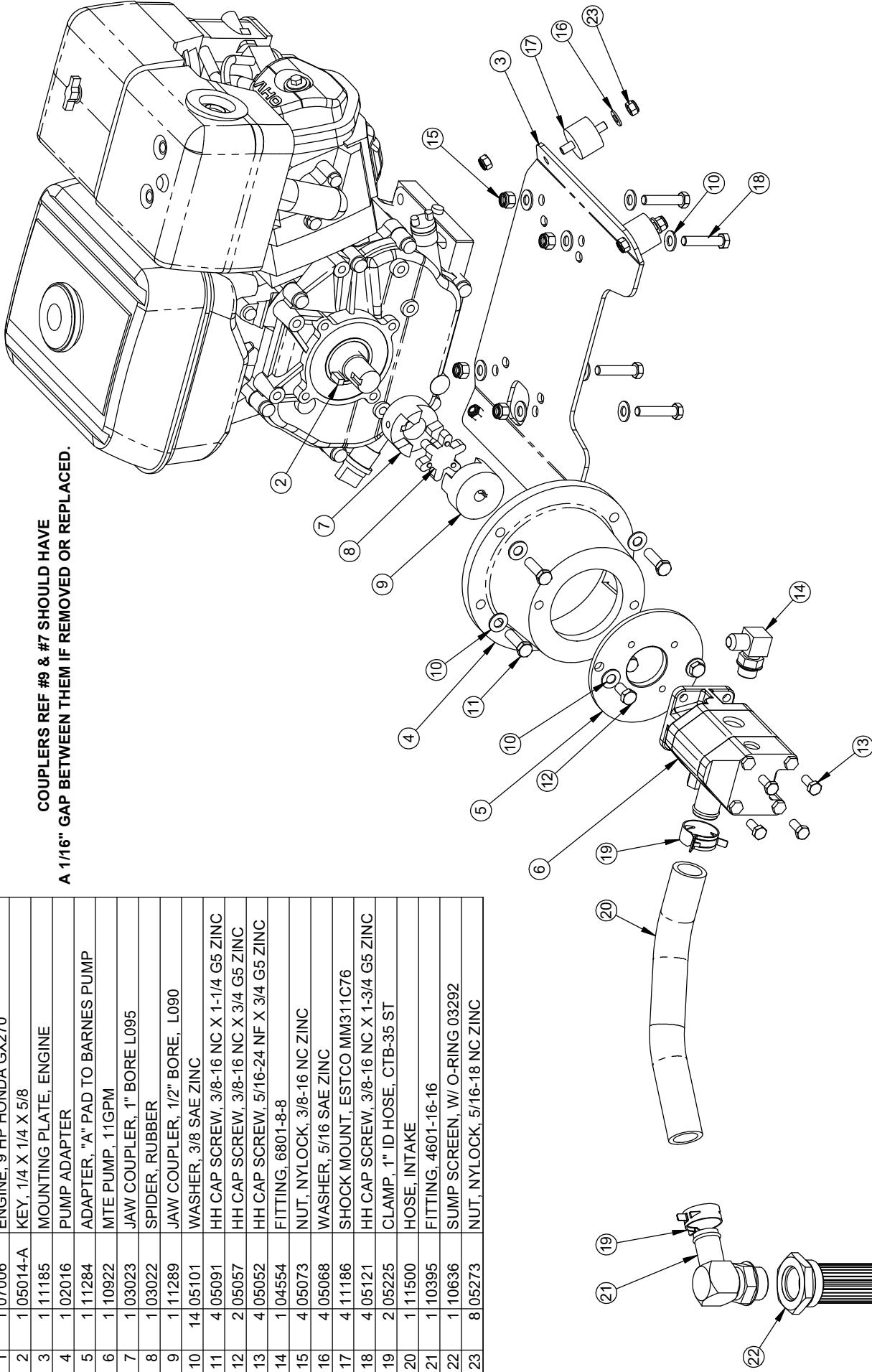
BARRETO

TITLE: FRAME

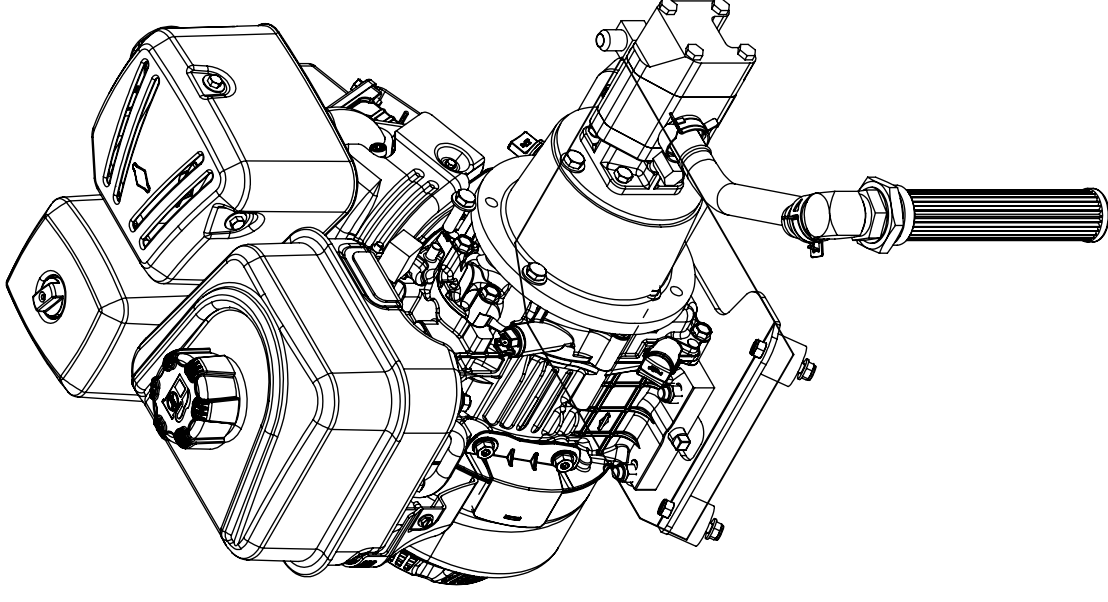
PRODUCT LINE: 920LS & 922LS DATE: 8/7/09
 SCALE: 1:8 DWG# 00341 R5
 SHEET 1 OF 1

COUPLERS REF #9 & #7 SHOULD HAVE A 1/16" GAP BETWEEN THEM IF REMOVED OR REPLACED.

ITEM NO.	QTY.	PART NO.	DESCRIPTION
1	1	07006	ENGINE, 9 HP HONDA GX270
2	1	05014-A	KEY, 1/4 X 1/4 X 5/8
3	1	11185	MOUNTING PLATE, ENGINE
4	1	02016	PUMP ADAPTER
5	1	11284	ADAPTER, "A" PAD TO BARNES PUMP
6	1	10922	MTE PUMP, 11GPM
7	1	03023	JAW COUPLER, 1" BORE L095
8	1	03022	SPIDER, RUBBER
9	1	11289	JAW COUPLER, 1/2" BORE, L090
10	14	05101	WASHER, 3/8 SAE ZINC
11	4	05091	HH CAP SCREW, 3/8-16 NC X 1-1/4 G5 ZINC
12	2	05057	HH CAP SCREW, 3/8-16 NC X 3/4 G5 ZINC
13	4	05052	HH CAP SCREW, 5/16-24 NF X 3/4 G5 ZINC
14	1	04554	FITTING, 6801-8-8
15	4	05073	NUT, NYLOCK, 3/8-16 NC ZINC
16	4	05068	WASHER, 5/16 SAE ZINC
17	4	11186	SHOCK MOUNT, ESTCO MM311C76
18	4	05121	HH CAP SCREW, 3/8-16 NC X 1-3/4 G5 ZINC
19	2	05225	CLAMP, 1" ID HOSE, CTB-35 ST
20	1	11500	HOSE, INTAKE
21	1	10395	FITTING, 4601-16-16
22	1	10636	SUMP SCREEN, W/ O-RING 03292
23	8	05273	NUT, NYLOCK, 5/16-18 NC ZINC



ITEM NO.	PART NUMBER	DESCRIPTION	QTY.
1	05014-A	KEY, 1/4 X 1/4 X 5/8	1
2	11185	MOUNTING PLATE, ENGINE	1
3	02016	PUMP ADAPTER	1
4	11284	ADAPTER, "A" PAD TO BARNES PUMP	1
5	10922	MTE PUMP, 11GPM	1
6	03023	JAW COUPLER, 1" BORE L095	1
7	03022	SPIDER, RUBBER	1
8	11289	JAW COUPLER, 1/2" BORE, L090	1
9	05101	WASHER, 3/8 SAE ZINC	14
10	05068	WASHER, 5/16 SAE ZINC	4
11	05091	HH CAP SCREW, 3/8-16 NC X 1-1/4 G5 ZINC	4
12	05057	HH CAP SCREW, 3/8-16 NC X 3/4 G5 ZINC	2
13	05052	HH CAP SCREW, 5/16-24 NF X 3/4 G5 ZINC	4
14	05121	HH CAP SCREW, 3/8-16 NC X 1-3/4 G5 ZINC	4
15	04554	FITTING, 6801-8-8	1
16	05073	NUT, NYLOCK, 3/8-16 NC ZINC	4
17	05273	NUT, NYLOCK, 5/16-18 NC ZINC	8
18	11186	SHOCK MOUNT, ESTCO MM311C76	4
19	05225	CLAMP, 1" ID HOSE, CTB-35 ST	2
20	11500	SUCTION HOSE	1
21	10395	FITTING, 4601-16-16	1
22	10636	SUMP SCREEN, W/ O-RING 03292	1
23	07036	ENGINE, BRIGGS VANGUARD 10HP	1



RELEASE DATE	01/25/2022
REVISED DATE	NEW
REVISION #	0

BARRETO

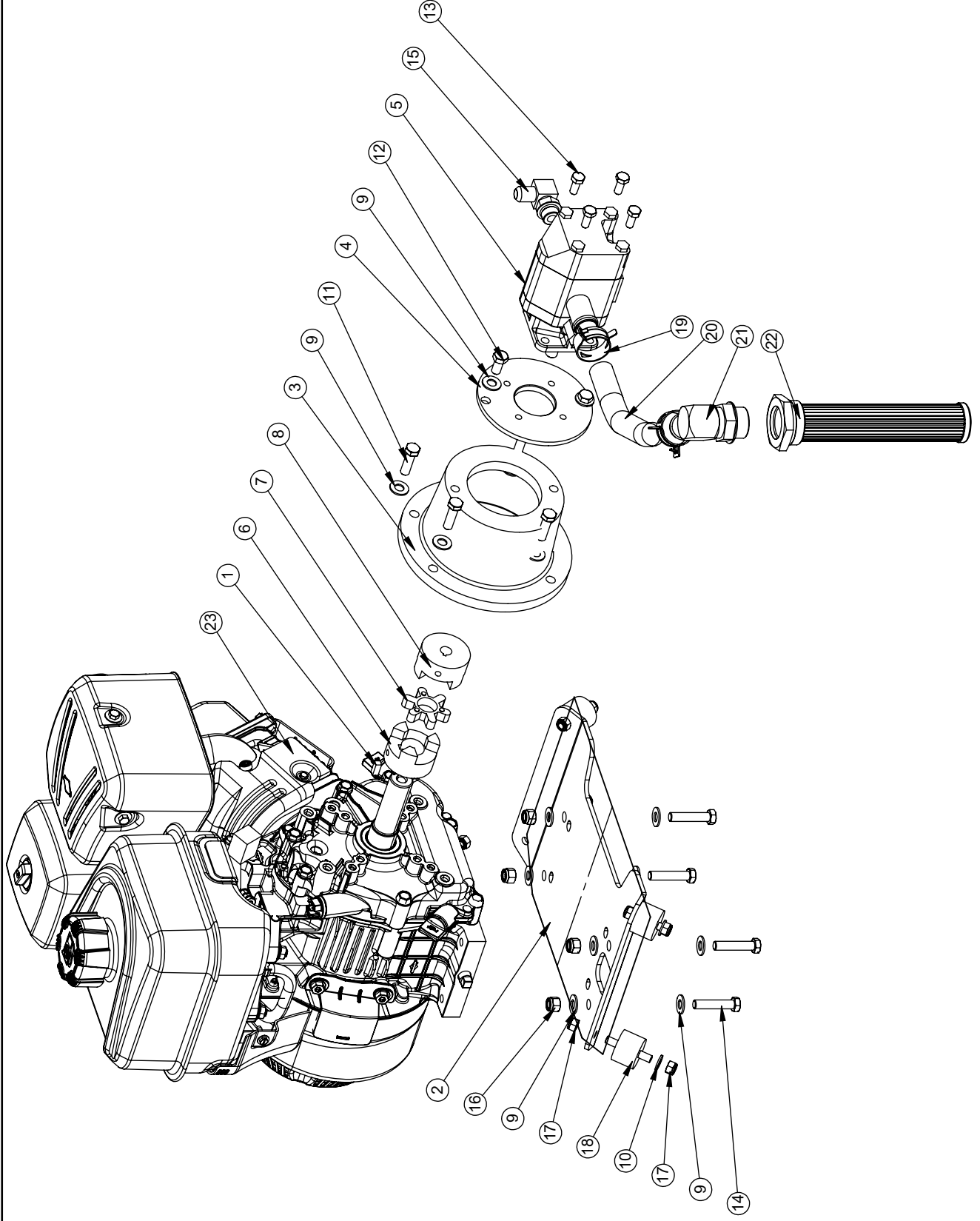
TITLE: ENGINE & PUMP, 10HP BRIGGS

PRODUCT LINE: LOG SPLITTER

SCALE: 1:6

DWG# 00342-10B

SHEET 1 OF 2



TITLE: ENGINE & PUMP, 10HP BRIGGS

PRODUCT LINE: LOG SPLITTER

SCALE: 1:6

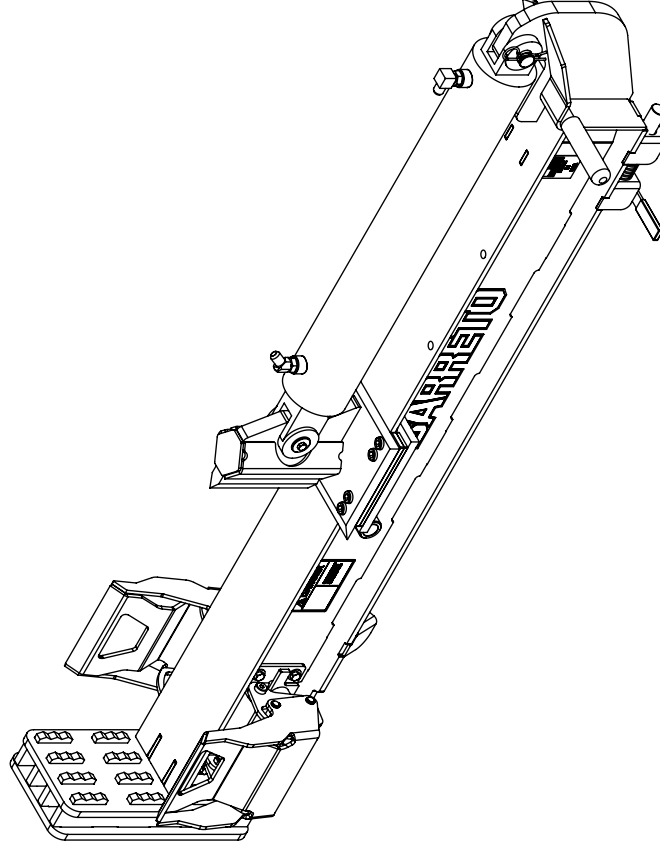
DWG# 00342-10B

SHEET 2 OF 2

BARRETO

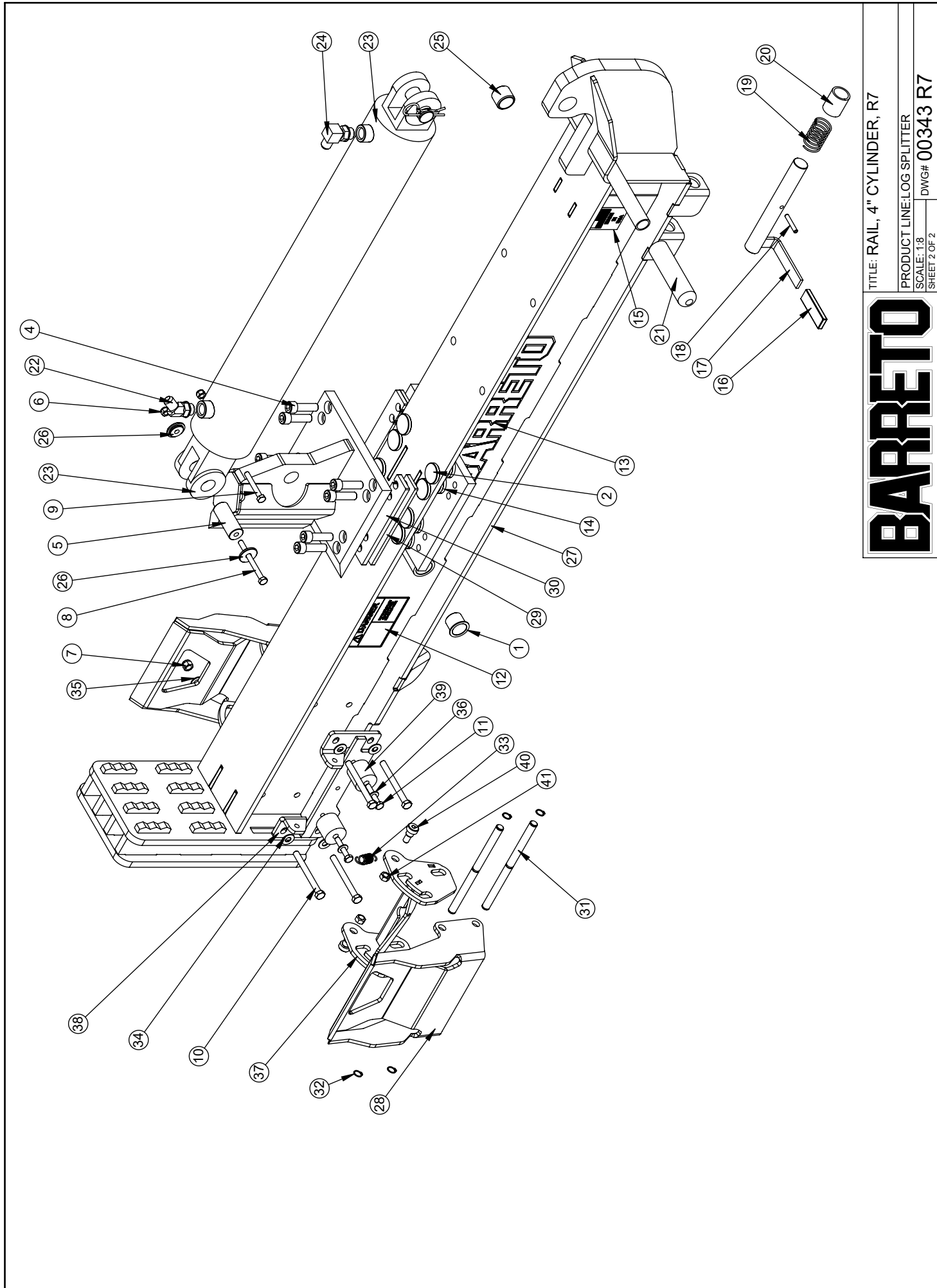
RELEASE DATE	12/10/2020
REVISED DATE	NEW
REVISION #	0

ITEM NO.	PART NUMBER	DESCRIPTION	QTY.
1	03269	BUSHING, IGUS LFI-1618-16	2
2	11299	WEAR PAD	16
3	11585	WEDGE, 4" CYLINDER	1
4	05587	SH CAP SCREW, 1/2-13 NC X 1-3/4 ZINC	8
5	11332-2.5	CLEVIS PIN, 1" DIA. x 2.5	1
6	05273	NUT, NYLOCK, 5/16-18 NC ZINC	2
7	05072	NUT, NYLOCK, 3/8-24 NF ZINC	4
8	05246	HH CAP SCREW, 5/16-18 NC X 3-1/2 G5 ZINC	1
9	05175	HH CAP SCREW, 5/16-18 NC X 2-1/4 G5 ZINC	1
10	05313	HH CAP SCREW, 3/8-24 NF X 3-3/4 G8 ZN	4
11	05054	HH CAP SCREW, 5/16-18 NC X 1-3/4 G5 ZINC	4
12	04420-04	DECAL, DANGER KEEP HANDS CLEAR	2
13	03040-02	DECAL, "BARRETO", 3-1/2 X 11-1/4	2
14	11302	WEDGE RETAINER	2
15	03040-01	DECAL, "MADE IN USA"	2
16	03018	GRIP, 1/8 X 3/4 X 2-3/4	1
17	10579	LATCH PIN	1
18	05334	ROLL PIN (SLOTTED SPRING), 1/4 X 1-1/2 ZINC	1
19	10592	SPRING	1
20	10580	SPACER, LATCH PIN	1
21	03032-01	GRIP, 1 X 5 (P/N 03032 IS A PAIR)	1
22	04210	FITTING, 6802-8-8	1
23	10943	CYLINDER, 4 X 24; BJ-0072	1
24	04554	FITTING, 6801-8-8	1
25	10079	BUSHING, CONNEX 1.25 X 1 X 1	1
26	11332-WA	PIN CAP	2
27	19530	WELDED RAIL	1
28	19519 R1	LOG HOLDER	2
29	19532	WEDGE SPACER- 1/4"	2
30	19533	WEDGE SPACER- 5/16"	2
31	19520 R1	LOG HOLDER ROD	4
32	05506	SNAP RING, 1/2" EXTERNAL, SH-50	8
33	12449	SPRING, CENTURY 5369	2
34	05058	WASHER, 3/8 NYLON	4
35	05101	WASHER, 3/8 SAE ZINC	4
36	05068	WASHER, 5/16 SAE ZINC	4
37	19518 R1	LOG HOLDER BRACKET R1	2
38	19547	PIVOT BRACKET	2
39	02615-A	NEOPRENE PAD	4
40	05185	SHSB, 1/2S X 3/8SL X 3/8 NC, BK OX	4
41	05358	NUT, GRIPCO, 3/8-24 NF G8 ZINC	4



BARRETO

TITLE:	RAIL, 4" CYLINDER, R7
PRODUCT LINE:	LOG SPLITTER
SCALE:	1:8
SHEET:	1 OF 2
DWG#	00343 R7



TITLE: RAIL, 4" CYLINDER, R7

PRODUCT LINE: LOG SPLITTER

SCALE: 1:8

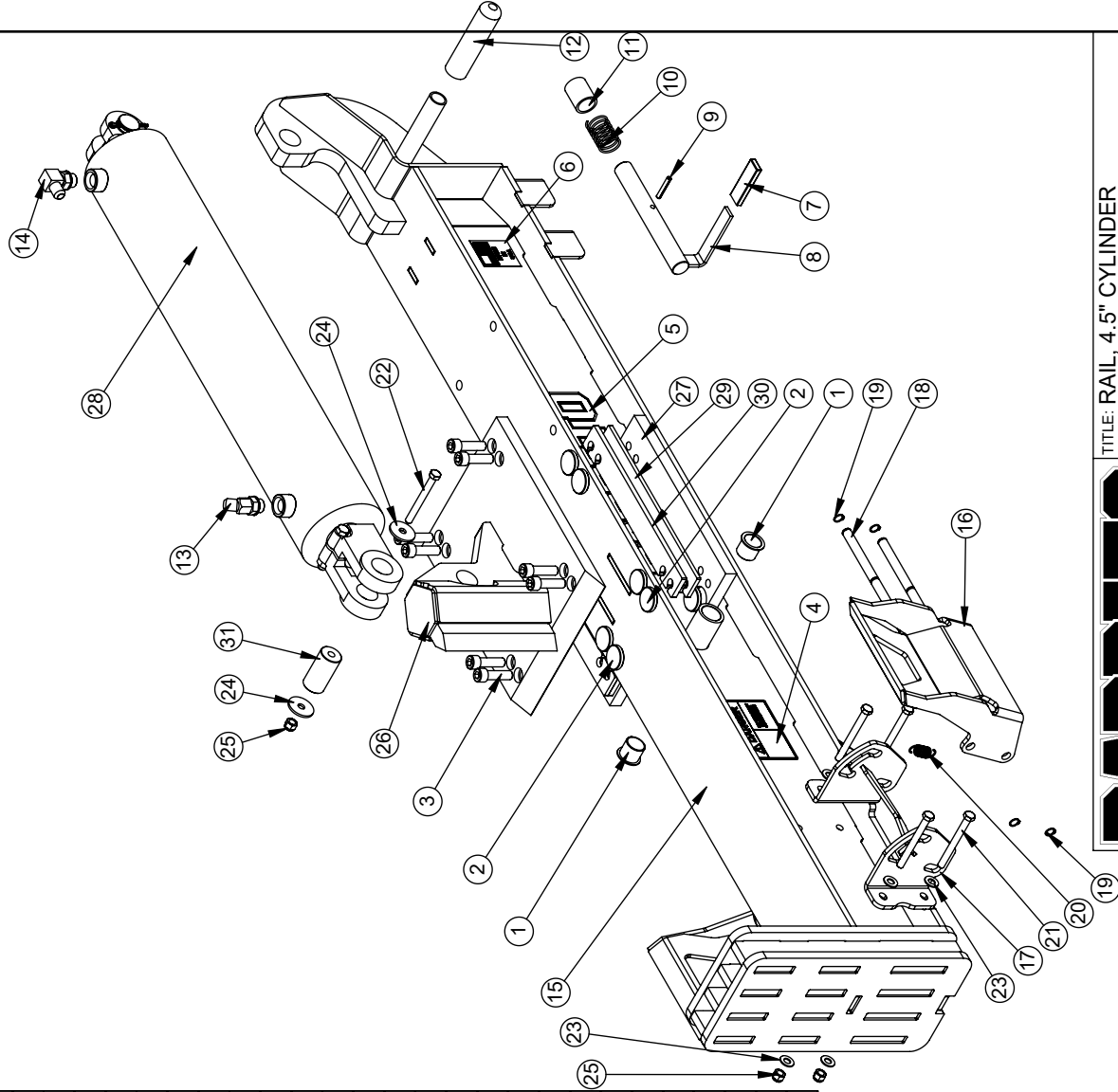
DWG# 00343 R7

SHEET 2 OF 2

BARRETO

RELEASE DATE	12/11/2019
REVISED DATE	NEW
REVISION #	0

ITEM NO.	PART NUMBER	DESCRIPTION	QTY.
1	03269	BUSHING, IGUS LFI-1618-16	2
2	11299	WEAR PAD	16
3	11589	SH CAP SCREW, 1/2-13 NF X 1-3/4 ZINC	8
4	04420-04	DECAL, DANGER KEEP HANDS CLEAR	2
5	03040-02	DECAL, "BARRETO", 3-1/2 X 11-1/4	2
6	03040-01	DECAL, "MADE IN USA"	2
7	03018	GRIP, 1/8 X 3/4 X 2-3/4	1
8	10579	LATCH PIN	1
9	05334	ROLL PIN (SLOTTED SPRING), 1/4 X 1-1/2 ZINC	1
10	10592	SPRING	1
11	10580	SPACER, LATCH PIN	1
12	03032-01	GRIP, 1 X 5 (P/N 03032 IS A PAIR)	1
13	04210	FITTING, 6802-8-8	1
14	04554	FITTING, 6801-8-8	1
15	19530	WELDED RAIL	1
16	19519	LOG HOLDER	2
17	19518	LOG HOLDER FRAME	2
18	19520	LOG HOLDER ROD	4
19	05506	SNAP RING, 1/2" EXTERNAL, SH-50	8
20	12449	SPRING, CENTURY 5369	2
21	05313	HH CAP SCREW, 3/8-24 NF X 3-3/4 G8 ZN	4
22	10740	HH CAP SCREW, 3/8-24 NF X 3-1/2 G5 ZINC	1
23	05101	WASHER, 3/8 SAE ZINC	8
24	05540	WASHER, 3/8 FENDER ZINC	2
25	05072	NUT, NYLOCK, 3/8-24 NF ZINC	5
26	11484	WEDGE	1
27	11487	WEDGE RETAINER	2
28	11493	CYLINDER, 4-1/2 X 24	1
29	19534	WEDGE SPACER 22T- 1/4"	2
30	19535	WEDGE SPACER 22T- 5/16"	2
31	11461-2.4	CLEVIS PIN, 1.25 X 2.44	1



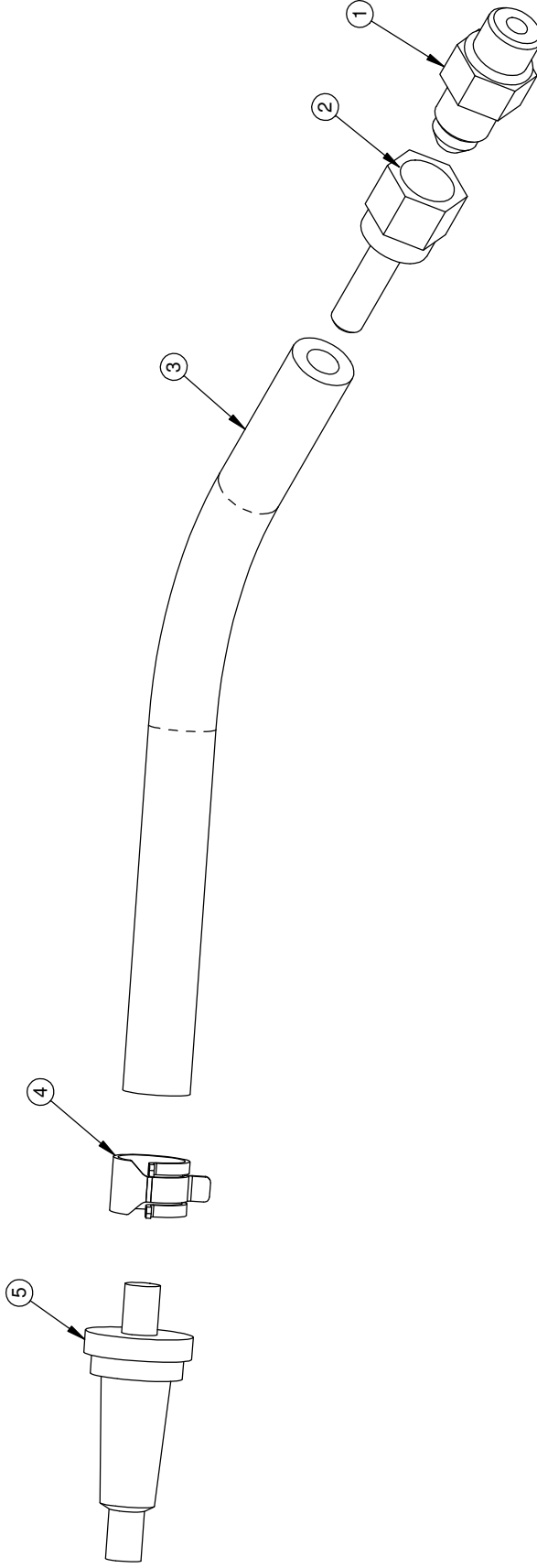
TITLE: RAIL, 4.5" CYLINDER

PRODUCT LINE:
SCALE: 1:10
SHEET 1 OF 1

DWG# 00343-4.5 R2

BARRETO

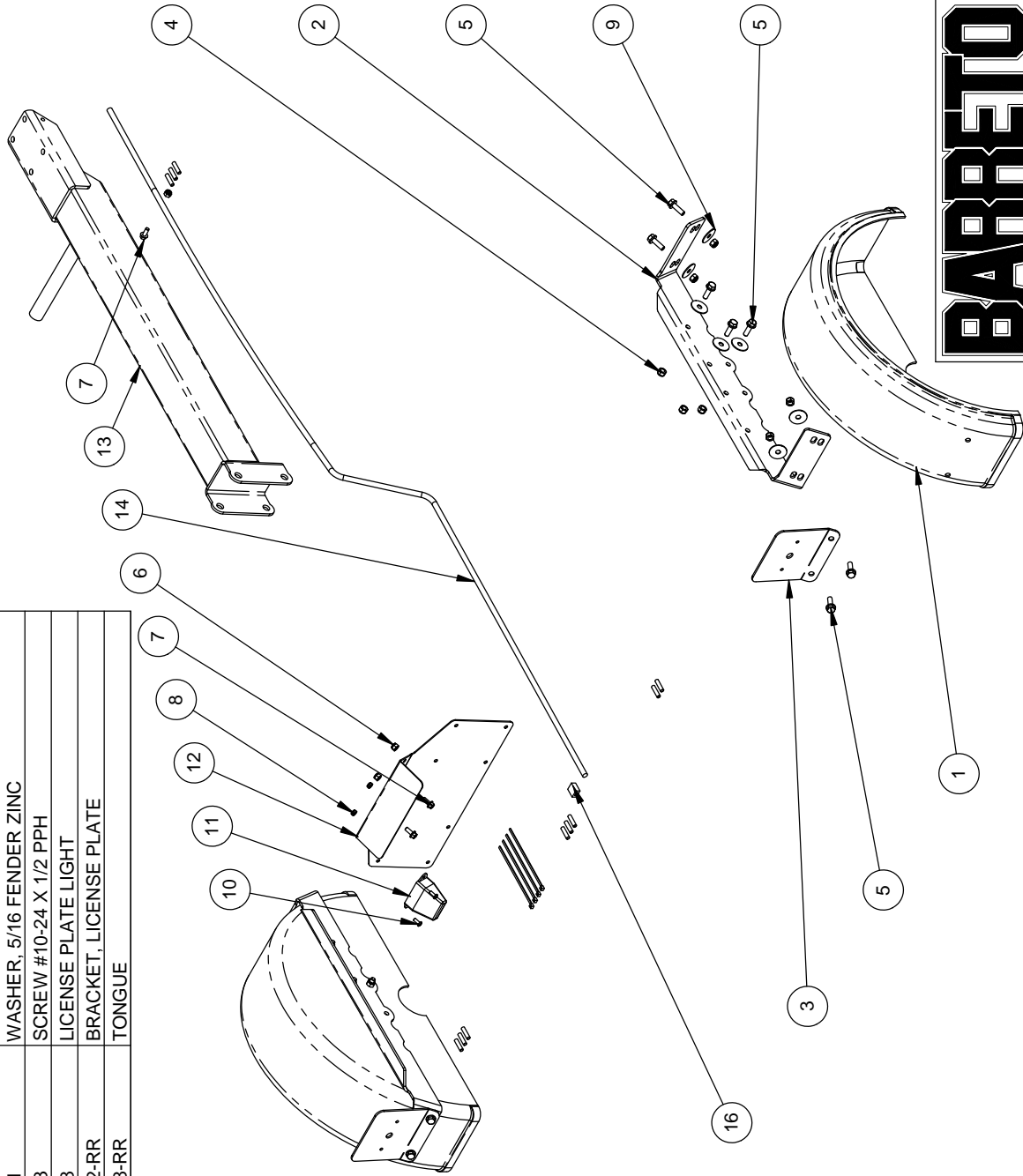
REF.	QTY.	PART NO.	DESCRIPTION
1	1	04560	FITTING, 6400-4-4
2	1	04214	FITTING, JS-4-4, HOSE BARB 1/4 X 1/4 SWIVEL
3	1	11596	HOSE, 1/4 INCH GASOLINE, 4L5, 6" LONG
4	1	03062-06	CLAMP, 1/4" FUEL LINE
5	1	04516	BREATHER, FILTER SNAPPER 1435



BARRETO

TITLE: BREATHER HOSE ASSEMBLY
 PRODUCT LINE: 620, 920, & 922LS DATE: 7/28/08
 SCALE: 1:1.3 DWG#: 00345 R1
 SHEET 1 OF 1

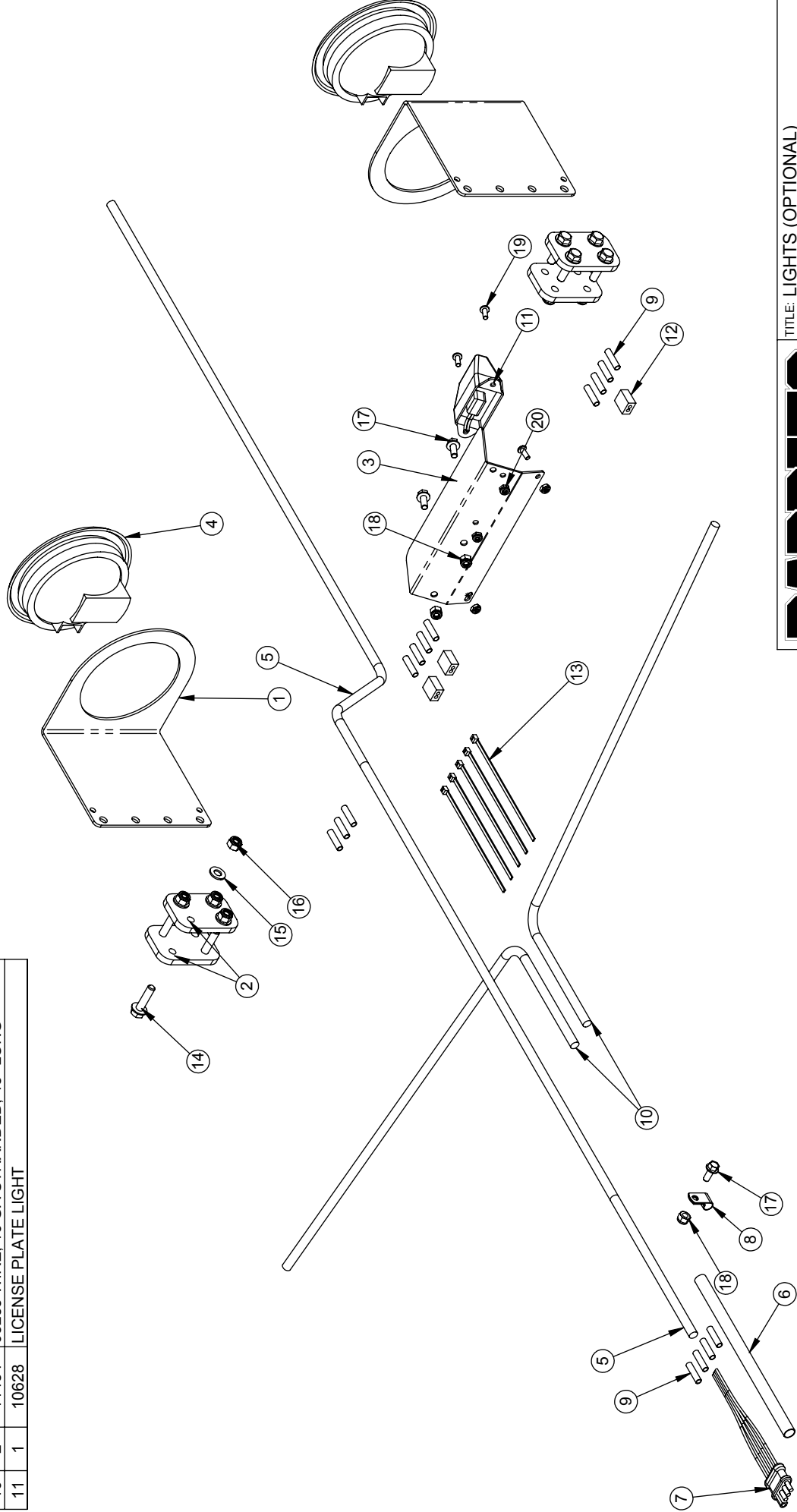
ITEM NO.	QTY.	PART NO.	DESCRIPTION	ITEM NO.	QTY.	PART NO.	DESCRIPTION
1	2	ROO-FENDER-23in	FENDER, CUSTOMER SUPPLIED	14	1	11048	WIRE CABLE, 4X 14 GA STRANDED, 8' LONG
2	2	12108	ROO FENDER MOUNT	15	15	05343	BUTT SPLICE
3	2	12109	MOUNTING BRACKET, TAIL LIGHT	16	3	03806	QUICK-SPLICE
4	14	05273	NUT, NYLOCK, 5/16-18 NC ZINC	17	5	03035	TIE WRAP, 1/8 X 6
5	14	05567	HH FLANGE SCREW, 5/16-18 NC X 1" G88 ZINC	18	1	11454	WIRE CABLE, 4X 14 GA STRANDED, 40" LONG
6	3	05096	NUT, NYLOCK, 1/4-20 NC ZINC	19	1	11455	WIRE CABLE, 4X 14 GA STRANDED, 45" LONG
7	3	05069	WHIZ LOCK, 1/4-20 NC X 5/8 ZINC	20	1	11238	CABLE CLAMP, RICHCO SPN-5
8	2	05345	NUT, NYLOCK, 10-24 NC ZINC	21	1	11606	HEAT SHRINK TUBE, 1/2 X 9
9	14	05541	WASHER, 5/16 FENDER ZINC				
10	2	05233	SCREW #10-24 X 1/2 PPH				
11	1	10628	LICENSE PLATE LIGHT				
12	1	11202-RR	BRACKET, LICENSE PLATE				
13	1	11208-RR	TONGUE				



BARRETO

TITLE: FENDER, LIGHT & RECIEVER
MOUNTS, RED ROO
PRODUCT LINE: LSH, RED ROO DATE: 3/13
SCALE: 1:12 SHEET 1 OF 1 DWG# 00413

REF QTY.	PART NO.	DESCRIPTION	REF QTY.	PART NO.	DESCRIPTION
1	2	11198 MOUNTING BRACKET, TAIL LIGHT	12	3	03806 QUICK-SPLICE
2	4	11981 RUBBER MOUNT, TAIL LIGHT	13	5	03035 TIE WRAP, 1/8 X 6
3	1	11202 R1 BRACKET, LICENSE PLATE	14	8	05138 HHFS 5/16-18 X 1-1/4, G5, ZN
4	2	11206 TAIL LAMP, OPTIONAL	15	8	05068 WASHER, 5/16 SAE ZINC
5	1	11048 03253 WIRE 16 GA STRANDED, 8' LONG	16	8	05273 NUT, NYLOCK, 5/16-18 NC ZINC
6	1	11606 HEAT SHRINK TUBE, 1/2 X 9	17	3	05069 WHIZ-LOCK 1/4 - 20 X 5/8
7	1	03264 PLUG, FLAT 4 MALE	18	3	05096 NUT, NYLOCK, 1/4-20 NC ZINC
8	1	11238 CABLE CLAMP, RICHCO SPN-5	19	4	05233 SCREW #10-24 X 1/2 PPH
9	15	05343 BUTT SPLICE	20	4	05345 NUT, NYLOCK, 10-24 NC ZINC
10	2	11454 03253 WIRE, 16 GA STRANDED, 48" LONG			
11	1	10628 LICENSE PLATE LIGHT			



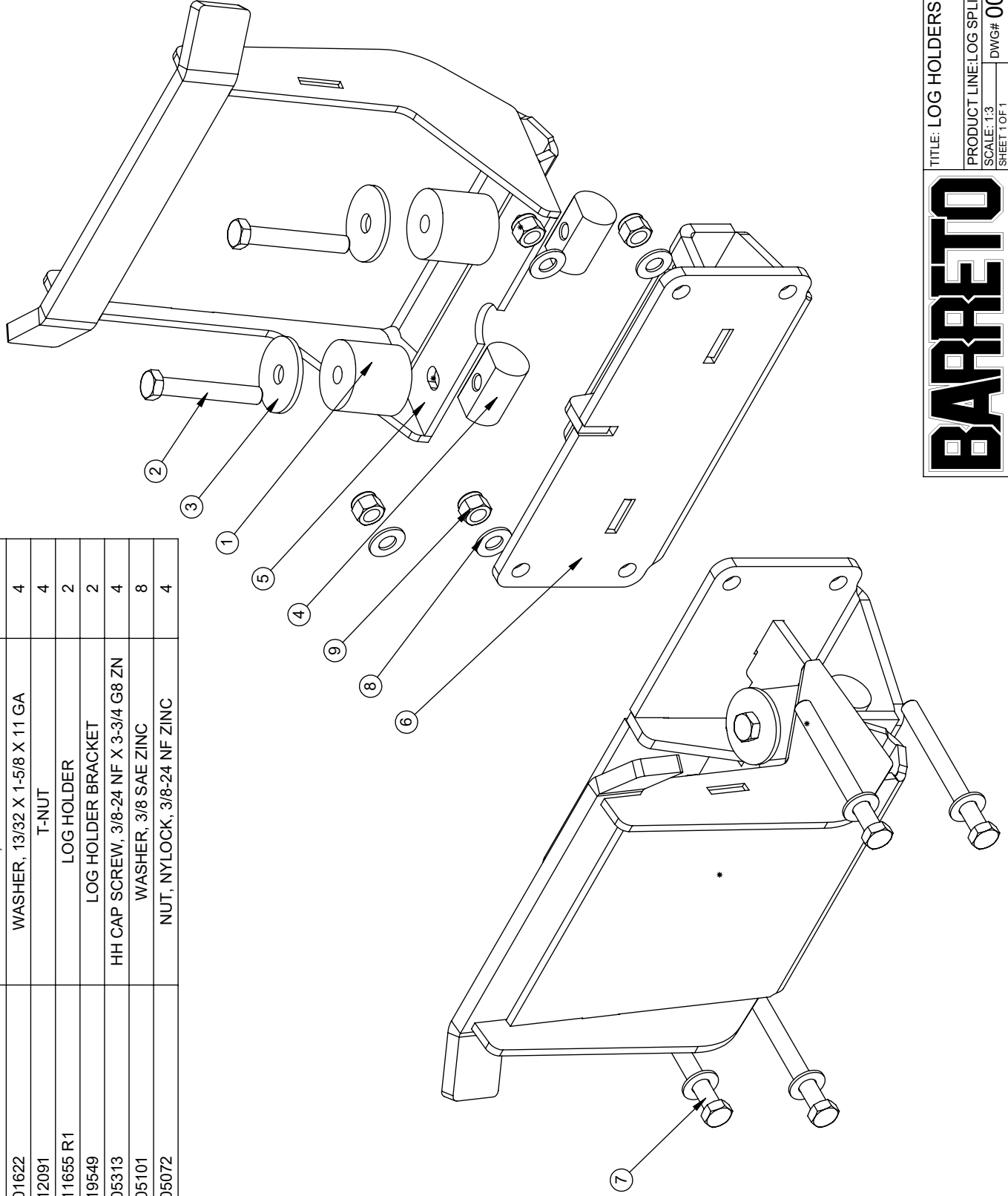
TITLE: LIGHTS (OPTIONAL)



PRODUCT LINE: 620, 920 & 922LS DATE: 6/3/08
 SCALE: 1:6 DWG#: 00371
 SHEET 1 OF 1

RELEASE DATE	11/22/2021
REVISED DATE	NEW
REVISION #	0

ITEM NO.	PART NUMBER	DESCRIPTION	QTY.
1	02615-A	NEOPRENE PAD	4
2	05249	HH CAP SCREW, 3/8-16 NC X 2-1/2 G5 ZINC	4
3	01622	WASHER, 13/32 X 1-5/8 X 11 GA	4
4	12091	T-NUT	4
5	11655 R1	LOG HOLDER	2
6	19549	LOG HOLDER BRACKET	2
7	05313	HH CAP SCREW, 3/8-24 NF X 3-3/4 G8 ZN	4
8	05101	WASHER, 3/8 SAE ZINC	8
9	05072	NUT, NYLOCK, 3/8-24 NF ZINC	4



TITLE: LOG HOLDERS

BARRETO

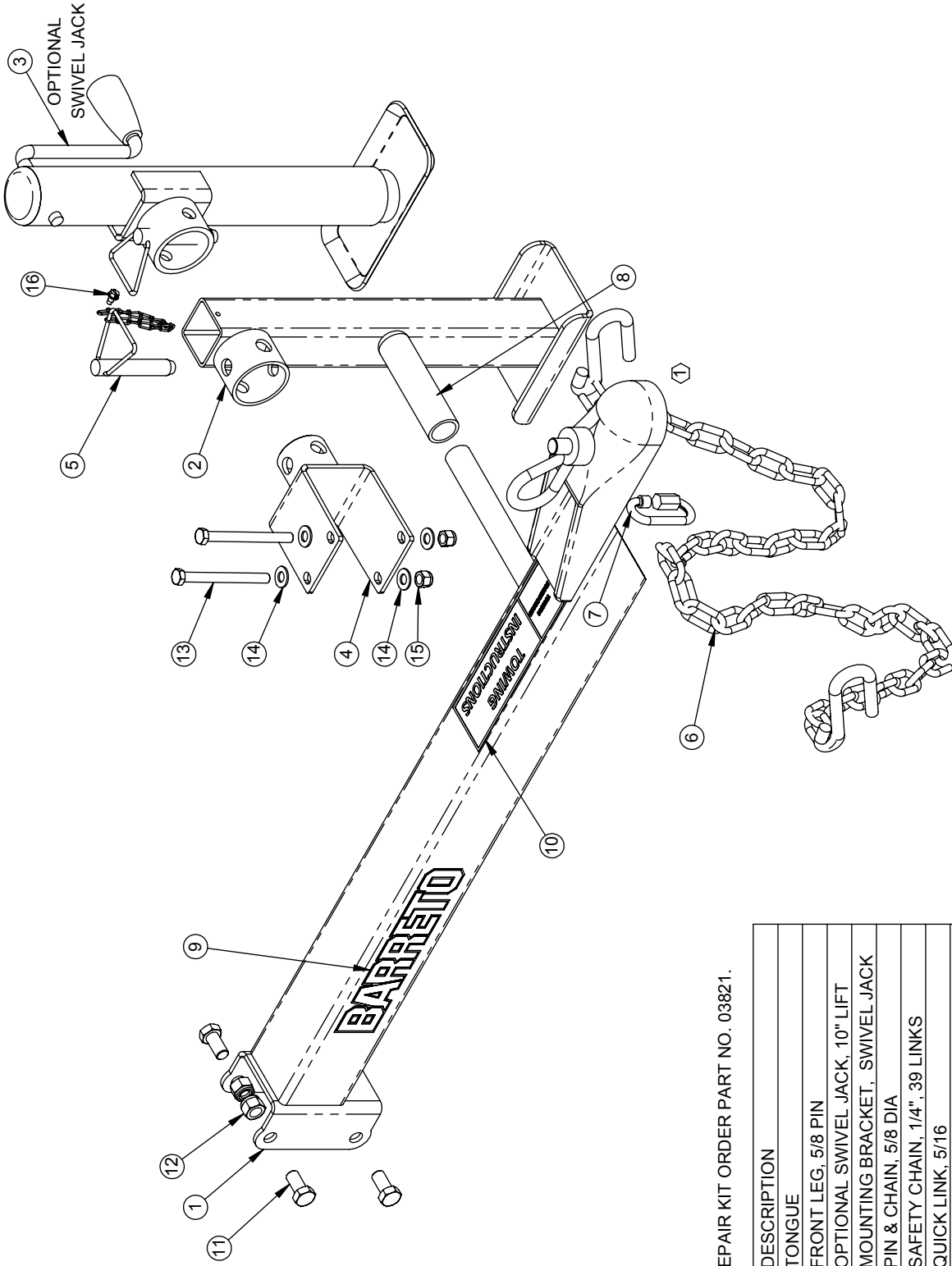
PRODUCT LINE: LOG SPLITTER

SCALE: 1:3

DWG# 00375 R4

SHEET 1 OF 1

UPDATE 4/12/17



① FOR COUPLER REPAIR KIT ORDER PART NO. 03821.

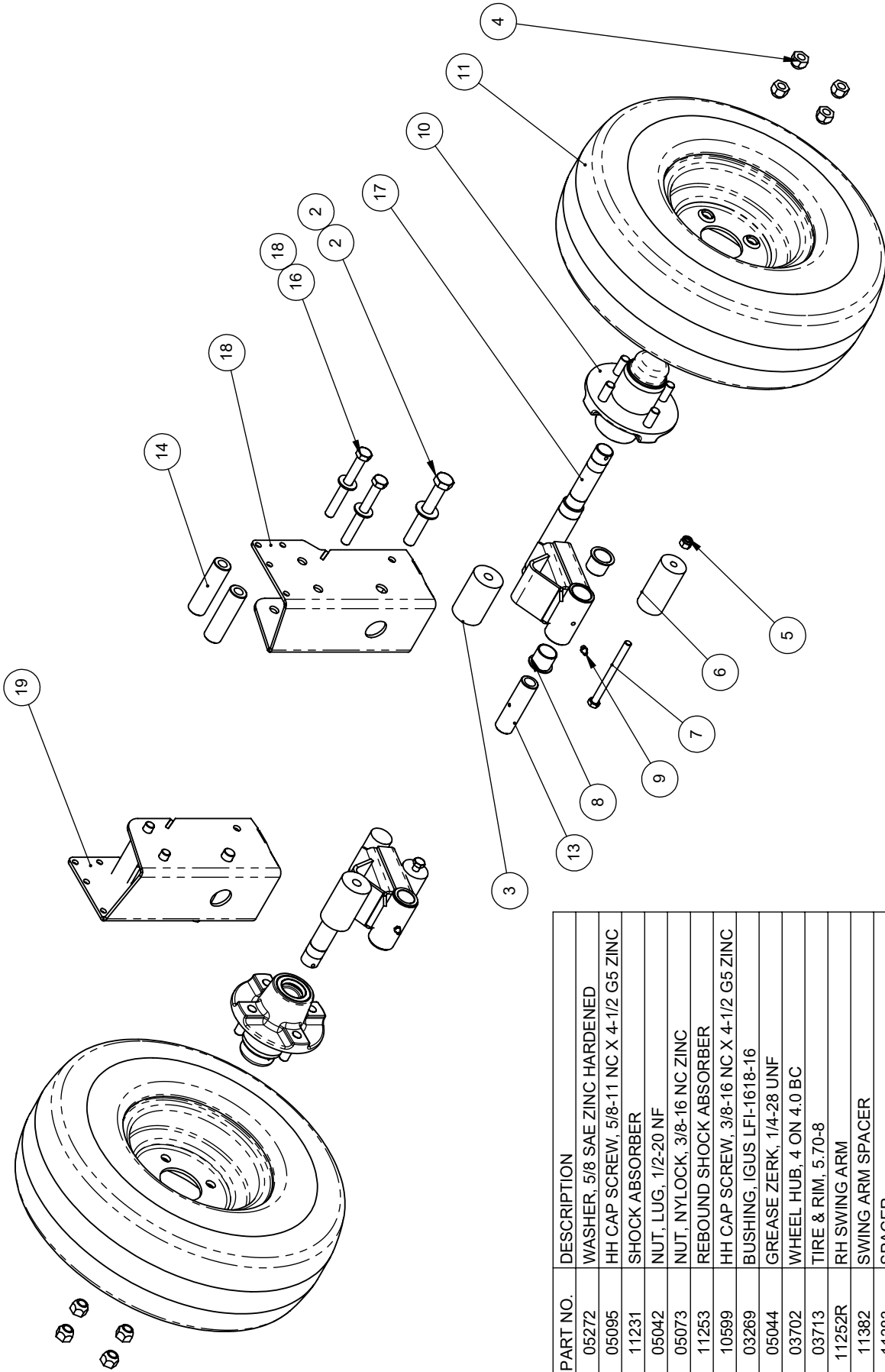
REF QTY.	PART NO.	DESCRIPTION
1	11960	TONGUE
2	11234	FRONT LEG, 5/8 PIN
3	08216	OPTIONAL SWIVEL JACK, 10" LIFT
4	10903-58	MOUNTING BRACKET, SWIVEL JACK
5	08233	PIN & CHAIN, 5/8 DIA
6	08301-1	SAFETY CHAIN, 1/4", 39 LINKS
7	03711	QUICK LINK, 5/16
8	03032-01	GRIP, 1 X 5 (P/N 03032 IS A PAIR)
9	03040-11	DECAL, "BARRETO", 2-3/16 X 7-3/8
10	04420-05	DECAL, TOWING INSTRUCTIONS
11	05067	HH CAP SCREW, 1/2-13 NC X 1 G5 ZINC
12	05098	NUT, NYLOCK, 1/2-13 NC ZINC
13	10757	HH CAP SCREW, 3/8-16 NC X 4 G5 ZINC
14	05101	WASHER, 3/8 SAE ZINC
15	05073	NUT, NYLOCK, 3/8-16 NC ZINC
16	05425	HHFS, SELF TAP #12-24 X 3/8" ZN

TITLE: TONGUE

PRODUCT LINE: 920LS & 922LS DATE: 8/24/09

SCALE: 1:6 DWG# 00378 R3

BARRETO



REF QTY.	PART NO.	DESCRIPTION
1	2	05272 WASHER, 5/8 SAE ZINC HARDENED
2	2	05095 HH CAP SCREW, 5/8-11 NC X 4-1/2 G5 ZINC
3	2	11231 SHOCK ABSORBER
4	8	05042 NUT, LUG, 1/2-20 NF
5	2	05073 NUT, NYLOCK, 3/8-16 NC ZINC
6	2	11253 REBOUND SHOCK ABSORBER
7	2	10599 HH CAP SCREW, 3/8-16 NC X 4-1/2 G5 ZINC
8	4	03269 BUSHING, IGUS LFI-1618-16
9	2	05044 GREASE ZERK, 1/4-28 UNF
10	2	03702 WHEEL HUB, 4 ON 4.0 BC
11	2	03713 TIRE & RIM, 5.70-8
12	1	11252R RH SWING ARM
13	2	11382 SWING ARM SPACER
14	4	11383 SPACER
15	4	05102 WASHER, 1/2 SAE ZINC HARDENED
16	4	05094 HH CAP SCREW, 1/2-13 NC X 4-1/2 G5 ZINC
17	1	11252L LH SWING ARM
18	1	11449L R1 SIDE BRACKET, LEFT
19	1	11449R R1 SIDE BRACKET, RIGHT

TITLE: SWING ARMS ASSEMBLY

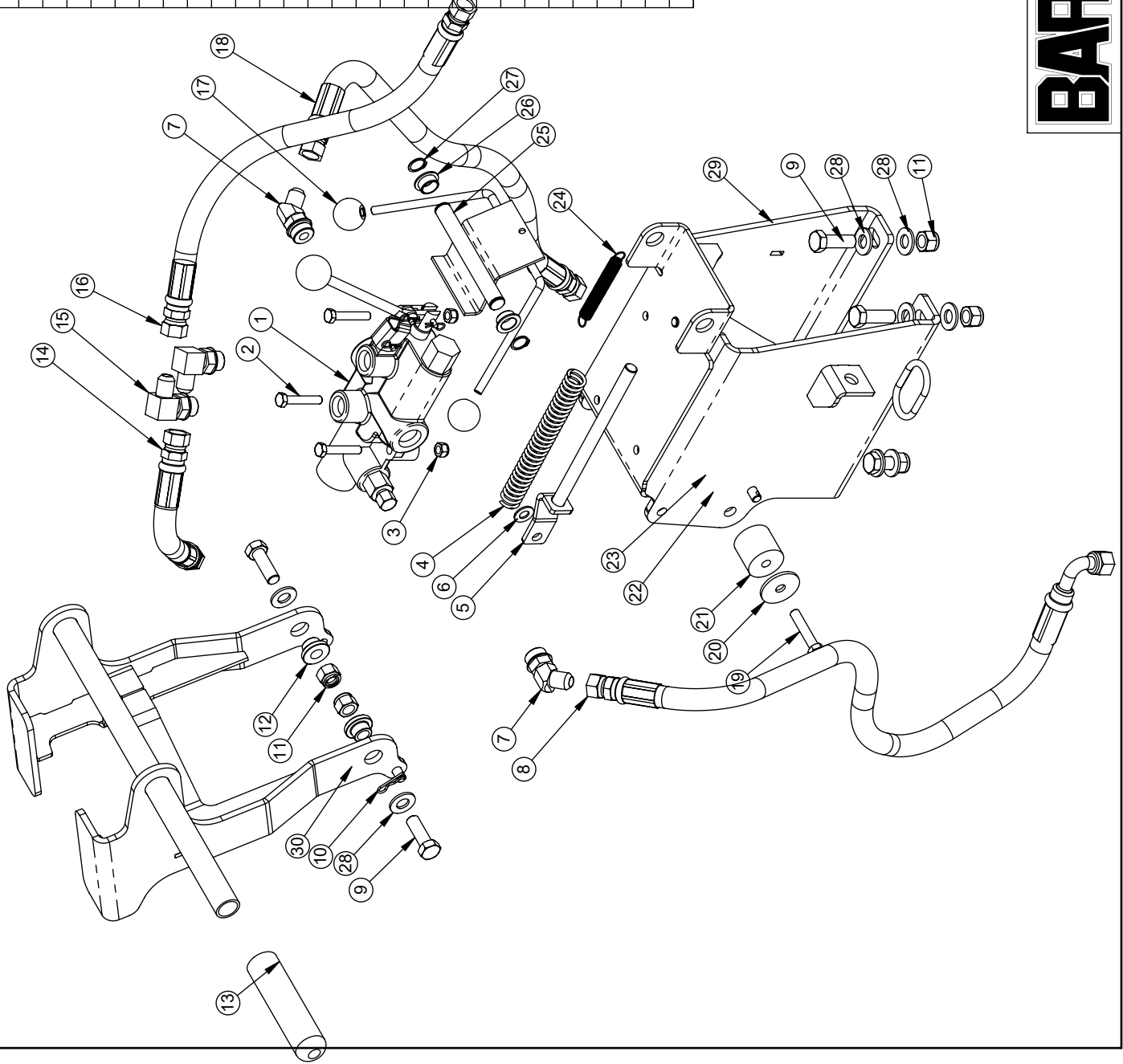
PRODUCT LINE: 620LSH DATE: 5-2018

SCALE: 1:8 DWG#: 00381 R2

SHEET 1 OF 1



REF	QTY.	PART NO.	DESCRIPTION
1	1	10948	VALVE, PRINCE LS-3060-7, #10 & #8 PORTS
2	3	05054	HH CAP SCREW, 5/16-18 NC X 1-3/4 G5 ZINC
3	3	05273	NUT, NYLOCK, 5/16-18 NC ZINC
4	1	11548	SPRING, CENTURY 12153
5	1	11551	SPRING GUIDE
6	1	05103	WASHER, 3/8 A325 HARDENED ZINC
7	2	04557	FITTING, 6802-8-10
8	1	11432	HOSE, PUMP TO CONTROL VALVE
9	6	05300-01	HH CAP SCREW, 1/2-13 NC X 1-1/2 G5 ZINC
10	1	03065	HAIR SPRING COTTER #4
11	6	05098	NUT, NYLOCK, 1/2-13 NC ZINC
12	2	11543	PIVOT PIN, WEDGE CLEANER
13	1	03032-01	GRIP, 1 X 5 (P/N 03032 IS A PAIR)
14	1	11434	HOSE, CONTROL VALVE/CYL RETRACT
15	2	04554	FITTING, 6801-8-8
16	1	11433	HOSE, CONTROL VALVE/CYL EXTEND
17	2	03026	KNOB, 5/16-NC
18	1	11435	HOSE, CONTROL VALVE TO FILTER
19	1	05262	HH CAP SCREW, 3/8-16 NC X 2 G5 ZINC
20	1	01622	WASHER, 13/32 X 1-5/8 X 11 GA
21	1	02615-A	NEOPRENE PAD
22	1	05101	WASHER, 3/8 SAE ZINC
23	1	05073	NUT, NYLOCK, 3/8-16 NC ZINC
24	1	03224	SPRING, LEE LE-045E-8 MW
25	1	11257	LOCKOUT LEVERS
26	2	03060	BUSHING, IGUS MFI-1012-06
27	2	10971	SNAP RING, SH-62 ST ZD
28	10	05102	WASHER, 1/2 SAE ZINC HARDENED
29	1	19531	VALVE MOUNT
30	1	19512	WEDGE CLEANER



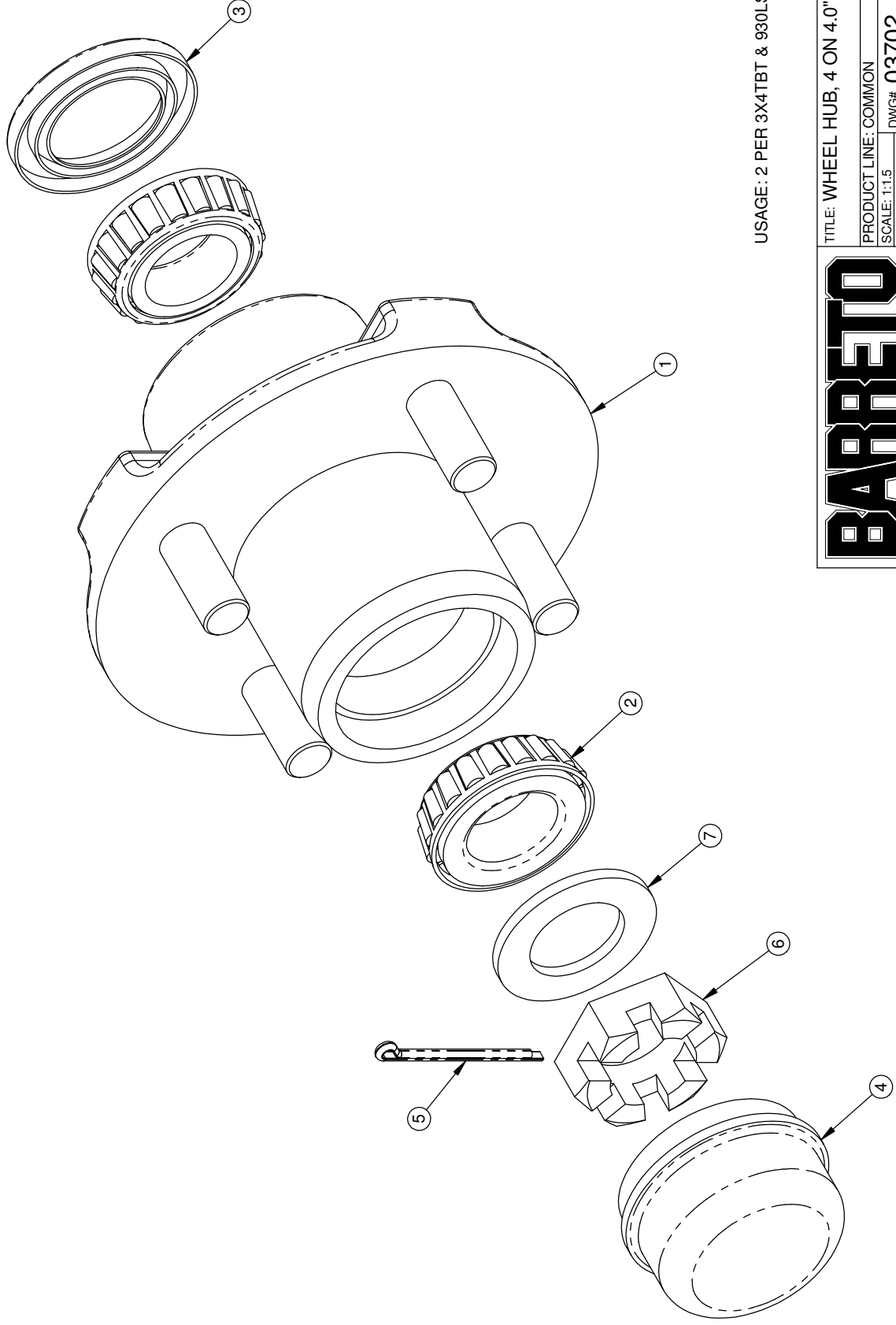
BARRETO

TITLE: CONTROL VALVE & MOUNT

PRODUCT LINE: 922LSH DATE: 11/04/19

SCALE: 1:6 DWG# 00460 R2
SHEET 1 OF 1

REF. QTY.	PART NO.	DESCRIPTION
1	03702-01	HUB - ORDER COMPLETE WHEEL HUB 03702
2	03702-02	BEARING L44643
3	03702-03	SEAL, 34823
4	03804-04	GREASE CAP
5	03804-05	COTTER PIN 1/8 X 1-3/4
6	03804-06	NUT, 1-12 UNF CASTLE
7	03804-07	WASHER, 1 X 1-3/4 X 1/8 ZINC



USAGE: 2 PER 3X4TBT & 930LS.

BARRETO

TITLE: WHEEL HUB, 4 ON 4.0" BC

PRODUCT LINE: COMMON DATE: 2/11/09

SCALE: 1:1.5

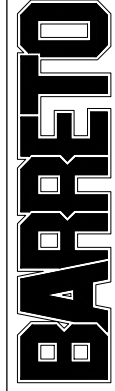
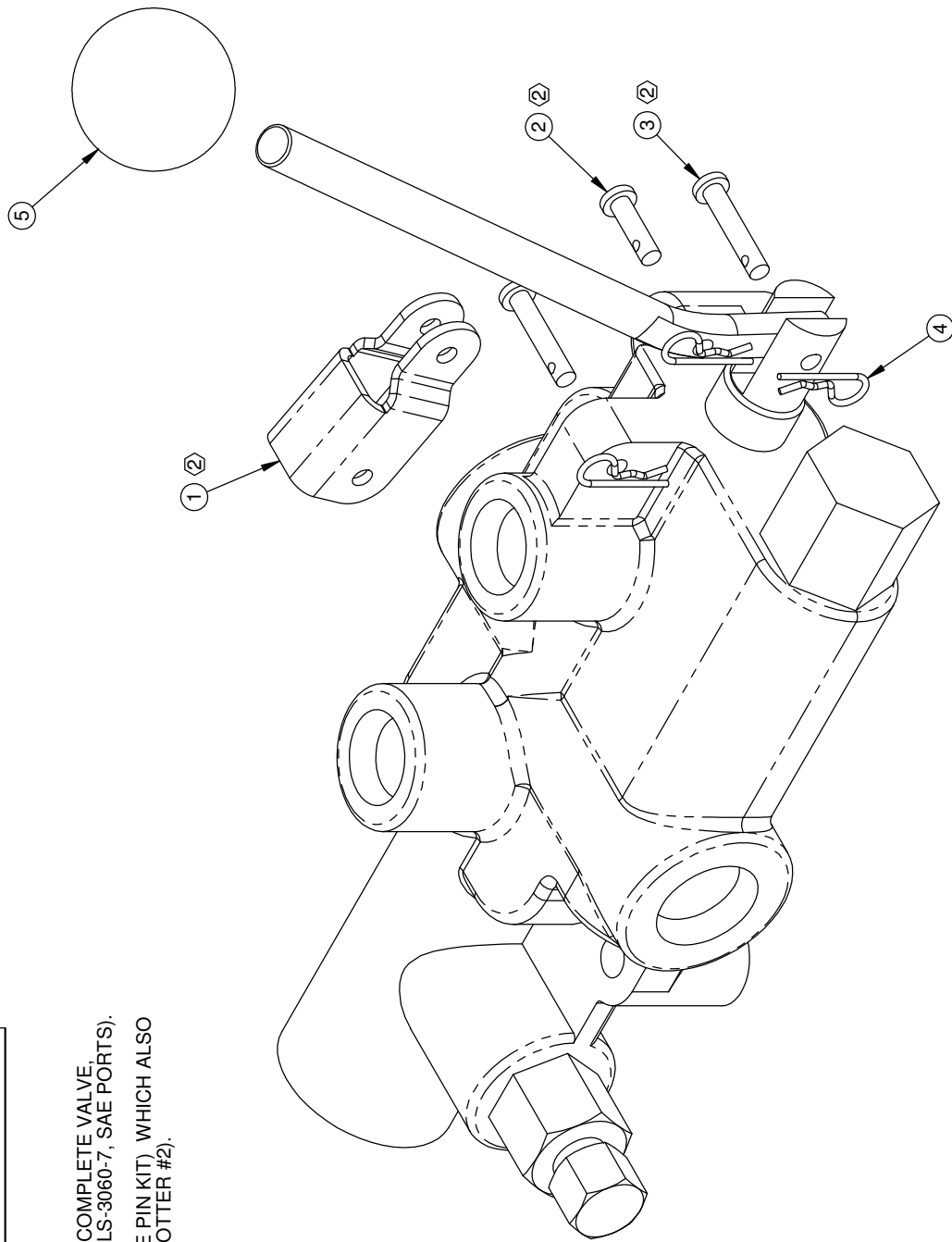
DWG# 03702

SHEET 1 OF 1

REF. QTY.	PART NO.	DESCRIPTION
1	03509-04	BRACKET (ORDER 03509)
2	03509-01	CLEVIS PIN, 3/16 X 7/16 (ORDER 03509)
3	03509-02	CLEVIS PIN, 3/16 X 3/4 (ORDER 03509)
4	05310	HAIR SPRING COTTER #2
5	03507	KNOB, 3/8-NC

NOTES:

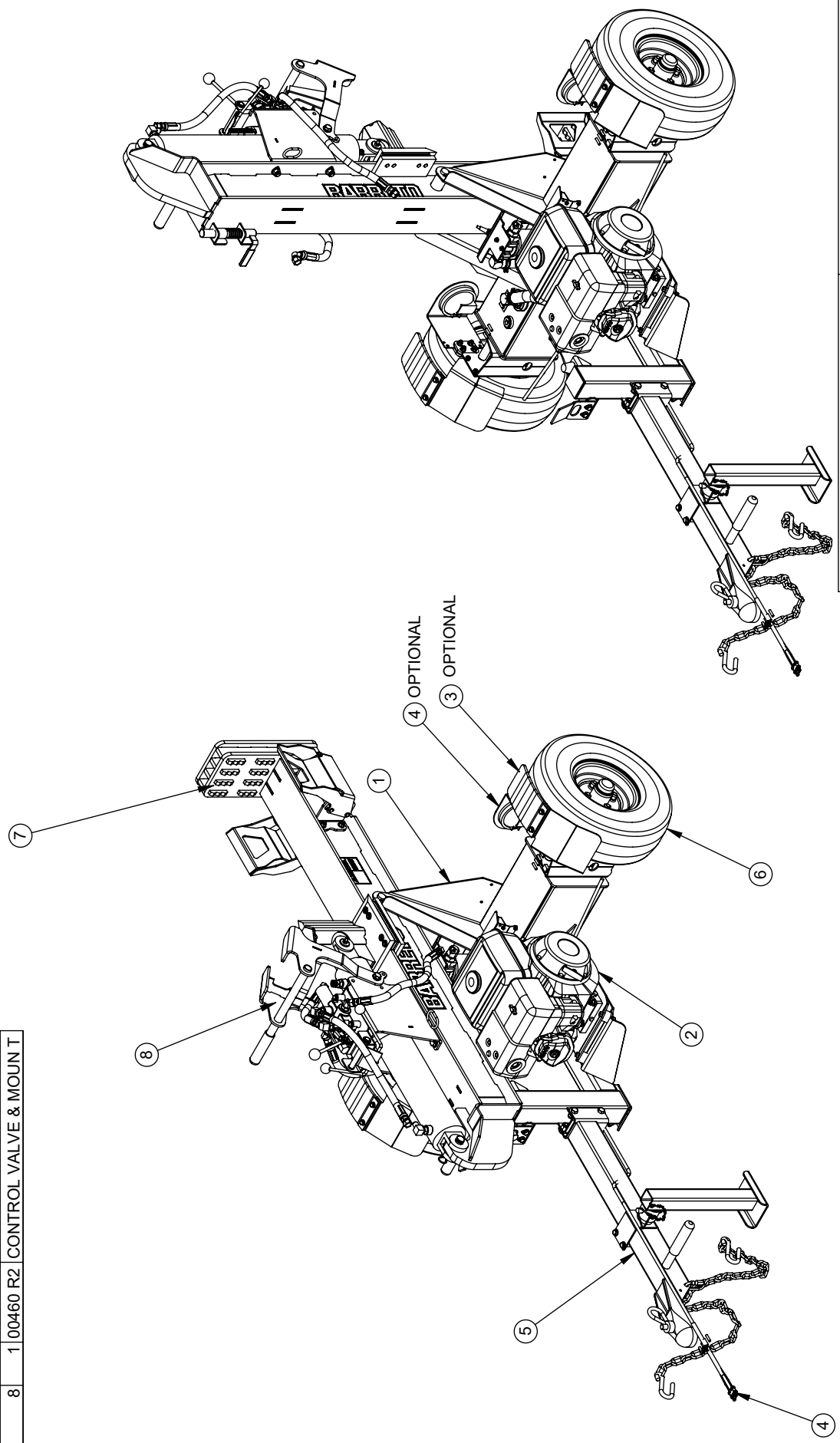
1. ALL ITEMS SHOWN COME WITH THE COMPLETE VALVE. PART NUMBER 10948 (VALVE, PRINCE LS-3060-7, SAE PORTS).
- ② ORDER PART NUMBER 03509 (VALVE PIN KIT) WHICH ALSO INCLUDES 3 OF 05310 (HAIR SPRING COTTER #2).
3. Valve handle only is pn 10948-01
4. Seal kit is pn 10948-SK



RELEASE DATE	9/27/16
REVISED DATE	01/15/2020
REVISION #	0

1 20 TON SPLITTER USES 00343 R5
 22 TON SPLITTER USES 00343-4.5 R2

ITEM NO.	QTY.	PART NO.	DESCRIPTION
1	1	00341 R5	FRAME, SWING ARMS
2	1	00342-9	ENGINE & PUMP, 9 HP
3	1	00347	FENDERS (OPTIONAL)
4	1	00371	LIGHTS (OPTIONAL)
5	1	00378 R3	TONGUE
6	1	00381 R2	SPLIT SWING AXLE
7	1	00343 R5	RAIL, 4" CYLINDER
8	1	00460 R2	CONTROL VALVE & MOUNT T



BARRETO

TITLE: LOG SPLITTER

PRODUCT LINE: 920 & 922LS

SCALE: 1:18

SHEET 1 OF 1

DWG# E920LS