

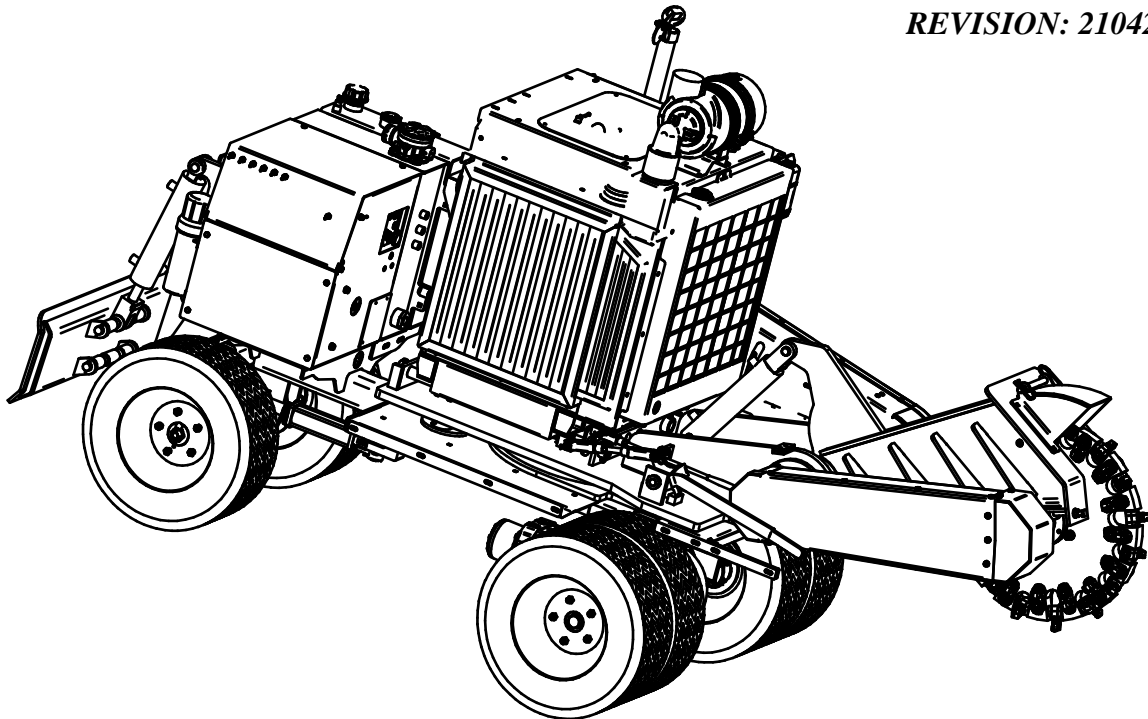


SP7015 4WD

74 HP KUBOTA DIESEL ENGINE

74 HP KOHLER DIESEL ENGINE

REVISION: 210429-1

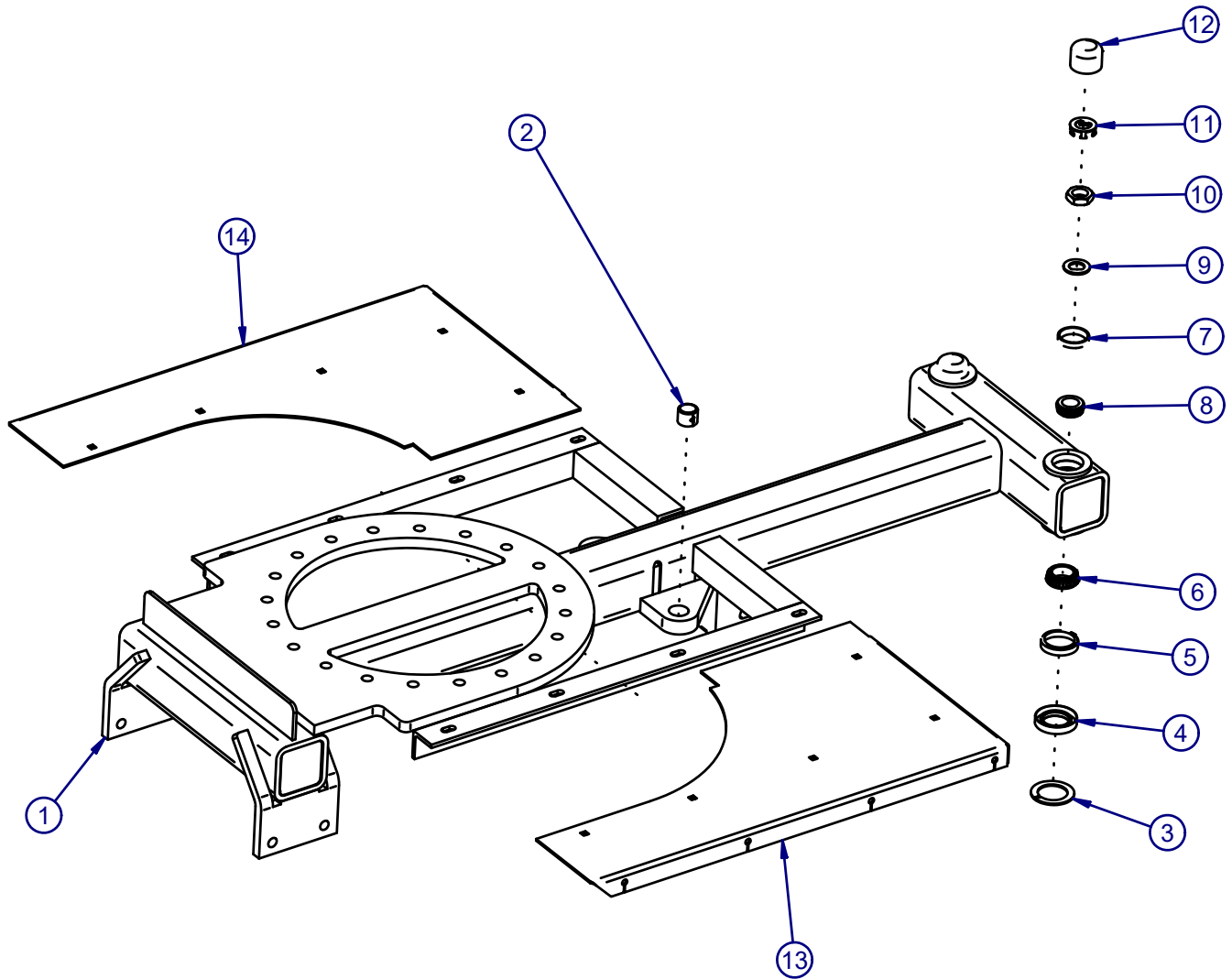


J.P Carlton Company
Div. D.A.F. Inc.

121 John Dodd Road
Spartanburg, SC 29303

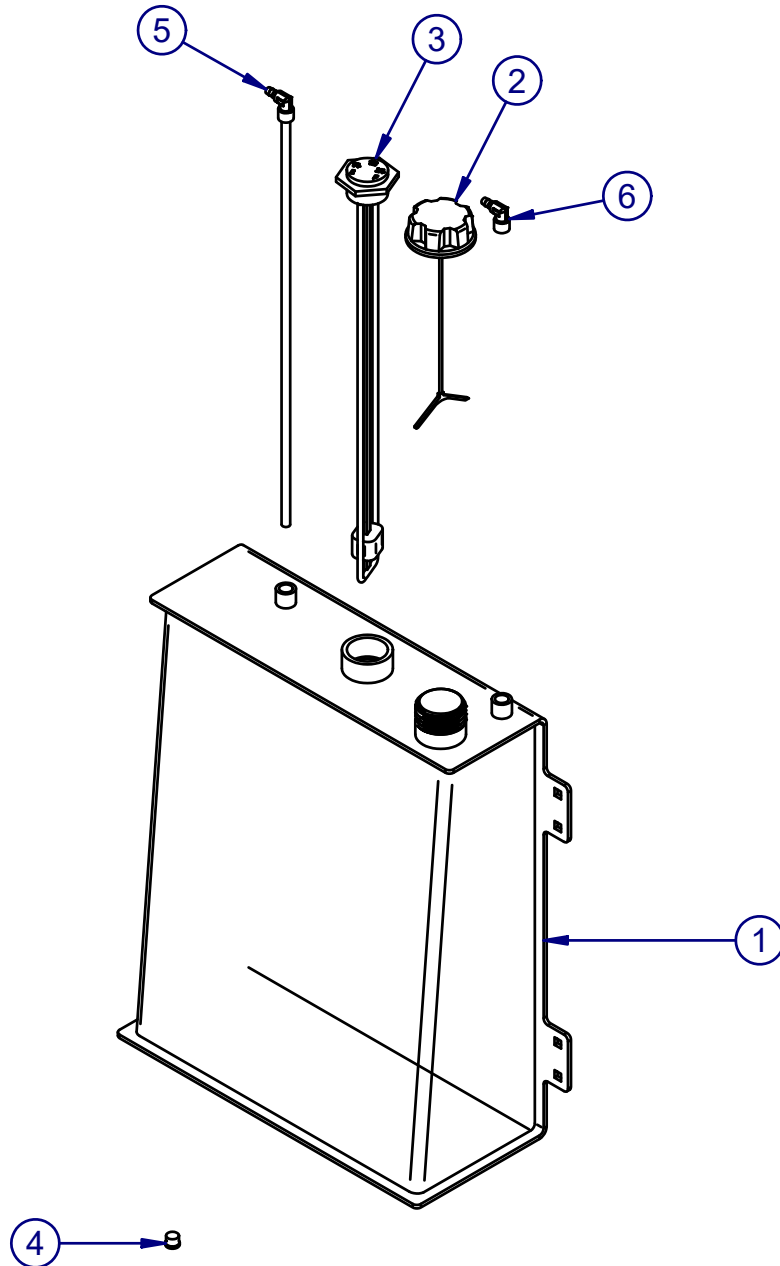
Ph: (864) 578-9335
Fax: (864) 578-0210

www.stumpcutters.com



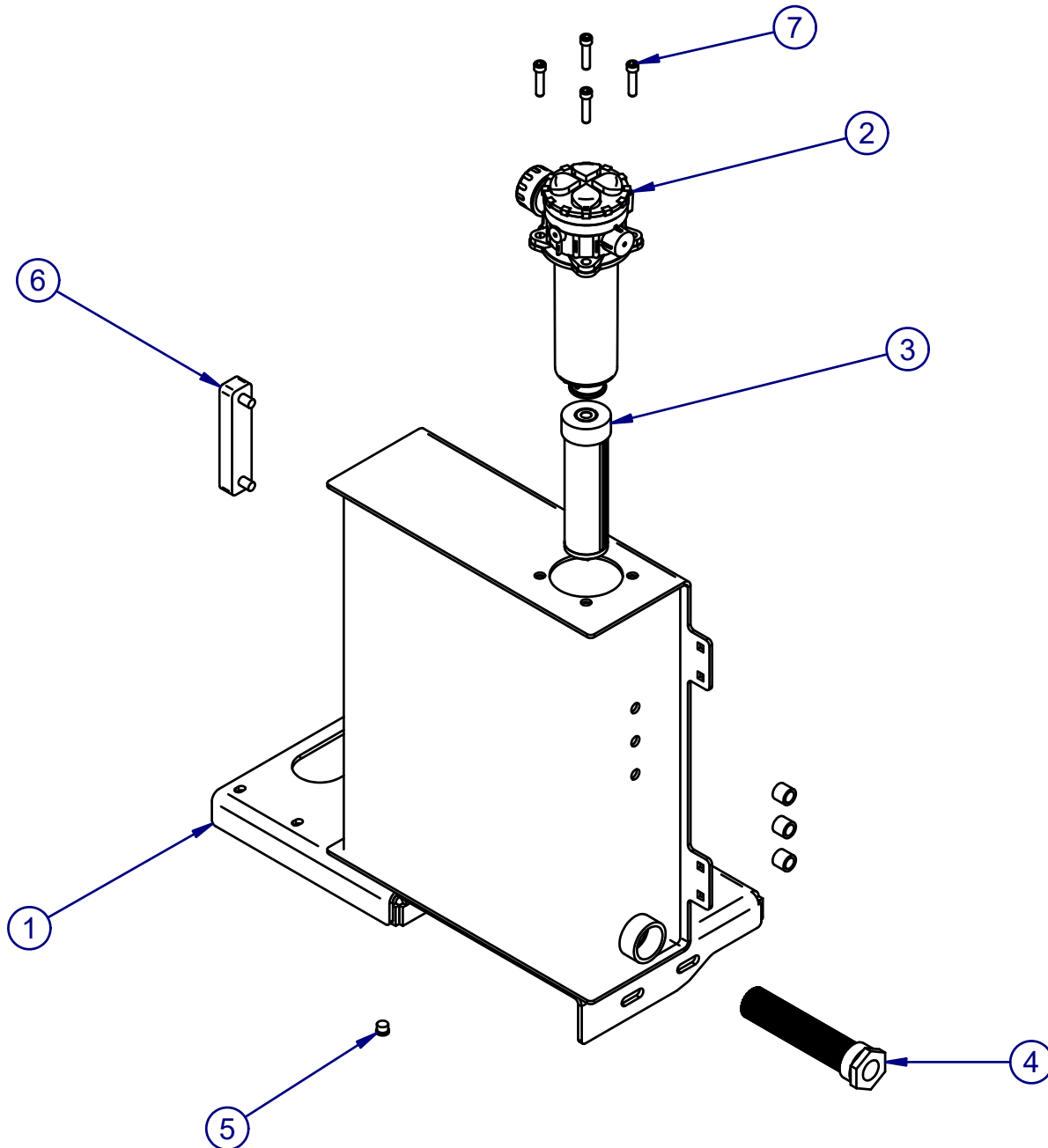
ITEM	PART	DESCRIPTION	QTY	ITEM	PART	DESCRIPTION	QTY
1	17010015-2	WELDMENT,FRAME,4WD/2WD	1	8	0550214	OUTER BEARING - 3500#	2
2	0150801	BUSHING,HARDENED,1"	2	9	0550215	SPINDLE "D" WASHER	2
3	14060044-1	PLATE,STEERING INNER BEARING SEAL	2	10	0550216	SPINDLE NUT - 1"-14	2
4	0550208	E-Z LUBE GREASE SEAL	2	11	0550217	TANG WASHER	2
5	0550210	INNER BEARING RACE - 3500#	2	12	0550109	GREASE CAP - 3500# 2"	2
6	0550209	INNER BEARING - 3500#	2	13	17030065-4	PLATE,CHIP DECK,LH,4WD/2WD	1
7	0550213	OUTER BEARING RACE - 3500#	2	14	17030066-4	PLATE,CHIP DECK,RH,4WD/2WD	1

NOTE: DUE TO CONTINUOUS DESIGN IMPROVEMENTS CONSULT FACTORY PRIOR TO ORDERING 1-800-243-9335.



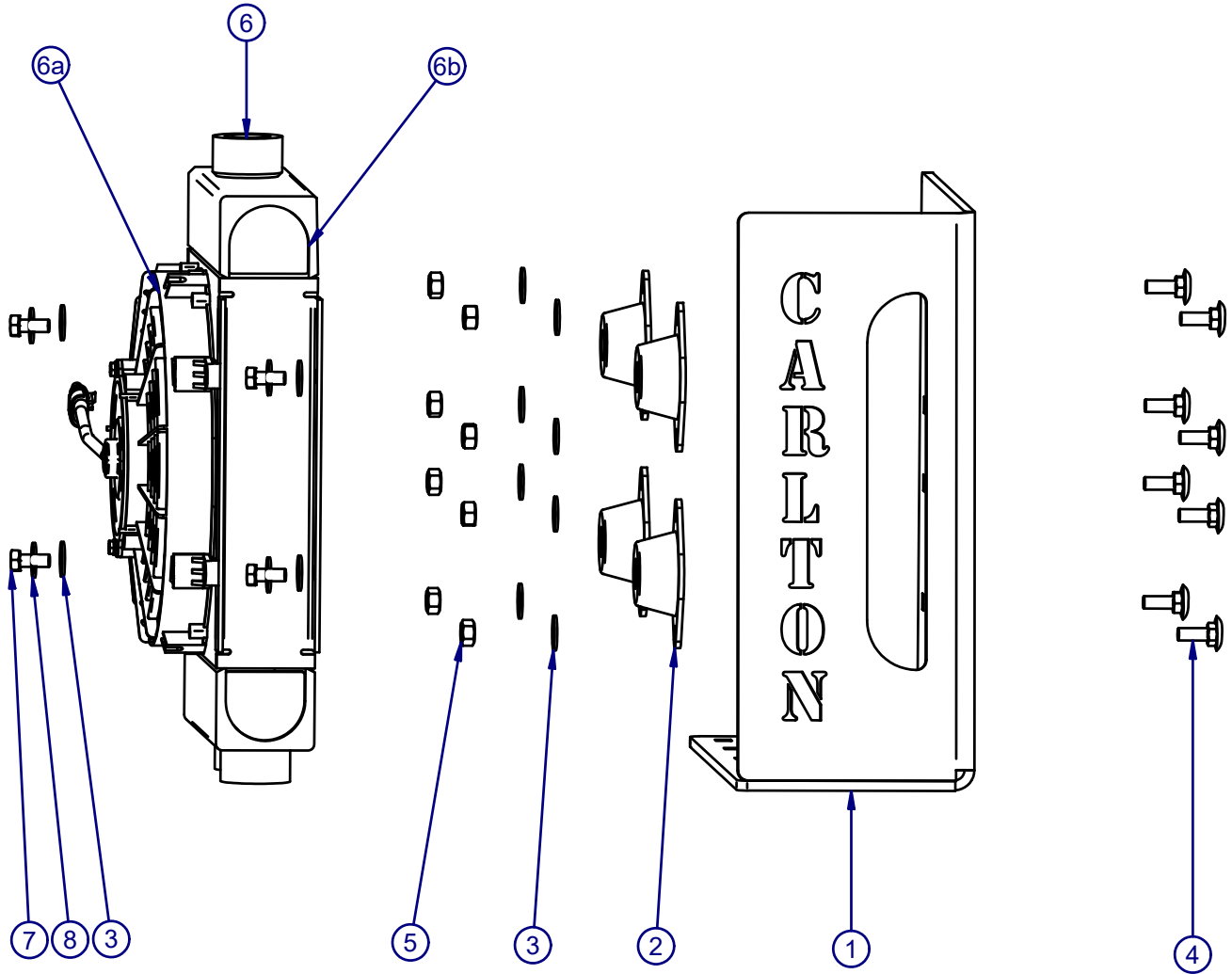
ITEM	PART	DESCRIPTION	QTY
1	17010005-6	WELDMENT,FUEL TANK, 7015	1
2	0201001A	FUEL CAP, DIESEL, VENTED, GREEN	1
3	0200210	GAUGE, SPIRAL FUEL, 21"	1
4	0150638	SAE MAGNETIC PLUG, 7/16-20	1
5	14010036-1	WELDMENT, PICK-UP TUBE	1
6	0300253	3/8MP-5/16BARB - 4290-5-6	1

NOTE: DUE TO CONTINUOUS DESIGN IMPROVEMENTS CONSULT FACTORY PRIOR TO ORDERING 1-800-243-9335.



ITEM	PART	DESCRIPTION	QTY
1	17010150-1	WELDMENT, TO PLATE, HYD TANK, 7015	1
2	0300135I	HYDRAILIC INTANK FILTER MP	1
3	0300135J	HYDRAILIC IN TANK FILTER ELEMENT	1
4	0300169	STRAINER- TANK MOUNTED LTM-15	1
5	0150638	SAE MAGNETIC PLUG,7/16-20	1
6	0300266A	HYDRAULIC SITE GAUGE W/TEMP	1
7	12D-0612	SHCS 3/8 X 1-1/2 NC GR 8	4

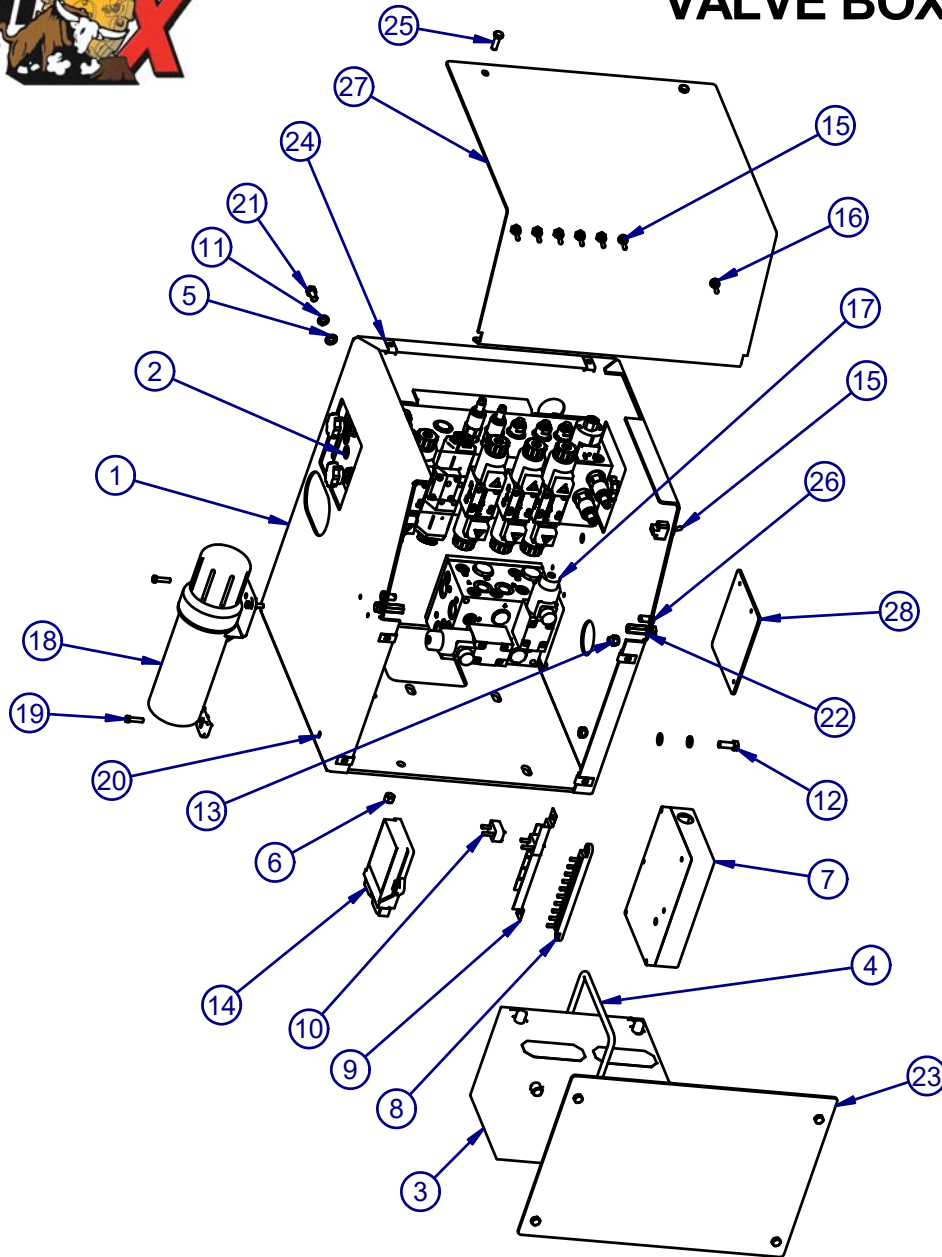
NOTE: DUE TO CONTINUOUS DESIGN IMPROVEMENTS CONSULT FACTORY PRIOR TO ORDERING 1-800-243-9335.



ITEM	PART	DESCRIPTION	QTY
1	17010151-1	PLATE, COOLER MOUNT	1
2	0300164	MOUNT-HYDRAULIC COOLER	4
3	31A-06	FLAT WASHER, 3/8 SAE	12
4	10G-0608	CARRIAGE BOLT, 3/8-16 X 1 GR 8	8
5	29A-06Z1	NUT,STOVER LOCK,3/8-16 GR 8 Z&Y	8
6	0300165BR1	HYDRAULIC COOLER ASSEMBLY- AKG	1
6a	0300165BR2	FAN ASSEMBLY- AKG	1
6b	0300165BR3	CORE ASSEMBLY- AKG	1
7	10A-0608	HEX C/S 3/8-16 X 1 GR 8	4
8	30A-06	LOCK WASHER, 3/8	4

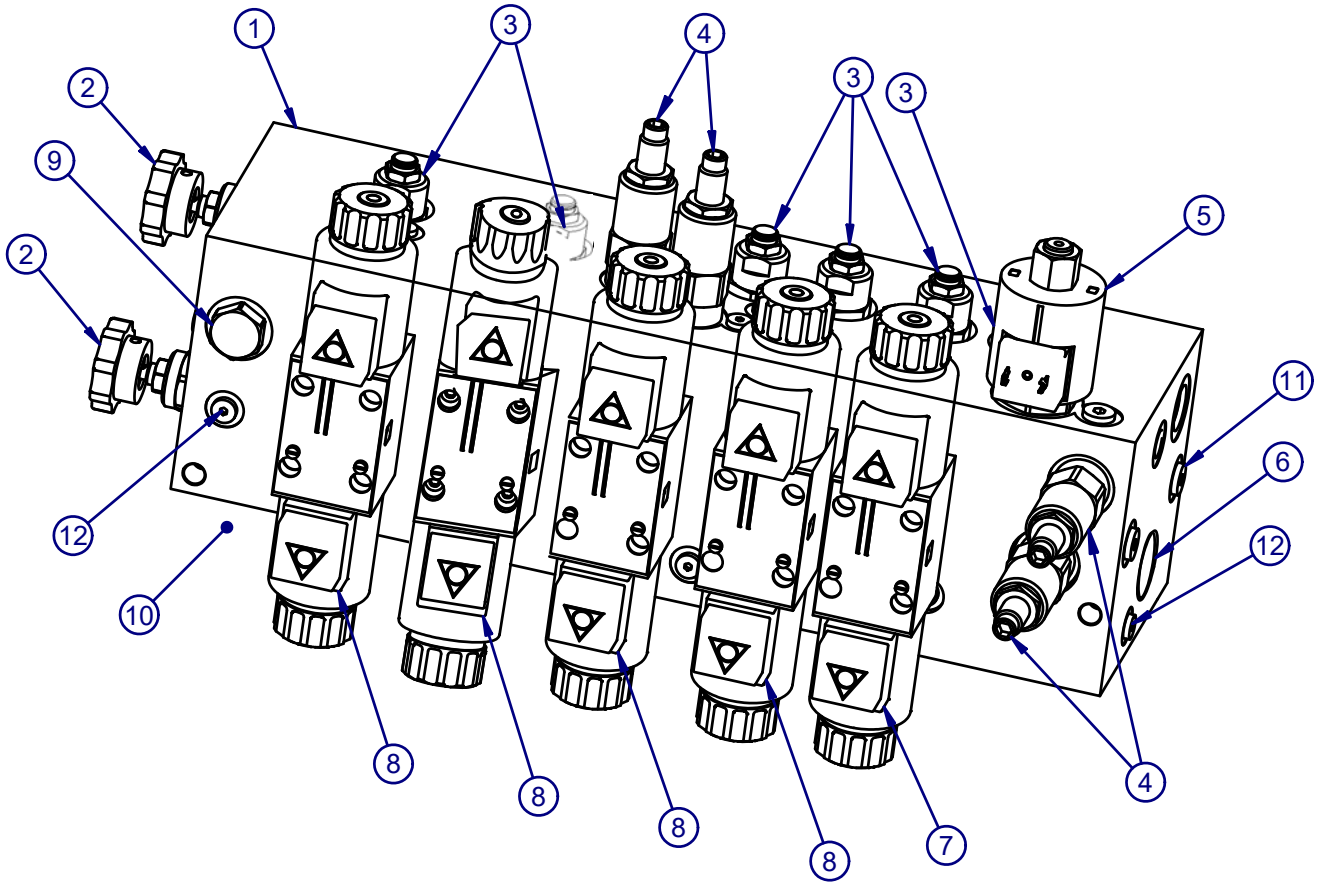
NOTE: DUE TO CONTINUOUS DESIGN IMPROVEMENTS CONSULT FACTORY PRIOR TO ORDERING 1-800-243-9335.

VALVE BOX ASSEMBLY



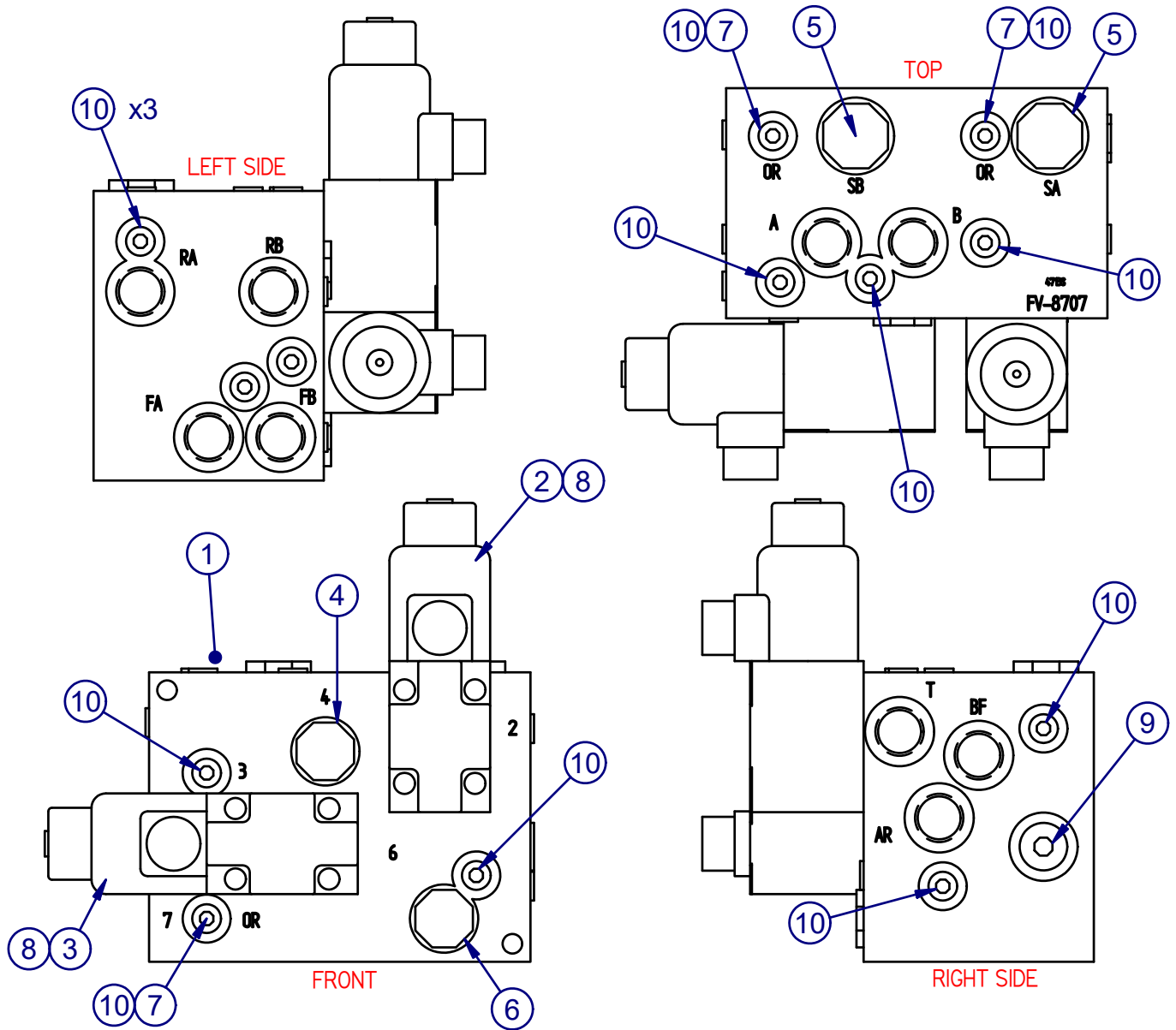
ITEM	PART	DESCRIPTION	QTY	ITEM	PART	DESCRIPTION	QTY
1	I7020136-3	WELDMENT, VALVE BOX, ANGLED LID	1	15	0350011B	SWITCH - MOMENTARY INTI-7	7
2		HYDRAULIC MANIFOLD ASSEMBLY	1	16	0350011A	SWITCH-INTI-2	1
3	0350032A_2	BATTERY, 12V/950 CCA	1	17	PRO17	SP7015 4WD HYD BLOCK	1
4	0150508	BATTERY BRACKET - 3/8X7X8.25	1	18	040060	MANUAL CANISTER, MACHINE MOUNTED	1
5	31B-06ZI	FLAT WASHER 3/8 USS GR 8 Z&Y	10	19	I2A-0408	HEX C/S 1/4-20 X 1 UNC GR 8	3
6	24D-06	NUT, ELASTIC STOP, 3/8-16 UNC GR8	2	20	20A-04ZI	NUT, HEX, 1/4-20 UNC GR 5 ZINC	3
7	0350029C	JUNCTION BOX 4-WHEELER I325-DG	1	21	I2A-0606ZI	HEX C/S 3/8-16 X 3/4" UNC GR 8 ZINC	4
8	0350084	TERMINAL BLOCK - 70004	1	22	28A-0510ZI	NUT, HEX COUPLING, 5/16-18 X 1-1/4" LONG UNC Z&Y GR8	2
9	0350087E	CIRCUIT BREAKER BRACKET -72065	1	23	I7020133-2	PLATE, COVER, BOTTOM, ANGLED LID	1
10	0350087B	CIRCUIT BREAKER - 20 AMP 72325	2	24	0150715	5/16 TINNEMAN U NUT RETAINER	6
11	30A-06	LOCKWASHER, 3/8" USS GR8	8	25	I2A-0508ZI	HEX C/S 5/16-18 X 1 UNC GR 5 Z&Y	6
12	I2A-0608ZI	HEX C/S 3/8-16 X 1" UNC GR 8 ZINC	4	26	51E-0606	PIN, CLEVIS, 3/8"X3/4"	2
13	29A-06	NUT, STOVER LOCK, 3/8-16 UNC GR8	2	27	I7020139-3	PLATE, LID, WHEEL, ANGLED	1
14	0350006AI	OMNEX SP4012 RECEIVER- 2.4	1	28	I7020099-1	PLATE, VALVE BOX, 4WD COVER PLATE	1

NOTE: DUE TO CONTINUOUS DESIGN IMPROVEMENTS CONSULT FACTORY PRIOR TO ORDERING 1-800-243-9335.



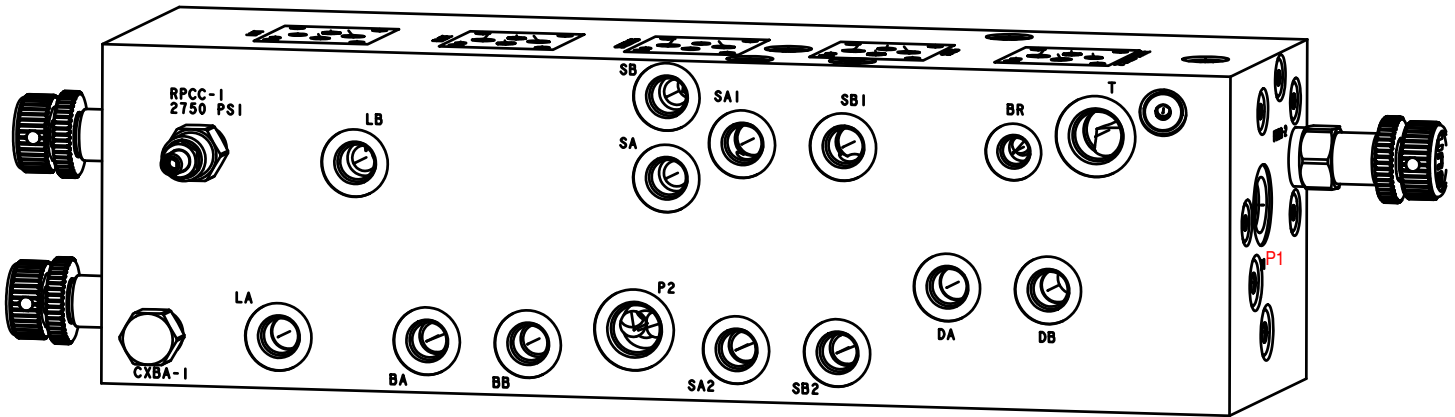
ITEM	PART	DESCRIPTION	QTY
1		BLOCK, 6061-T6 ALUMINUM	1
2		FLOW CONTROL VALVE	2
3		COUNTERBALANCE VALVE	6
4		RELIEF VALVE	4
5		SOLENOID DIR VALVE, FLOW	1
6		FLOW DIVIDER VALVE	3
7		SOLENOID VALVE, DRIVE	1
8		SOLENOID VALVE, FUNCTIONS	4
9		CHECK VALVE	1
10		PLUG, HEX, O-RING BOSS, SAE 6	1
11		PLUG, HEX, O-RING BOSS, SAE 4	4
12		PLUG, HEX, O-RING BOSS, SAE 2	17

NOTE: DUE TO CONTINUOUS DESIGN IMPROVEMENTS CONSULT FACTORY PRIOR TO ORDERING 1-800-243-9335.



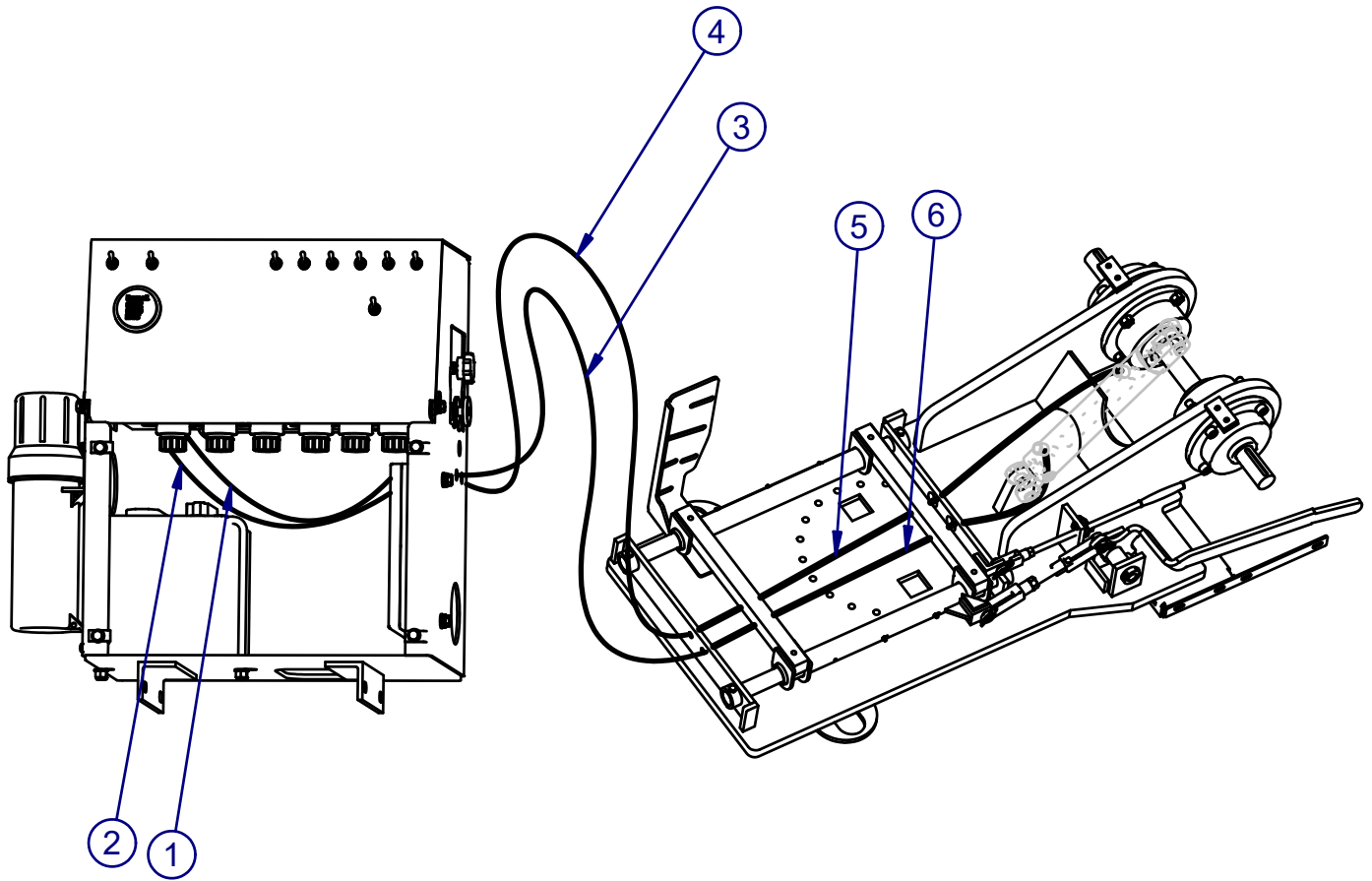
ITEM	PART	DESCRIPTION	QTY
1		VALVE BODY	1
2		SOLENOID DIR VALVE, 2pos 4way, 12v Din	1
3		SOLENOID DIR VALVE, 2pos 4way, 12v Din	1
4		FLOW DIVIDER VALVE, 40/60 split	1
5		CHECK VALVE, 5 PSI Spring	2
6		FLOW DIVIDER VALVE, 50/50, 6 gpm inlet	1
7		ORIFICE PLUG, 1/16-27 npt (.030)	3
8		SOCKET HEAD CAP SCREW	8
9		PLUG, SAE-8	1
10		PLUG, SAE-4	13

NOTE: DUE TO CONTINUOUS DESIGN IMPROVEMENTS CONSULT FACTORY PRIOR TO ORDERING 1-800-243-9335.



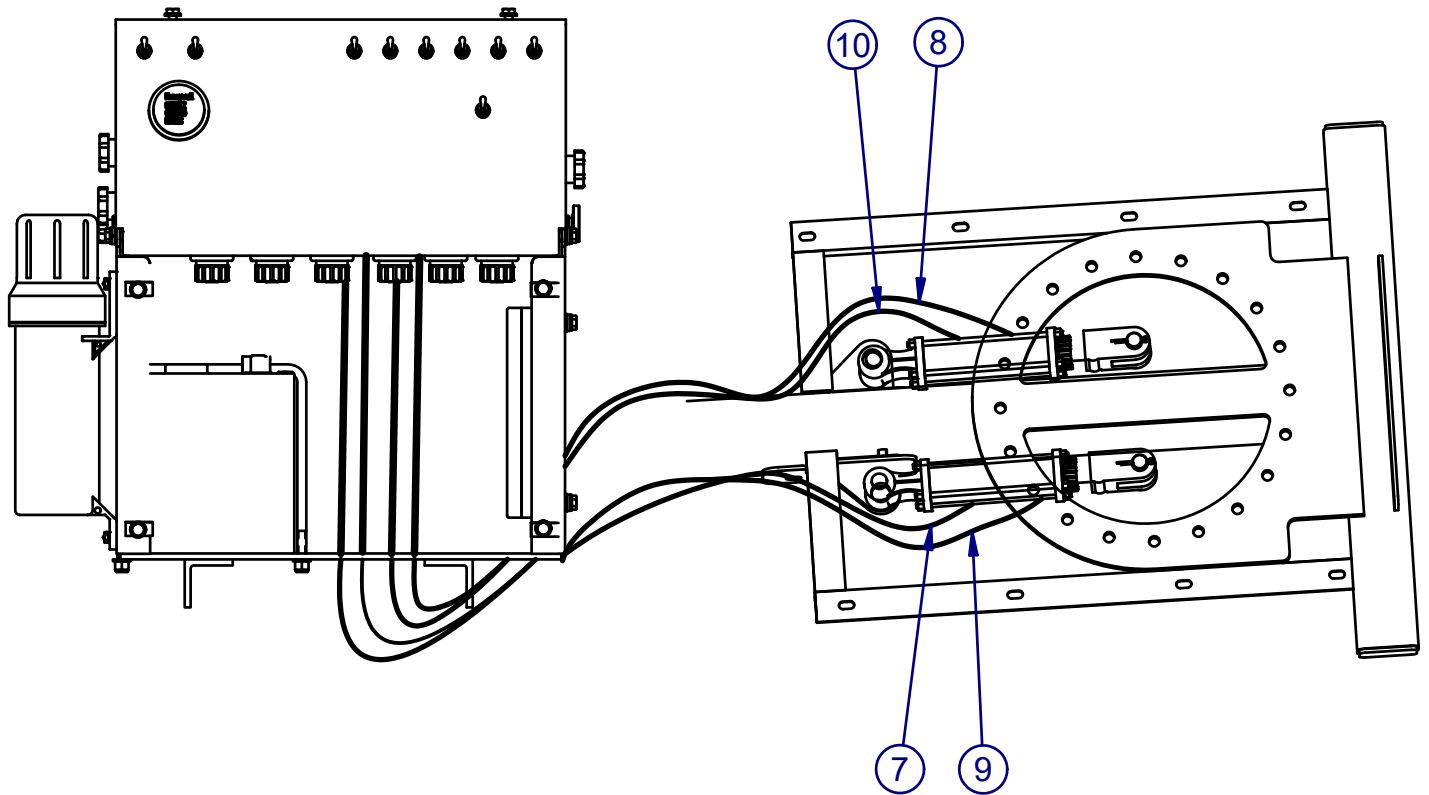
SP7015 WHEEL HOSE KIT							
Item	Part No.	HOSE	APPLICATION			Overall Length (in.)	Comments
		Size (in.)	From	To	Media		
1	7015W-01	1/4	Valve (LA)	Cntrl Box Bulkhead (Tank Side)	HYDRAULIC	20	Lift Cylinder
2	7015W-02	1/4	Valve (LB)	Cntrl Box Bulkhead (Valve Side)	HYDRAULIC	20	Lift Cylinder
3	7015W-03	1/4	Cntrl Box Bulkhead (LB)	Machine Bulkhead (Valve Side)	HYDRAULIC	38	Lift Cylinder
4	7015W-04	1/4	Cntrl Box Bulkhead (LA)	Machine Bulkhead (Tank Side)	HYDRAULIC	38	Lift Cylinder
5	7015W-05	1/4	Machine Bulkhead (LA)	Lift Cylinder Rod End	HYDRAULIC	53	Lift Cylinder
6	7015W-06	1/4	Machine Bulkhead (LB)	Lift Cylinder Back End	HYDRAULIC	39	Lift Cylinder
7	7015W-07	1/4	Valve (SA1)	Swing Cylinder Back End (Valve Side)	HYDRAULIC	46	Swing Cylinder
8	7015W-08	1/4	Valve (SA2)	Swing Cylinder Rod End (Tank Side)	HYDRAULIC	56	Swing Cylinder
9	7015W-09	1/4	Valve (SB1)	Swing Cylinder Rod End (Valve Side)	HYDRAULIC	52	Swing Cylinder
10	7015W-10	1/4	Valve (SB2)	Swing Cylinder Back End (Tank Side)	HYDRAULIC	50	Swing Cylinder
11	7015W-11	1/4	Valve (BA)	Blade Cylinder Rod End	HYDRAULIC	34	Blade Cylinder
12	7015W-12	1/4	Valve (BB)	Blade Cylinder Back End	HYDRAULIC	28	Blade Cylinder
13	7015W-13	1/4	4WD Block (T)	Hydra Tank Fitting	HYDRAULIC	12	Tank Return-4WD Manifold
14	7015W-14	1/4	4WD Block (FB)	Drive Motor Btm Fitting (Valve Side)	HYDRAULIC	23	4WD Drive Motor
15	7015W-15	1/4	4WD Block (RB)	Drive Motor Top Fitting (Valve Side)	HYDRAULIC	23	4WD Drive Motor
16	7015W-16	1/4	4WD Block (FA)	Drive Motor Top Fitting (Tank Side)	HYDRAULIC	25	4WD Drive Motor
17	7015W-17	1/4	4WD Block (RA)	Drive Motor Btm Fitting (Tank Side)	HYDRAULIC	28	4WD Drive Motor
18	7015W-23	3/8	4WD Block (AR)	Axle Drive Motor Btm Fitting	HYDRAULIC	34	Axle Drive Motor
19	7015W-24	3/8	4WD Block (BF)	Axle Drive Motor Top Fitting	HYDRAULIC	35	Axle Drive Motor
20	7015W-18	1/4	Valve (BR)	Brake Port/Axle Drive Motor	HYDRAULIC	59	Axle Drive Motor Brake
21	7015W-19	1/4	Valve (SA)	Steering Cylinder Back End	HYDRAULIC	32	Steering Cylinder
22	7015W-20	1/4	Valve (SB)	Steering Cylinder Rod End	HYDRAULIC	27	Steering Cylinder
23	7015W-21	3/8	Valve (DB)	4WD Block (B)	HYDRAULIC	21	4WD Manifold
24	7015W-22	3/8	Valve (DA)	4WD Block (A)	HYDRAULIC	21	4WD Manifold
25	7015W-29	5/8	Valve (T)	Oil Cooler Top Fitting	HYDRAULIC	38	Oil Cooler
26	7015W-28	5/8	Oil Cooler Fitting (Bottom)	Hydra Tank Filter	HYDRAULIC	63	Tank Return-Oil Cooler
27	7015W-25	1/2	Valve (P1)	Cntrl Box Bulkhead	HYDRAULIC	17	Engine Pump
28	7015W-26	1/2	Cntrl Box Bulkhead (P1)	Engine Bulkhead (Valve Side)	HYDRAULIC	39	Engine Pump
29	7015W-27	1/2	Valve (P2)	Engine Bulkhead (Tanks Side)	HYDRAULIC	36	Engine Pump
30	7015W-32	1/2	Engine Bulkhead (P1)	Engine Hydra Pump (Case End)	HYDRAULIC	21	Engine Pump (Kohler)
31	7015W-33	1/2	Engine Bulkhead (P2)	Engine Hydra Pump (Shaft End)	HYDRAULIC	21	Engine Pump (Kohler)
32	7015W-30	1	Hydra Tank	Engine Bulkhead	HYDRAULIC	37	Engine Pump Suction
33	7015W-31	1	Engine Bulkhead	Engine Hydra Pump (Bottom Suction)	HYDRAULIC	18	Engine Pump (Kohler)
34	7015W-34	5/16	Fuel Tank Pickup	Fuel Filter	FUEL	64	Fuel Pickup (Kohler)
35	7015W-35	5/16	Engine Bulkhead	Fuel Tank Return	FUEL	48	Fuel Return (Kohler)
36	7015W-34	5/16	Fuel Tank Pickup	Fuel Filter	FUEL	68	Fuel Pickup (Kubota)
37	7015W-35	5/16	Engine Bulkhead	Fuel Tank Return	FUEL	46	Fuel Return (Kubota)

NOTE: DUE TO CONTINUOUS DESIGN IMPROVEMENTS CONSULT FACTORY PRIOR TO ORDERING 1-800-243-9335.



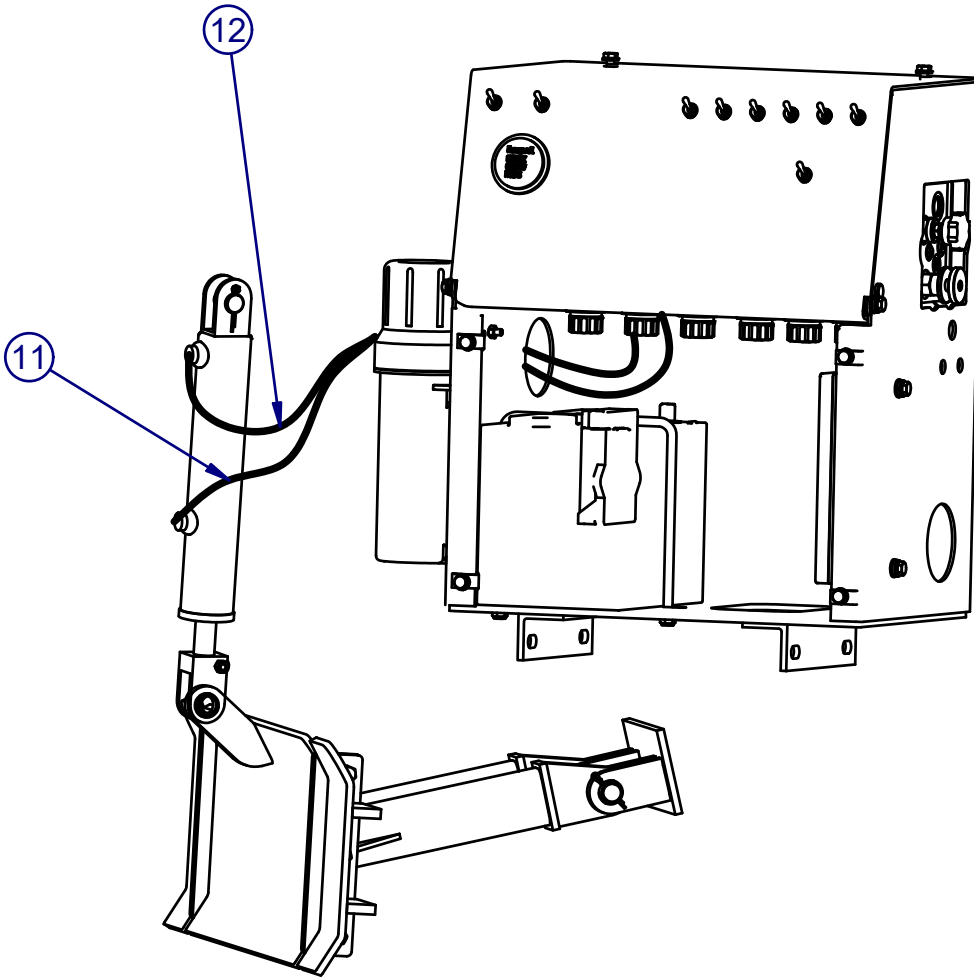
Item	Part No.	HOSE		APPLICATION			Overall Length (in.)	Comments
		Size (in.)	From	To	Media			
1	7015W-01	1/4	Valve (LA)	Cntrl Box Bulkhead (Tank Side)	HYDRAULIC	20	Lift Cylinder	
2	7015W-02	1/4	Valve (LB)	Cntrl Box Bulkhead (Valve Side)	HYDRAULIC	20	Lift Cylinder	
3	7015W-03	1/4	Cntrl Box Bulkhead (LB)	Machine Bulkhead (Valve Side)	HYDRAULIC	38	Lift Cylinder	
4	7015W-04	1/4	Cntrl Box Bulkhead (LA)	Machine Bulkhead (Tank Side)	HYDRAULIC	38	Lift Cylinder	
5	7015W-05	1/4	Machine Bulkhead (LA)	Lift Cylinder Rod End	HYDRAULIC	53	Lift Cylinder	
6	7015W-06	1/4	Machine Bulkhead (LB)	Lift Cylinder Back End	HYDRAULIC	39	Lift Cylinder	

NOTE: DUE TO CONTINUOUS DESIGN IMPROVEMENTS CONSULT FACTORY PRIOR TO ORDERING 1-800-243-9335.



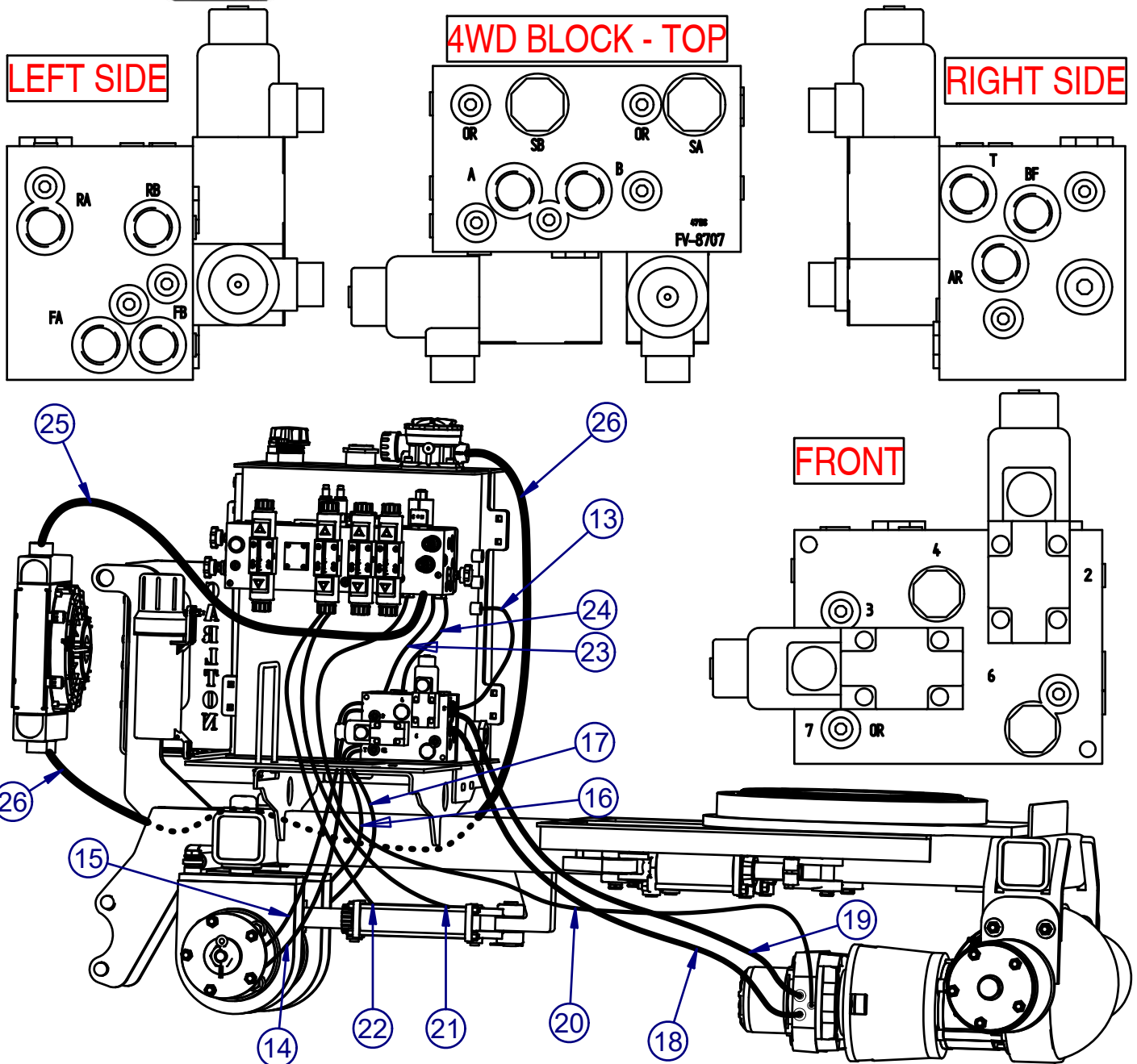
Item	Part No.	HOSE	APPLICATION			Overall Length (in.)	Comments
		Size (in.)	From	To	Media		
7	7015W-07	1/4	Valve (SA1)	Swing Cylinder Back End (Valve Side)	HYDRAULIC	46	Swing Cylinder
8	7015W-08	1/4	Valve (SA2)	Swing Cylinder Rod End (Tank Side)	HYDRAULIC	56	Swing Cylinder
9	7015W-09	1/4	Valve (SB1)	Swing Cylinder Rod End (Valve Side)	HYDRAULIC	52	Swing Cylinder
10	7015W-10	1/4	Valve (SB2)	Swing Cylinder Back End (Tank Side)	HYDRAULIC	50	Swing Cylinder

NOTE: DUE TO CONTINUOUS DESIGN IMPROVEMENTS CONSULT FACTORY PRIOR TO ORDERING 1-800-243-9335.



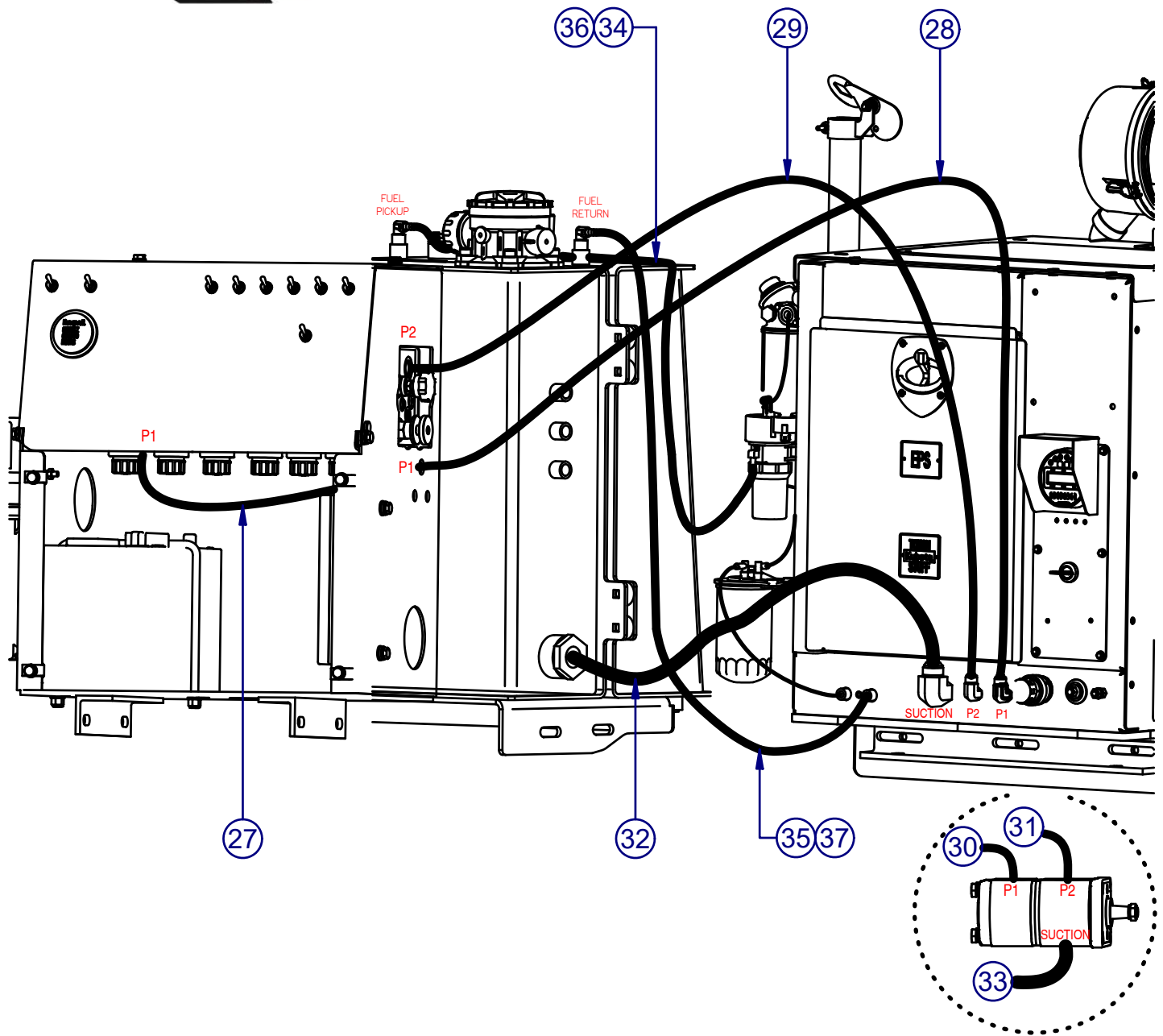
Item	Part No.	HOSE Size (in.)	APPLICATION			Overall Length (in.)	Comments
			From	To	Media		
11	7015W-11	1/4	Valve (BA)	Blade Cylinder Rod End	HYDRAULIC	34	Blade Cylinder
12	7015W-12	1/4	Valve (BB)	Blade Cylinder Back End	HYDRAULIC	28	Blade Cylinder

NOTE: DUE TO CONTINUOUS DESIGN IMPROVEMENTS CONSULT FACTORY PRIOR TO ORDERING 1-800-243-9335.



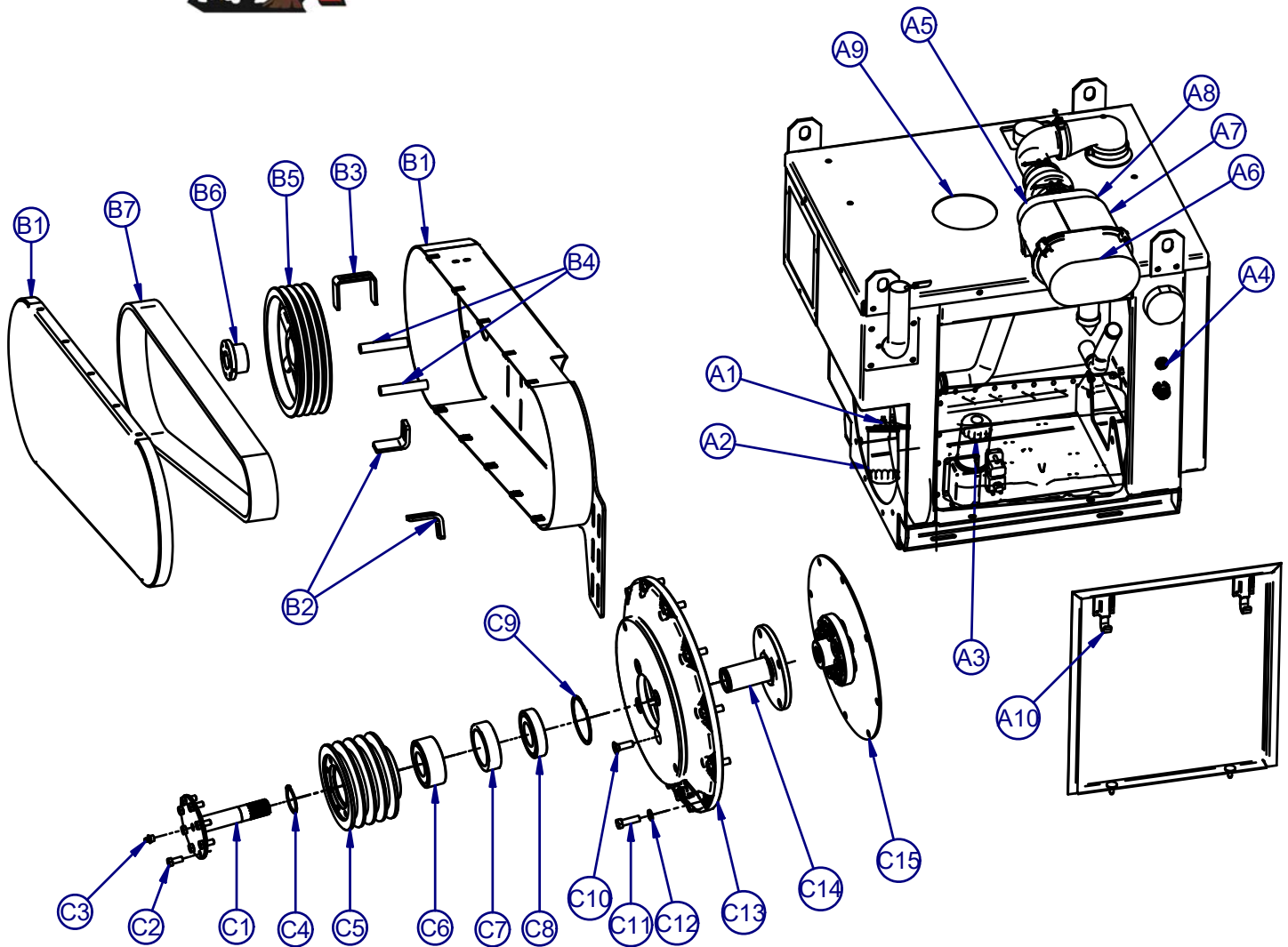
Item	Part No.	HOSE		APPLICATION			Overall Length (in.)	Comments
		Size (in.)	From	To	Media			
13	7015W-13	1/4	4WD Block (T)	Hydra Tank Fitting	HYDRAULIC	12	Tank Return-4WD Manifold	
14	7015W-14	1/4	4WD Block (FB)	Drive Motor Btm Fitting (Valve Side)	HYDRAULIC	23	4WD Drive Motor	
15	7015W-15	1/4	4WD Block (RB)	Drive Motor Top Fitting (Valve Side)	HYDRAULIC	23	4WD Drive Motor	
16	7015W-16	1/4	4WD Block (FA)	Drive Motor Top Fitting (Tank Side)	HYDRAULIC	25	4WD Drive Motor	
17	7015W-17	1/4	4WD Block (RA)	Drive Motor Btm Fitting (Tank Side)	HYDRAULIC	28	4WD Drive Motor	
18	7015W-23	3/8	4WD Block (AR)	Axle Drive Motor Btm Fitting	HYDRAULIC	34	Axle Drive Motor	
19	7015W-24	3/8	4WD Block (BF)	Axle Drive Motor Top Fitting	HYDRAULIC	35	Axle Drive Motor	
20	7015W-18	1/4	Valve (BR)	Brake Port/Axle Drive Motor	HYDRAULIC	59	Axle Drive Motor Brake	
21	7015W-19	1/4	Valve (SA)	Steering Cylinder Back End	HYDRAULIC	32	Steering Cylinder	
22	7015W-20	1/4	Valve (SB)	Steering Cylinder Rod End	HYDRAULIC	27	Steering Cylinder	
23	7015W-21	3/8	Valve (DB)	4WD Block (B)	HYDRAULIC	21	4WD Manifold	
24	7015W-22	3/8	Valve (DA)	4WD Block (A)	HYDRAULIC	21	4WD Manifold	
25	7015W-29	5/8	Valve (T)	Oil Cooler Top Fitting	HYDRAULIC	38	Oil Cooler	
26	7015W-28	5/8	Oil Cooler Fitting (Bottom)	Hydra Tank Filter	HYDRAULIC	63	Tank Return-Oil Cooler	

NOTE: DUE TO CONTINUOUS DESIGN IMPROVEMENTS CONSULT FACTORY PRIOR TO ORDERING 1-800-243-9335.



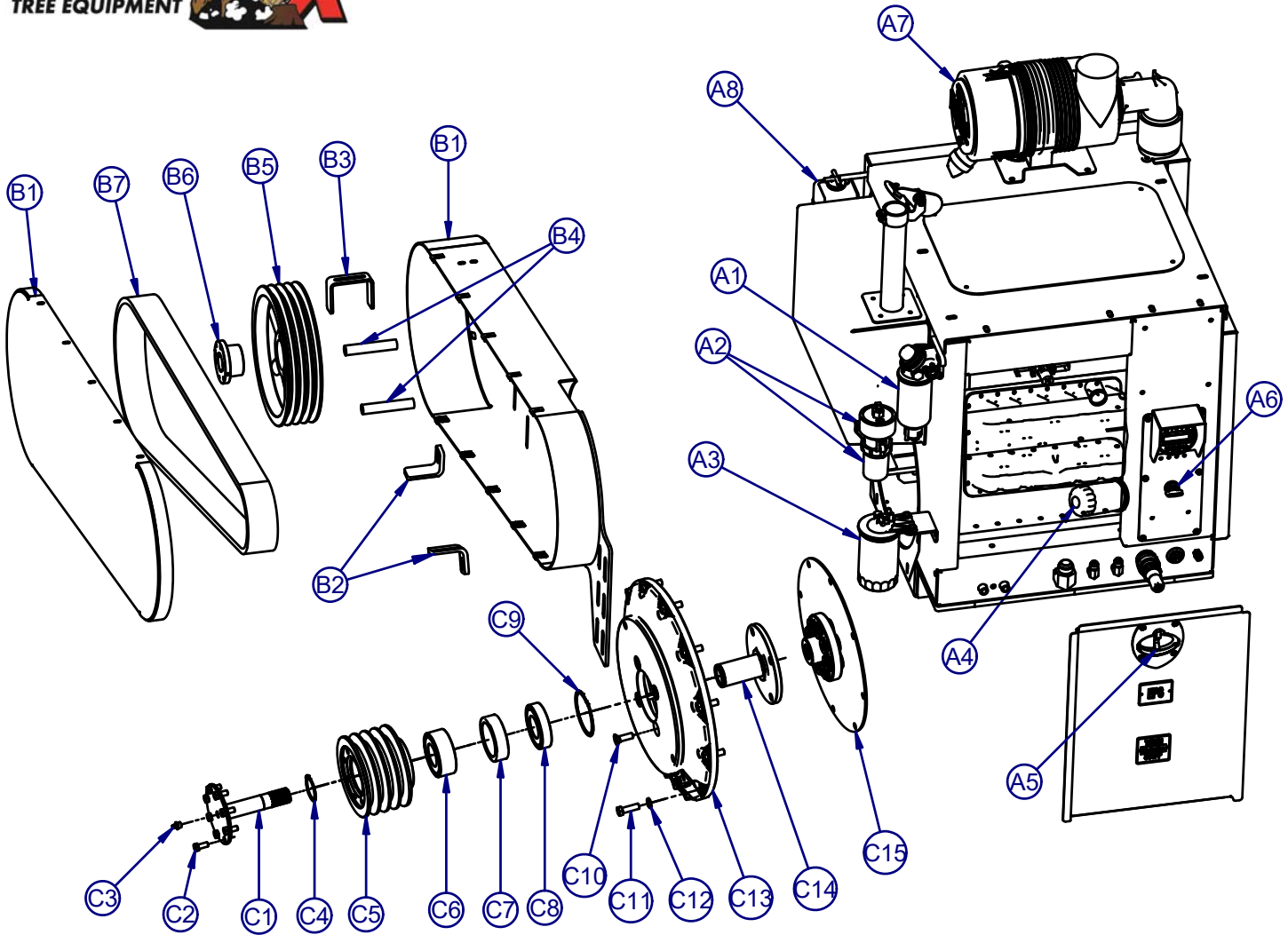
Item	Part No.	HOSE		APPLICATION			Overall Length (in.)	Comments
		Size (in.)	From	To	Media			
27	7015W-25	1/2	Valve (P1)	Cntrl Box Bulkhead	HYDRAULIC	17	Engine Pump	
28	7015W-26	1/2	Cntrl Box Bulkhead (P1)	Engine Bulkhead (Valve Side)	HYDRAULIC	39	Engine Pump	
29	7015W-27	1/2	Valve (P2)	Engine Bulkhead (Tanks Side)	HYDRAULIC	36	Engine Pump	
30	7015W-32	1/2	Engine Bulkhead (P1)	Engine Hydra Pump (Case End)	HYDRAULIC	21	Engine Pump (Kohler)	
31	7015W-33	1/2	Engine Bulkhead (P2)	Engine Hydra Pump (Shaft End)	HYDRAULIC	21	Engine Pump (Kohler)	
32	7015W-30	1	Hydra Tank	Engine Bulkhead	HYDRAULIC	37	Engine Pump Suction	
33	7015W-31	1	Engine Bulkhead	Engine Hydra Pump (Bottom Suction)	HYDRAULIC	18	Engine Pump (Kohler)	
34	7015W-34	5/16	Fuel Tank Pickup	Fuel Filter	FUEL	64	Fuel Pickup (Kohler)	
35	7015W-35	5/16	Engine Bulkhead	Fuel Tank Return	FUEL	48	Fuel Return (Kohler)	
36	7015W-34	5/16	Fuel Tank Pickup	Fuel Filter	FUEL	68	Fuel Pickup (Kubota)	
37	7015W-35	5/16	Engine Bulkhead	Fuel Tank Return	FUEL	46	Fuel Return (Kubota)	

NOTE: DUE TO CONTINUOUS DESIGN IMPROVEMENTS CONSULT FACTORY PRIOR TO ORDERING 1-800-243-9335.



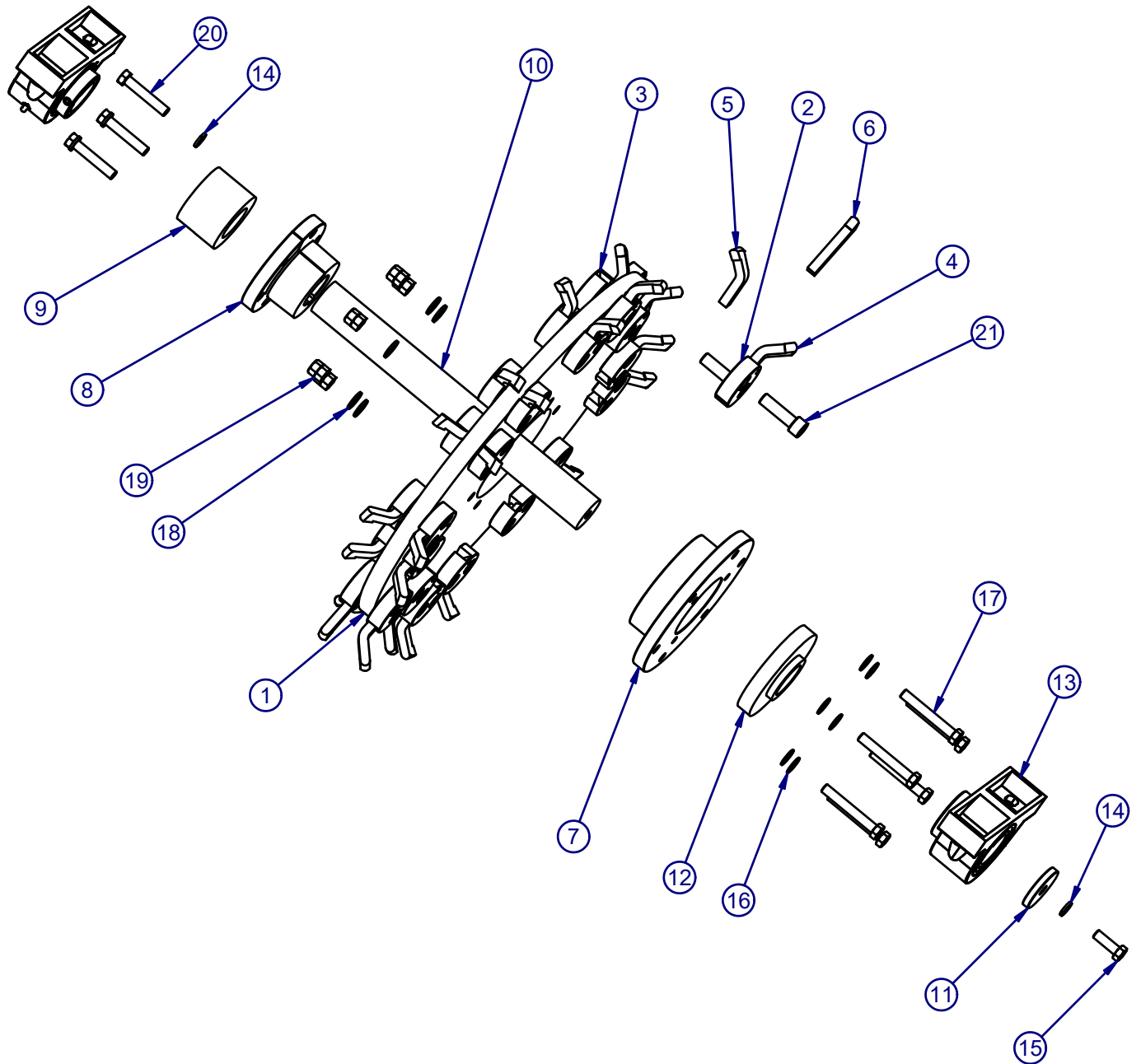
ITEM	PART	DESCRIPTION	QTY	ITEM	PART	DESCRIPTION	QTY
		ENGINE - KOHLER 74HP				STUB SHAFT ASSEMBLY	
A1	0200147M	FUEL WATER SEPERATOR	1	C1	0500631H	STUB SHAFT	1
A2	0200147B	FUEL FILTER, PRIMARY	1	C2		BOLT, HEX	8
A3	0200147A	OIL FILTER, ENGINE	1	C3		GREESE FITTING	1
A4	0200147J	KEY SWITCH, IGNITION	1	C4	0500631F	SNAP RING	1
A5	0200147K	AIR FILTER ASSEMBLY	1	C5	0500632A	SHEAVE	1
A6	0200147K1	END CAP, AIR FILTER ASSY	1	C6	0500631DR1	DOUBLE BEARING	1
A7	0200147C	AIR FILTER ELEMENT, PRIMARY	1	C7	0500631J	BEARING SPACER	1
A8	0200147D	AIR FILTER ELEMENT, SECONDARY	1	C8	0500631CR1	SINGLE BEARING	1
A9	0200147H	COVER, ACCESS, TOP	1	C9	0500631G	SPIRAL RETAINER	1
A10	0200147N	LATCH, DOOR	1	C10		SCREW, HEX SOC FLAT, M12-1.75 X 16	4
		BELT GUARD ASSEMBLY		C11		BOLT, HEX, M10-1.25 X 30	12
B1	17030186-1	BELT GUARD HOUSING ASSEMBLY	1	C12		WASHER, LOCK, 10MM	12
B2	17030088-2	PLATE, BELT KEEPER, ENGINE	2	C13		BELL HOUSING	1
B3	17030187-2	PLATE, BELT KEEPER, GUARD	1	C14	0500631I	BEARING SLEEVE	1
B4	17030025-1	TUBING, BELT KEEPER	2	C15	0500634B	COUPLING PLATE ASSY	1
B5	0250104	SHEAVE, JACKSHAFT	1				
B6	0250122	BUSHING, JACKSHAFT	1				
B7	0400131	V-BELT	1				
				*	0500634	STUB SHAFT ASSY, COMPLETE	
				*	0500634A	STUB SHAFT ASSY, w/o COUPLING PLATE	

NOTE: DUE TO CONTINUOUS DESIGN IMPROVEMENTS CONSULT FACTORY PRIOR TO ORDERING 1-800-243-9335.



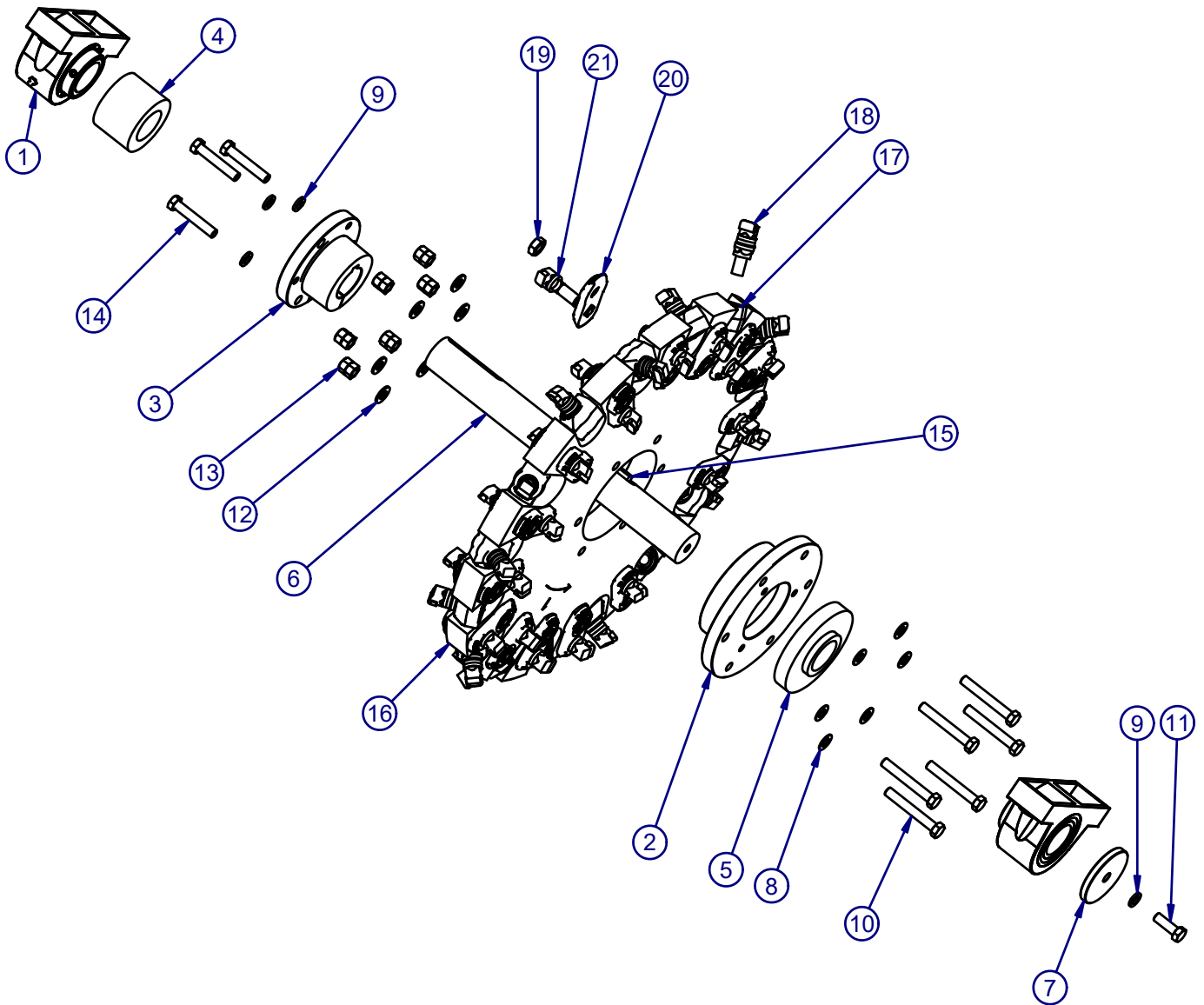
ITEM	PART	DESCRIPTION	QTY	ITEM	PART	DESCRIPTION	QTY
ENGINE - KUBOTA 74HP				STUB SHAFT ASSEMBLY			
A1	020013332D	FUEL WATER SEPARATOR	1	C1	0500631H	STUB SHAFT	1
A2	020013332H	FUEL PUMP ASSEMBLY	1	C2		BOLT, HEX	8
A2	020013332C	FUEL FILTER, FUEL PUMP BOWL	1	C3		GREASE FITTING	1
A3	020013332B	FUEL FILTER, PRIMARY	1	C4	0500631F	SNAP RING	1
A4	0200130	OIL FILTER, ENGINE	1	C5	0500632A	SHEAVE	1
A5	0200130D1	LATCH, DOOR	1	C6	0500631DR1	DOUBLE BEARING	1
A6	0200134F	KEY SWITCH, IGNITION	1	C7	0500631J	BEARING SPACER	1
A6	0200134F1	KEY, IGNITION, UNIVERSIAL	1	C8	0500631CR1	SINGLE BEARING	1
A7	0200137A	AIR FILTER ASSEMBLY	1	C9	0500631G	SPIRAL RETAINER	1
A7	0200115	AIR FILTER ELEMENT, PRIMARY	1	C10		SCREW, HEX SOC FLAT, M12-1.75 X 16	4
A7	0200117	AIR FILTER ELEMENT, SECONDARY	1	C11		BOLT, HEX, M10-1.25 X 30	12
A8	0200134K1	RESIVOIR, COOLANT	1	C12		WASHER, LOCK, 10MM	12
BELT GUARD ASSEMBLY				C13		BELL HOUSING	1
B1	17030186-1	BELT GUARD HOUSING ASSEMBLY	1	C14	0500631I	BEARING SLEEVE	1
B2	17030088-2	PLATE, BELT KEEPER, ENGINE	2	C15	0500632E	COUPLING PLATE ASSY	1
B3	17030187-2	PLATE, BELT KEEPER, GUARD	1				
B4	17030025-1	TUBING, BELT KEEPER	2				
B5	0250106	SHEAVE, JACKSHAFT	1				
B6	0250122	BUSHING, JACKSHAFT	1				
B7	0400131	V-BELT	1				
				*	0500632	STUB SHAFT ASSY, COMPLETE	
				*	0500632B	STUB SHAFT ASSY, w/o COUPLING PLATE	

NOTE: DUE TO CONTINUOUS DESIGN IMPROVEMENTS CONSULT FACTORY PRIOR TO ORDERING 1-800-243-9335.



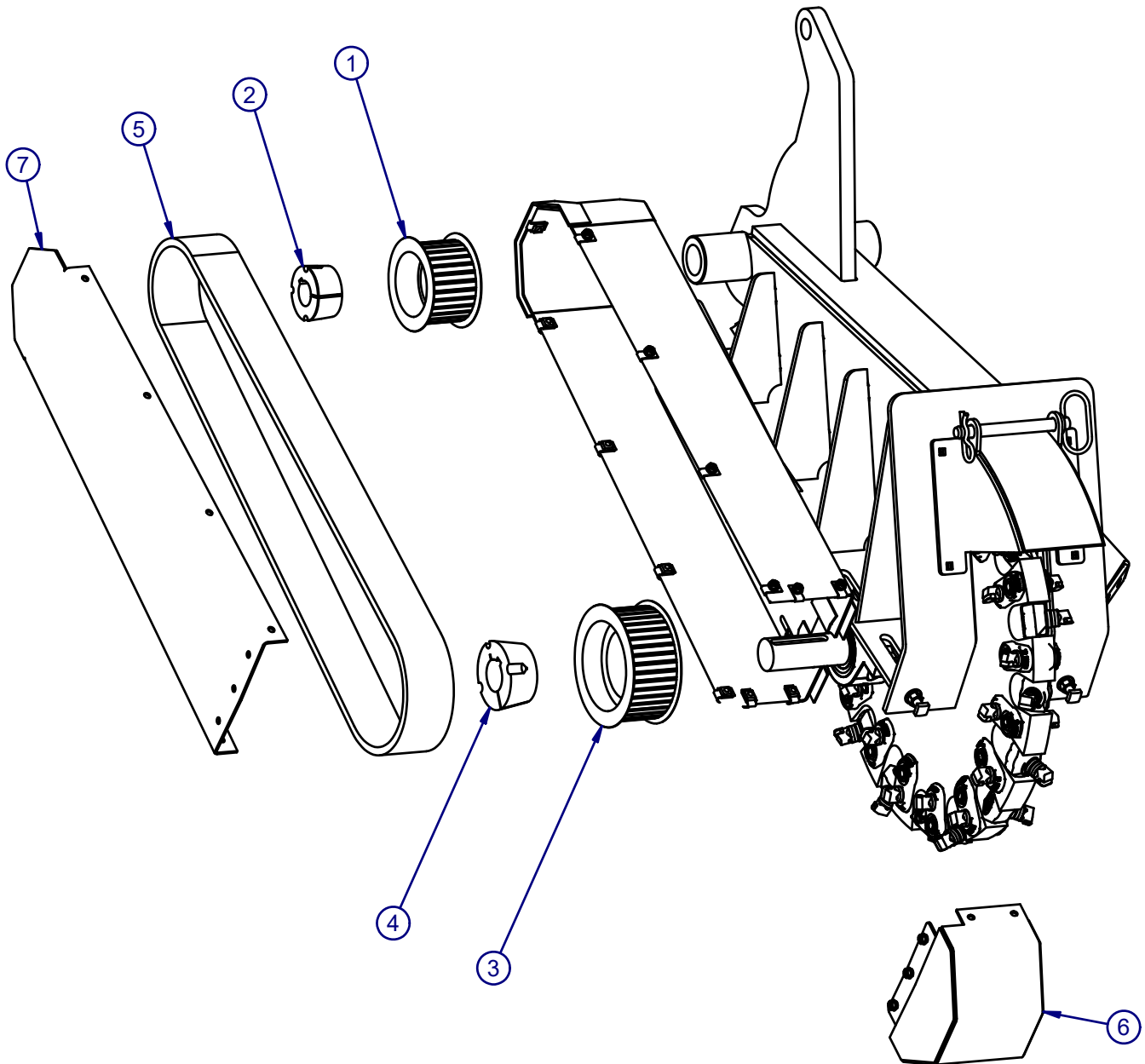
ITEM	PART	DESCRIPTION	QTY	ITEM	PART	DESCRIPTION	QTY
1	17030026-2	PLATE, CUTTER WHEEL, 7015	1	12	17030022-1	COLLER, RAZOR WHEEL, LARGE	1
2	0450106	ROUND POCKET - C/S	16	13	0500114	BEARING - 2"	2
3	0450107	ROUND POCKET - THD	16	14	30A-08ZI	LOCK WASHER, 1/2" USS GR8 Z&Y	4
4	0450102	TOOTH, CARBIDE TIPPED, 45 DEGREE RIGHT	15	15	12A-0812ZI	HEX C/S 1/2-13 X 1-1/2 UNC GR 8 Z&Y	1
5	0450103	TOOTH, CARBIDE TIPPED, 45 DEGREE LEFT	15	16	31B-08ZI	FLAT WASHER 1/2 USS WIDE GR 8 Z&Y	6
6	0450101	TOOTH - STRAIGHT	2	17	12A-0828ZI	HEX C/S 1/2-13 X 3 1/2 UNC GR 8	6
7	17030020-1	HUB, "E" BUSHING CUTTER WHEEL	1	18	34A-08	FLAT WASHER, NARROW 1/2 SAE GR8	6
8	0250183C	BUSHING, QD INTERCHANGEABLE, E 2"	1	19	29A-08	NUT, STOVER LOCK, 1/2-13 UNC GR8	12
9	17030023-1	COLLAR, RAZOR WHEEL, SMALL	1	20	12A-0822	HEX C/S 1/2-13 X 2 3/4 UNC GR 5	3
10	17030021-1	SHAFT, RAZOR WHEEL	1	21	0450109	TOOTH BOLT - 5/8-18 X 2 1/8"	32
11	17030024-1	ENDCAP, CUTTER WHEEL SHAFT	1				

NOTE: DUE TO CONTINUOUS DESIGN IMPROVEMENTS CONSULT FACTORY PRIOR TO ORDERING 1-800-243-9335.



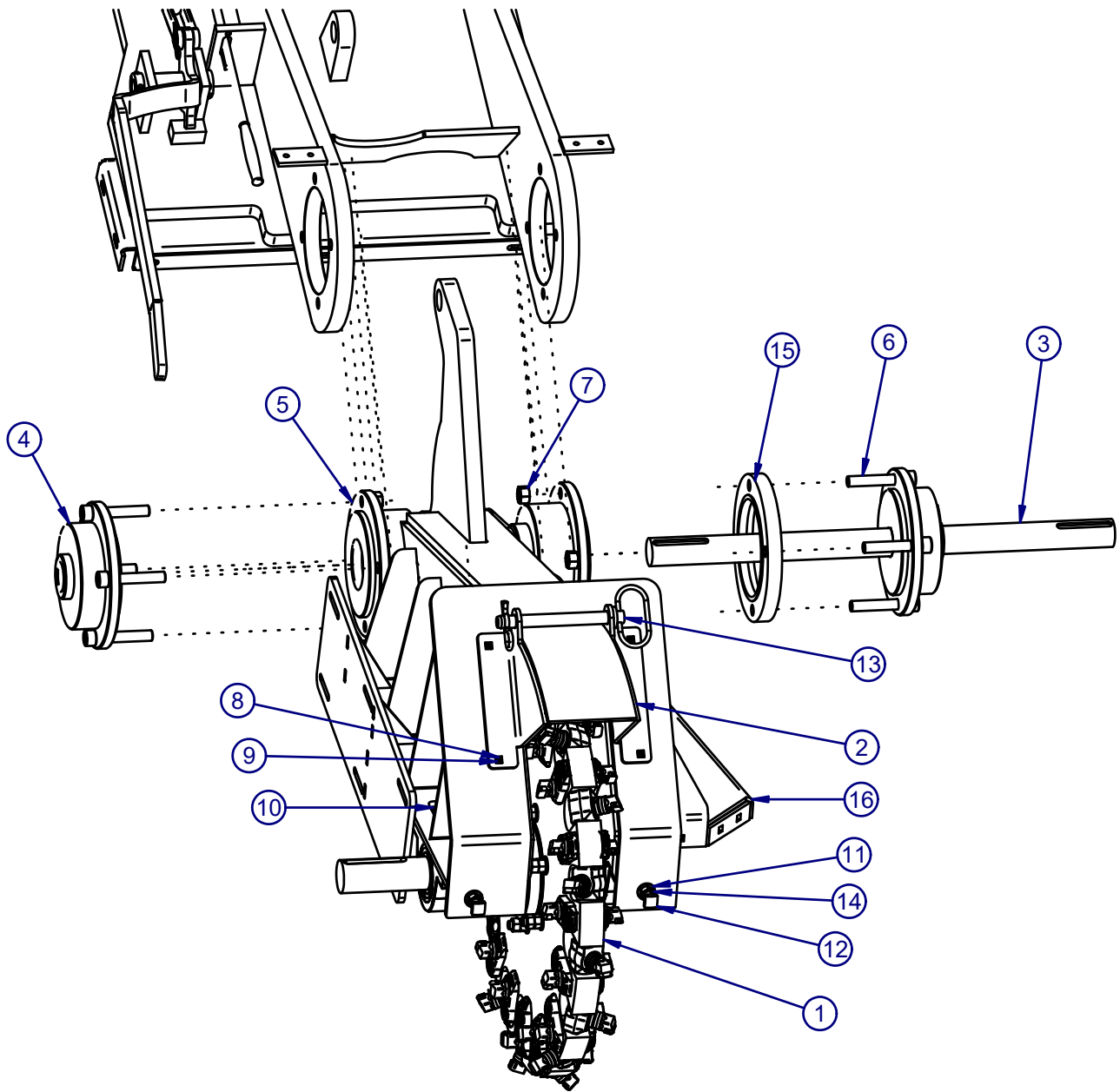
ITEM	PART	DESCRIPTION	QTY	ITEM	PART	DESCRIPTION	QTY
1	0500114	BEARING - 2"	2	12	34A-08	FLAT WASHER, NARROW 1/2 SAE GR8	6
2	17030020-1	HUB,"E" BUSHING CUTTER WHEEL	1	13	29A-08	NUT,STOVER LOCK, 1/2-13 UNC GR8	12
3	0250183C	BUSHING,QD INTERCHANGEABLE,E 2"	1	14	12A-0822	HEX C/S 1/2-13 X 2 3/4 UNC GR 5	3
4	17030023-1	COLLAR,RAZOR WHEEL,SMALL	1	15	70A-0820	KEY,1/2 SQ. 2-1/2" LONG	1
5	17030022-1	COLLER,RAZOR WHEEL,LARGE	1	16	17030006-2	MACHINING,RAZOR WHEEL	1
6	17030021-1	SHAFT,RAZOR WHEEL	1	17	0450133	JP SANDVIK SHORT P/B HOLDER	16
7	14130014-1	WASHER,BEARING	1	18	04501311	JP SANDVIK - SHORT W LONG HEAD	16
8	31B-08ZI	FLAT WASHER 1/2 USS WIDE GR 8 Z&Y	6	19	0450126A	SANDVIK THIN LOCKING JAM NUT	48
9	30A-08ZI	LOCK WASHER,1/2" USS GR8 Z&Y	4	20	0450132	JP SANDVIK PLOW BOLT HOLDER	32
10	12A-0828ZI	HEX C/S 1/2-13 X 3 1/2 UNC GR 8	6	21	0450130	JP SANDVIK PLOW BOLT TOOTH	32
11	12A-0812ZI	HEX C/S 1/2-13 X 1-1/2 UNC GR 8 Z&Y	1				

NOTE: DUE TO CONTINUOUS DESIGN IMPROVEMENTS CONSULT FACTORY PRIOR TO ORDERING 1-800-243-9335.



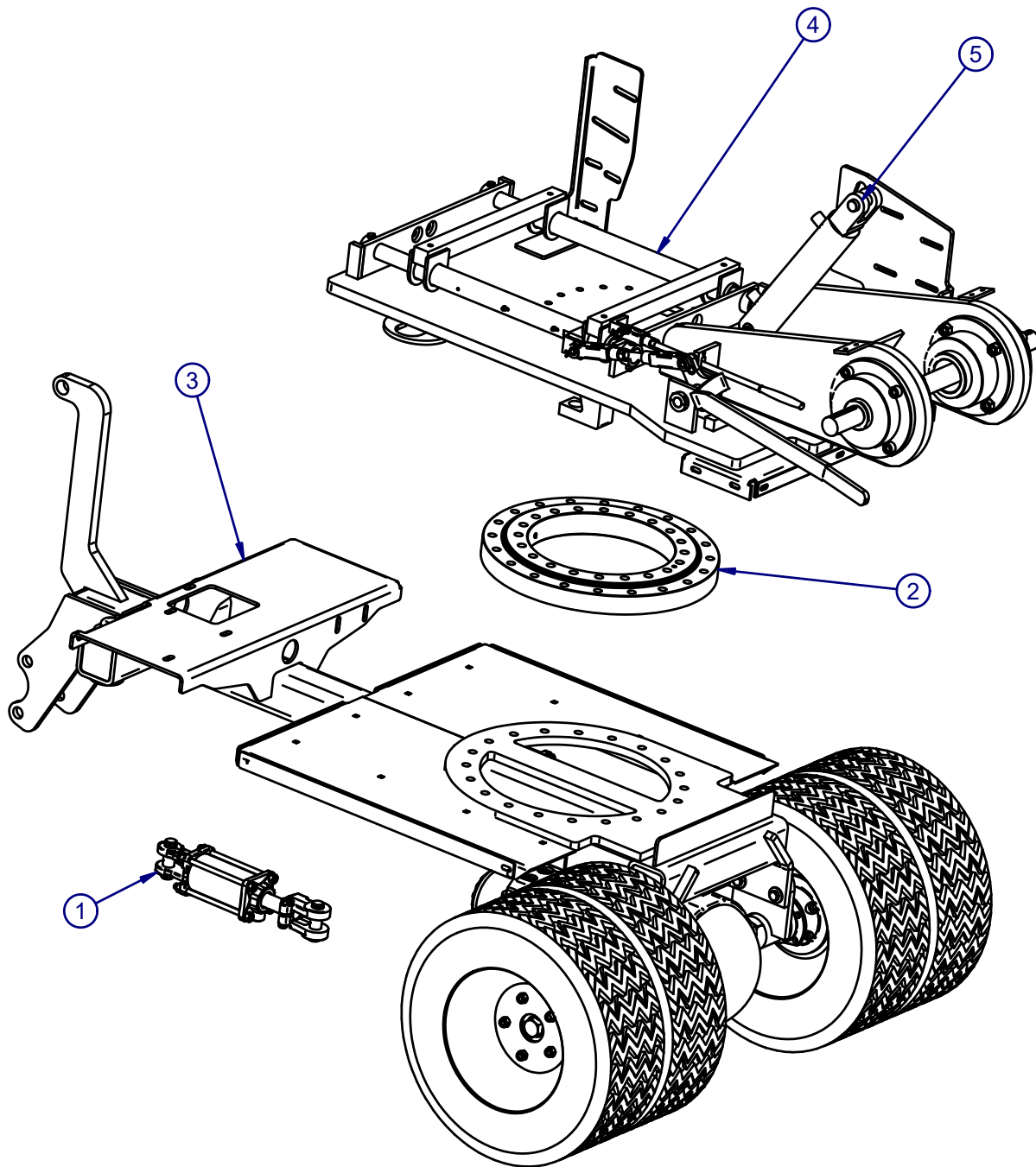
ITEM	PART	DESCRIPTION	QTY
1	0250115B	PC SPRKT 14MX-29S-68TAPER LOCK	1
2	0250115G	BUSHING,SPROCKET,JACK SHAFT	1
3	0250115C	SPROCKET,POLY CHAIN,CUTTER WHEEL	1
4	0250115M	BUSHING,TAPER LOCK,2"	1
5	0400123	POLYCHAIN BELT	1
6	17030014-4	WELDMENT,POLY CHAIN GUARD, END CAP	1
7	17030007-4	POLY CHAIN GUARD ASSEMBLY	1

NOTE: DUE TO CONTINUOUS DESIGN IMPROVEMENTS CONSULT FACTORY PRIOR TO ORDERING 1-800-243-9335.



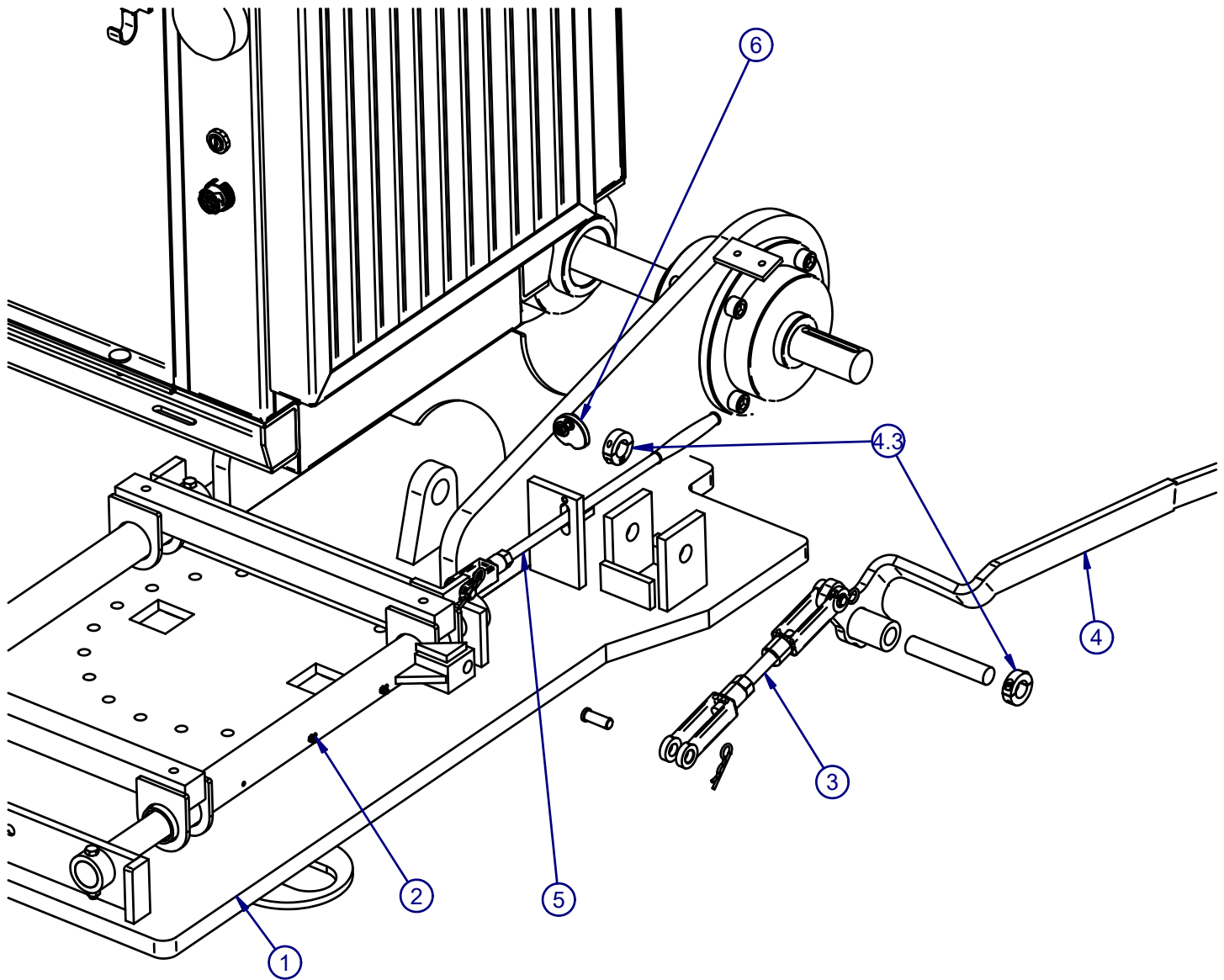
ITEM	PART	DESCRIPTION	QTY	ITEM	PART	DESCRIPTION	QTY
1	17030003-2	ASSY,RAZOR WHEEL,26.5 DIA	1	9	24D-06	NUT,ELASTIC STOP, 3/8-16 UNC GR8	9
2	17040008-2	WELDMNT,CHIP REFLECTOR	1	10	10D-0840	BOLT,SQ. HEAD,1/2"-13 X 5" UNC GR8	2
3	17040022-1	SHAFT,JACK SHAFT 1-11/16	1	11	34A-08	FLAT WASHER, NARROW 1/2 SAE GR8	8
4	0500144	BEARING,JACKSHAFT,1 11/16"	2	12	10D-0832Z1	SQUARE HEAD BOLT,1/2-13 X 4 UNC GR 8	2
5	0500145	BEARING,BOOM,2 15/16"	2	13	0150605	HITCH PIN - 3/4 X 6 1/4	1
6	12D-1028	SOC HD C/S 5/8-11 X 3-1/2" UNC BLCK	8	14	20A-08	NUT,HEX,1/2-13 UNC GR8	8
7	0150216	NUT,LOCK,5/8-11 UNC GR 8	8	15	17050020-1	SPACER,JACK SHAFT BEARING,KUBOTA	1
8	10G-0608	CARRIAGE BOLT 3/8-16 X 1 UNC GR 8	9	16	17040123-2	WELDMNT,CHIPGUARD,BOOM,MOTOR SIDE	1

NOTE: DUE TO CONTINUOUS DESIGN IMPROVEMENTS CONSULT FACTORY PRIOR TO ORDERING 1-800-243-9335.



ITEM	PART	DESCRIPTION	QTY
1	0300105C	HYDRAULIC CYLINDER 3X4	2
2	0500125	TURNTABLE BEARING - 3500-4 7015	1
3	17010001-2	ASSY, FRAME, 4WD	1
4	17050001-2	ASSY, TURN TABLE	1
5	0300105F	HYDRAULIC CYLINDER - 3X12	1

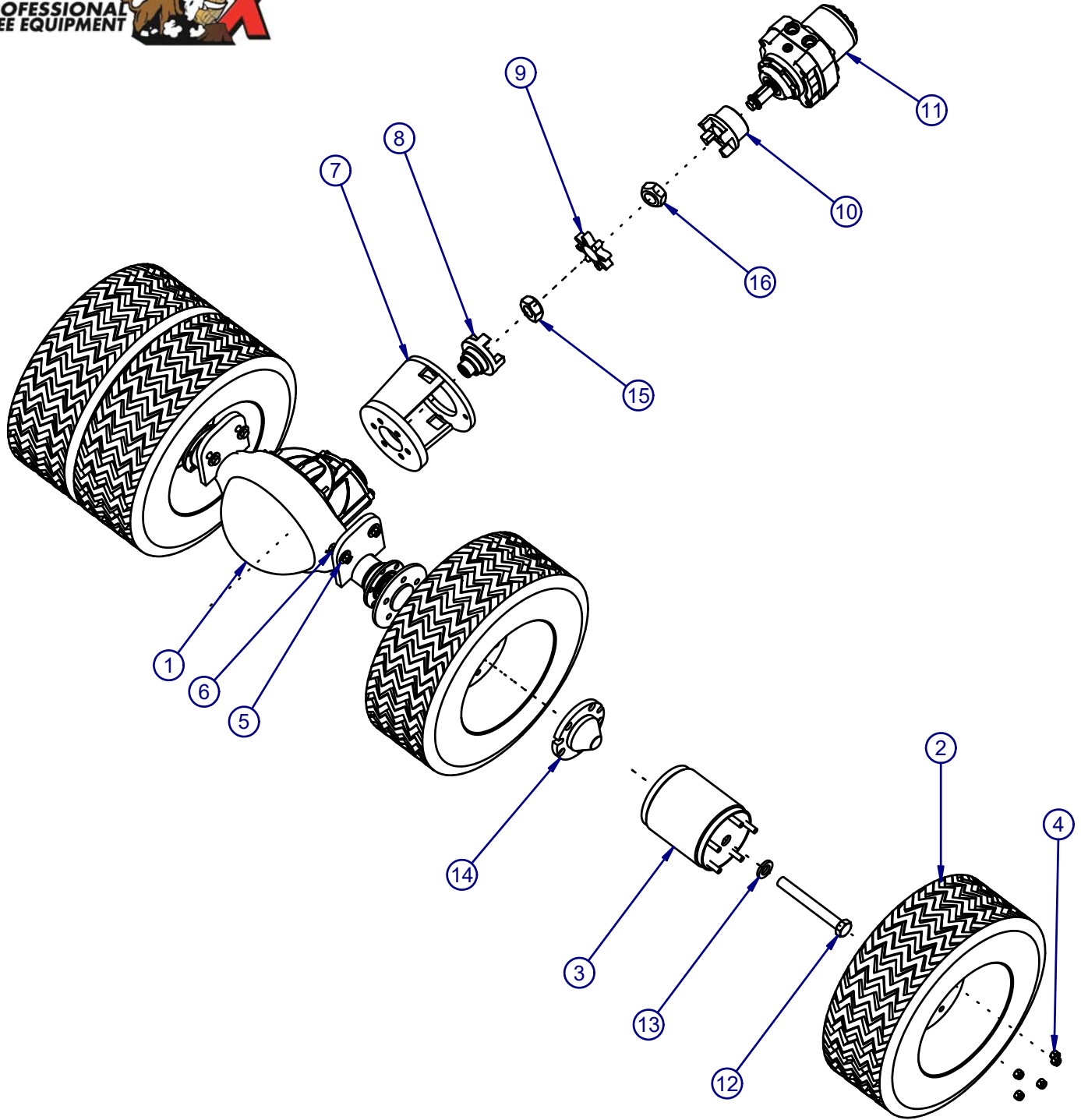
NOTE: DUE TO CONTINUOUS DESIGN IMPROVEMENTS CONSULT FACTORY PRIOR TO ORDERING 1-800-243-9335.



ITEM	PART	DESCRIPTION	QTY	ITEM	PART	DESCRIPTION	QTY
1		TURN TABLE ASSEMBLY	1	5.1	17520005-1	WELDMENT,LATCH HANDLE	1
2	0150601	GREASE FITTING 1/4-28 STRAIGHT	6	5.2	0400212	HANDLE,GRIP 1/2"	1
3	17020178	KIT, ENGAGEMENT HANDLE LINKAGE	1	5.3	0150606	YOKE END,1/2"-20,RH THREAD	1
3.1	17020179-1	ROD, THREADED LINKAGE, LH, 7015	1	5.4	0150606B	HEAVY HEX NUT,1/2"-20,GRADE 2H	1
3.2	0150606G	5/8 HEAVY HEX NUT	1	5.5	0150603	PIN,CLEVIS,1/2	1
3.3	0150606C	YOKE, END, 5/8-16	2	5.6	0150504	HAIRPIN COTTER (HITCHPIN) 1/8	1
3.4	0150606E	PIN, YOKE END 5/8	2	6	14040051	KIT, LATCH HANDLE SAFETY	1
3.5	0150504	HAIRPIN COTTER (HITCHPIN) 1/8	2	6.1	14040051-2	PLATE,LATCH HANDLE SAFETY	1
4	17020008	KIT, SLIDE ENGAGEMENT HANDLE	1	6.2	0150637	ALUMINUM SPACER 92510A764	1
4.1	17020008-1	HANDLE, ENGINE ENGAGEMENT	1	6.3	0150102E	HEX C/S 1/4-20 X 1-1/4	1
4.2	17020060-1	ROUND BAR,ENGAGEMENT HANDLE	1	6.4	31A-04	FLAT WASHER, 1/4 USS GRD NARROW 5	2
4.3	0150703A	SPLIT LOCK COLLAR, 7/8	2	6.5	29A-04	NUT,STOVER LOCK, 1/4-20 UNC GR8	1
5	14040092	KIT, LATCH HANDLE	1				

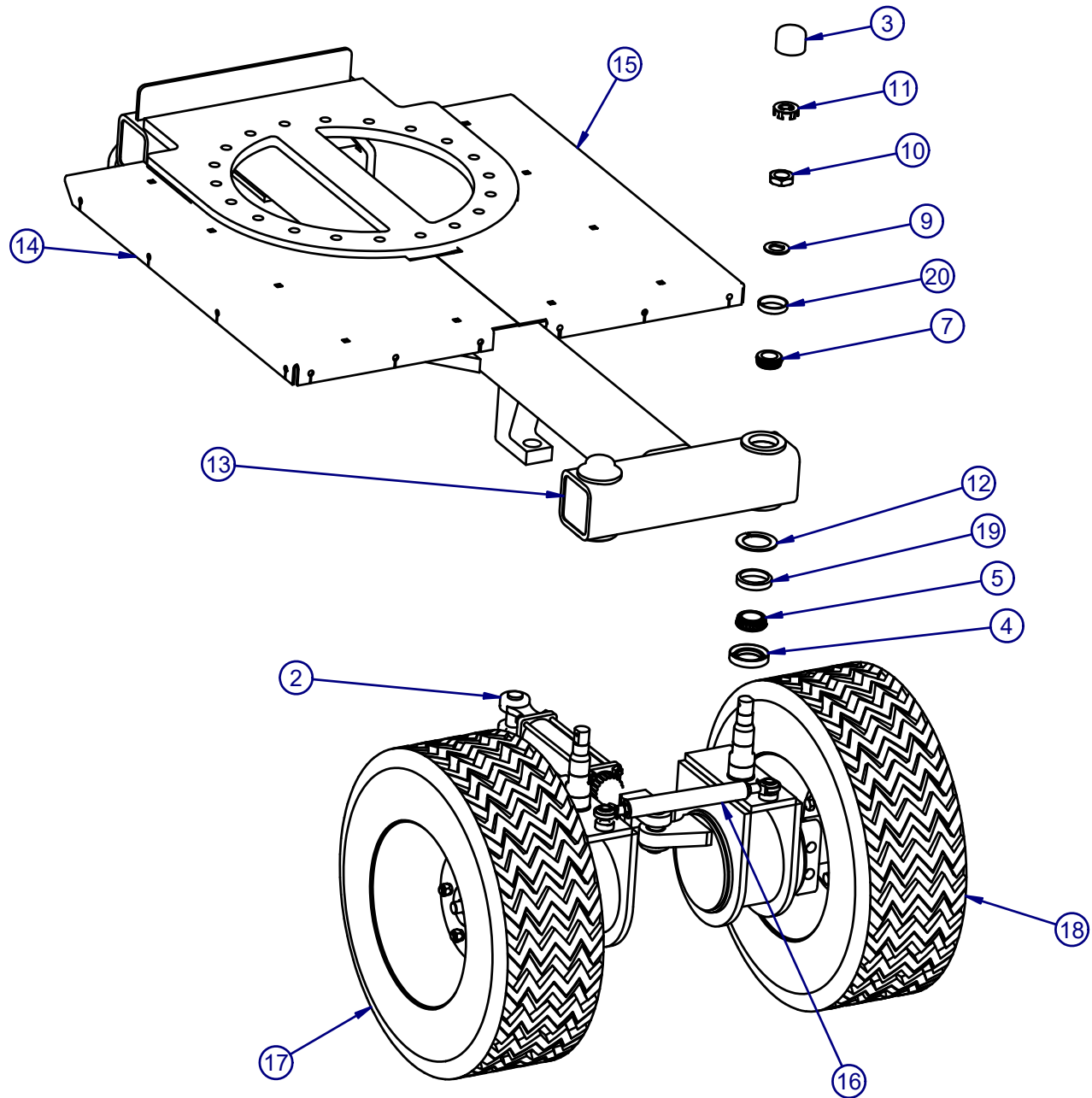
NOTE: DUE TO CONTINUOUS DESIGN IMPROVEMENTS CONSULT FACTORY PRIOR TO ORDERING 1-800-243-9335.

DRIVE AXLE/DUAL WHEEL ASSEMBLY



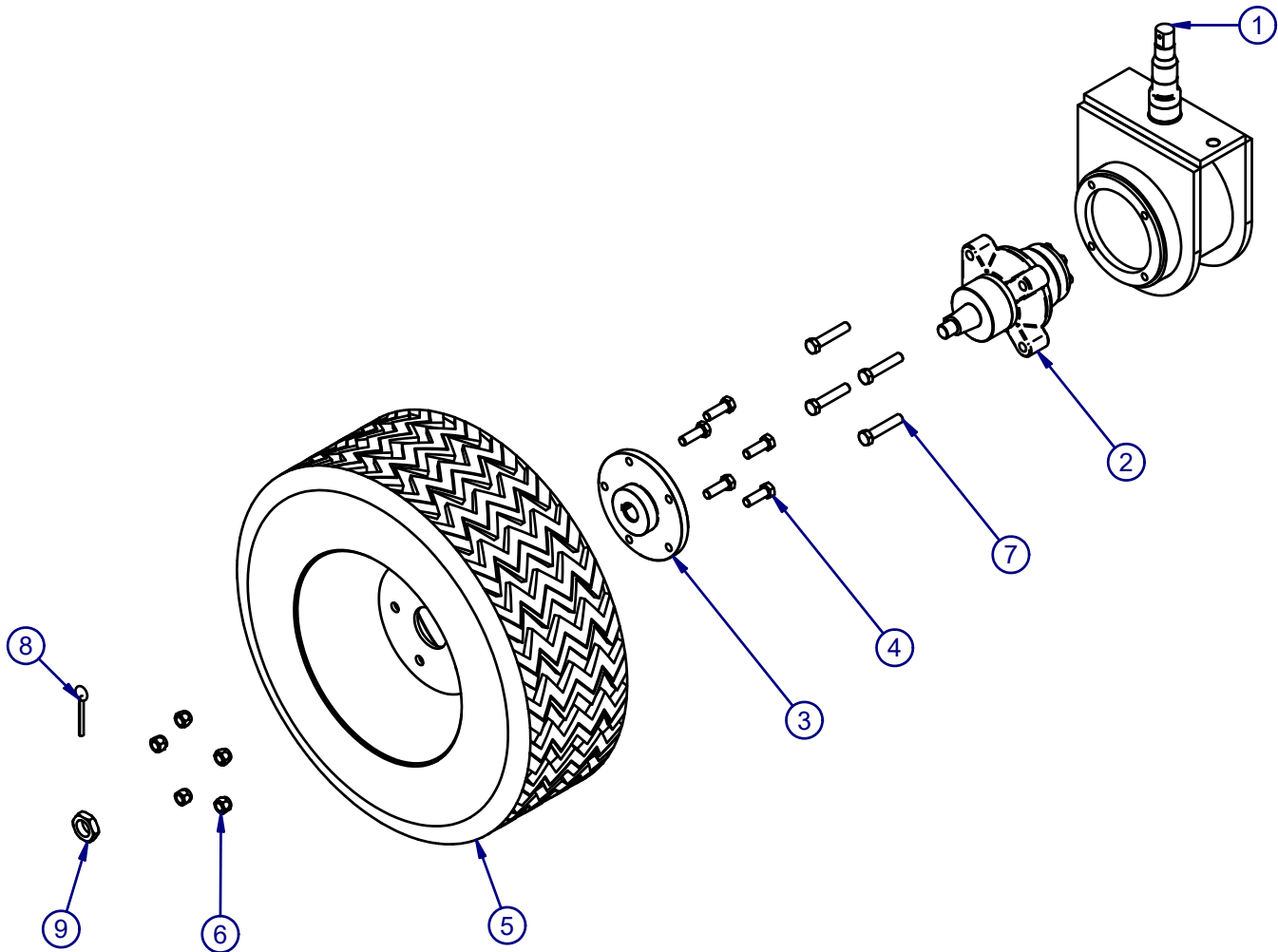
ITEM	PART	DESCRIPTION	QTY	ITEM	PART	DESCRIPTION	QTY
1	0550600	DANA REAR END	1	9	0550613	SPIDER, INSERT, DRIVE MOTOR, 7015	1
2	0550010E	CLIMB PRO TIRE ASSEMBLY 4400-4	4	10	0550612	COUPLING,DRIVE MOTOR,7015	1
3	17060007-1	WELDMENT,SPACER,DUAL WHEEL	2	11	0300118E	HYDRAULIC BRAKE MOTOR,7015	1
4	0550102	LUG NUT - 1/2-20	20	12	12A-1664ZI	HEX C/S 1-8 X 8 UNC GR 8	2
5	0150304	FLAT WASHER 1/2 USS GR 8 Z&Y	8	13	30A-16	LOCKWASHER 1" USS GR8 ZINC	2
6	0150107	HEX C/S 1/2-13 X 2 UNC GR 8	4	14	4400357	INNER HUB, SINGLE BOLT	2
7	0550610	BEE HIVE DANA REAR END	1	15	0150211A	NUT, HEX, AUTOLOCK, 3/4"-16	1
8	0550611	COUPLING,REAR END,DANA,7015	1	16	0300043A	NUT, HEX, SECURITY LOCK, 1"-20	1

NOTE: DUE TO CONTINUOUS DESIGN IMPROVEMENTS CONSULT FACTORY PRIOR TO ORDERING 1-800-243-9335.



ITEM	PART	DESCRIPTION	QTY	ITEM	PART	DESCRIPTION	QTY
1	0150801	BUSHING,HARDENED,1"	2	10	0550216	SPINDLE NUT - 1"-14	2
2	0300105Y	HYDRAULIC CYLINDER 3 X 6	1	11	0550217	TANG WASHER	2
3	0550109	GREASE CAP - 3500# 2"	2	12	14060044-1	PLATE,STEERING INNER BEARING SEAL	2
4	0550208	E-Z LUBE GREASE SEAL	2	13	17010015-2	WELDMENT,FRAME,4WD/2WD	1
5	0550209	INNER BEARING - 3500#	2	14	17030065-4	PLATE,CHIP DECK,LH,4WD/2WD	1
6	0550210	INNER BEARING RACE - 3500#	1	15	17030066-4	PLATE,CHIP DECK,RH,4WD/2WD	1
7	0550214	OUTER BEARING - 3500#	2	16	17060042-1	ASSY,STEERING LINKAGE	1
8	0550213	OUTER BEARING RACE - 3500#	1	17	17060048-1	ASSY,SPINDLE,FRONT,4WD,RH	1
9	0550215	SPINDLE "D" WASHER	2	18	17060049-1	ASSY,SPINDLE,FRONT,4WD,LH	1

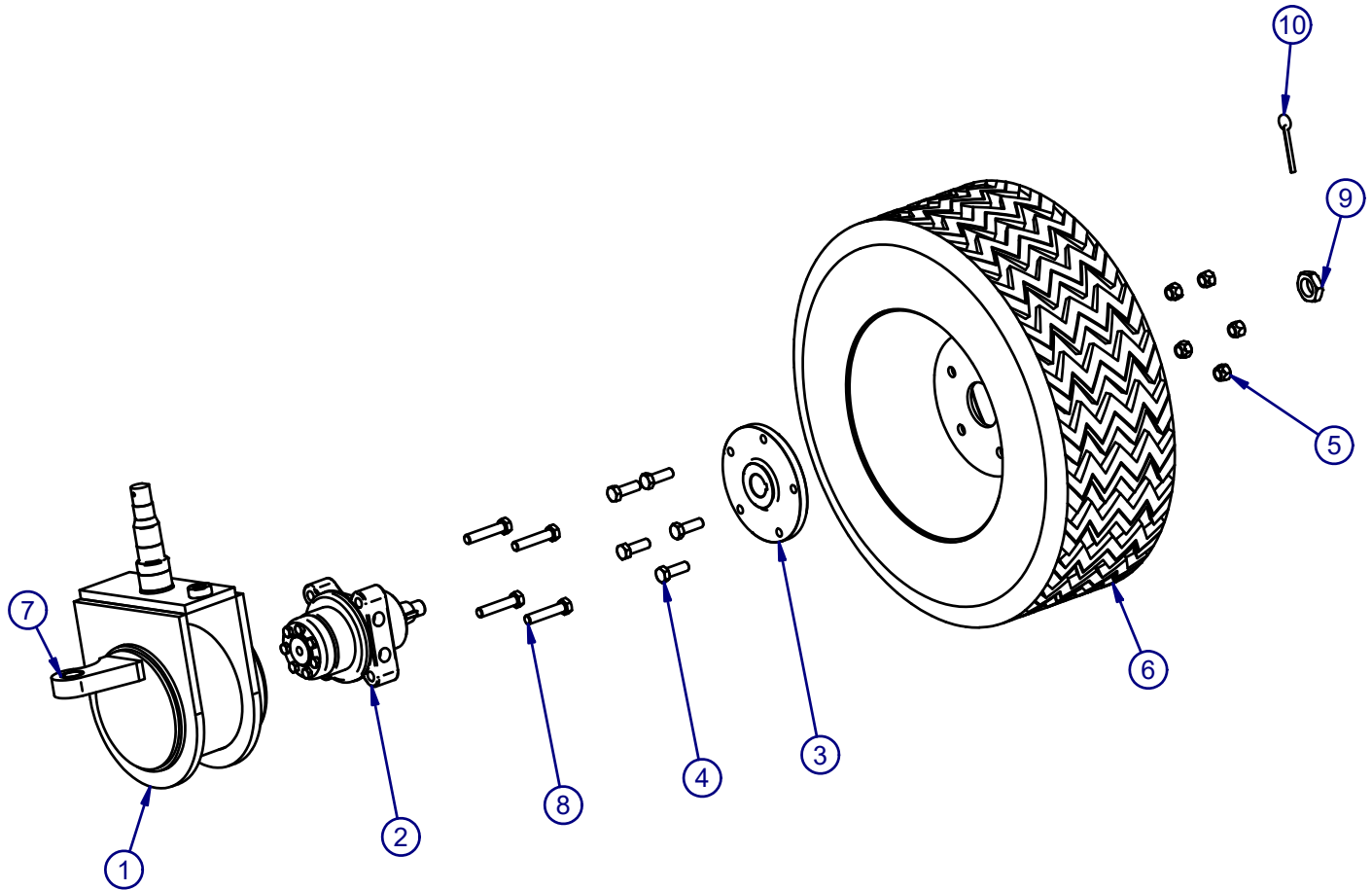
NOTE: DUE TO CONTINUOUS DESIGN IMPROVEMENTS CONSULT FACTORY PRIOR TO ORDERING 1-800-243-9335.



ITEM	PART	DESCRIPTION	QTY
1	17060005-1	WELDMNT,SPINDLE,RH,4WD	1
2	0300118F1	MOTOR,4WD,7015,RH	1
3	17060047-1	HUB,4WD MOTOR,7015	1
4	13A-0812Z1	HEX C/S 1/2-20 X 1-1/2 UNF GR 8 Z&Y	5
5	0550010E	CLIMB PRO TIRE ASSEMBLY 4400-4	1
6	0550102	LUG NUT - 1/2-20	5
7	12A-0820	HEX C/S 1/2-13 X 2 1/2 UNC GR 8	4
8	50A-0848	COTTER PIN, 1/4 X 3 PLATED	1
9	0550216	SPINDLE NUT - 1"-14	1

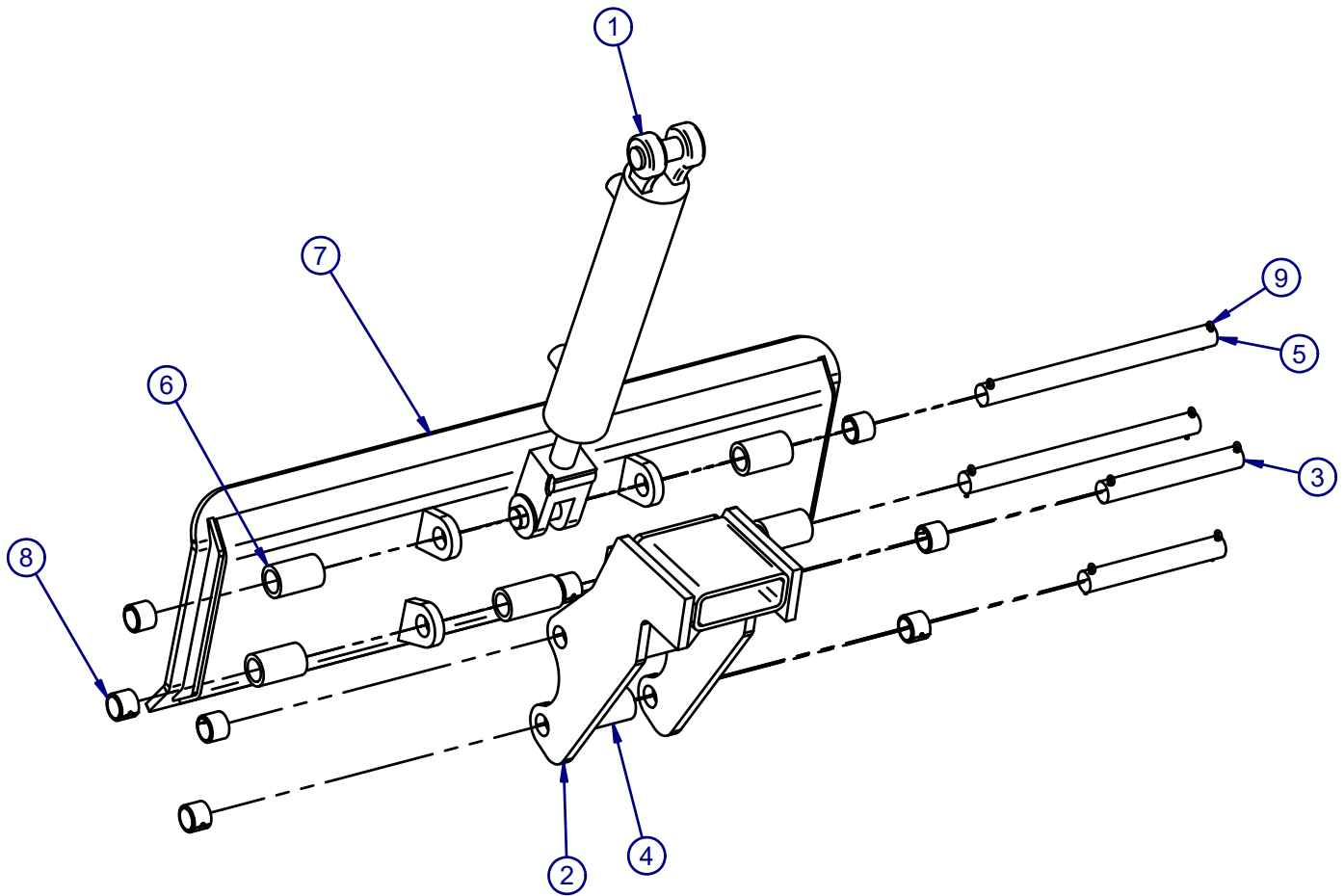
NOTE: DUE TO CONTINUOUS DESIGN IMPROVEMENTS CONSULT FACTORY PRIOR TO ORDERING 1-800-243-9335.

SPINDLE ASSEMBLY, LEFT FRONT



ITEM	PART	DESCRIPTION	QTY
1	17060006-1	WELDMNT,SPINDLE,LH,4WD	1
2	0300118F	MOTOR,4WD,7015,LH	1
3	17060047-1	HUB,4WD MOTOR,7015	1
4	13A-0812Z1	HEX C/S 1/2-20 X 1-1/2 UNF GR 8 Z&Y	5
5	0550102	LUG NUT - 1/2-20	5
6	0550010E	CLIMB PRO TIRE ASSEMBLY 4400-4	1
7	0150801	BUSHING,HARDENED,1"	1
8	12A-0820	HEX C/S 1/2-13 X 2 1/2 UNC GR 8	4
9	0550216	SPINDLE NUT - 1"-14	1
10	50A-0848	COTTER PIN, 1/4 X 3 PLATED	1

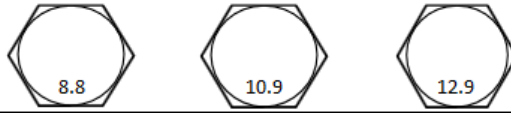
NOTE: DUE TO CONTINUOUS DESIGN IMPROVEMENTS CONSULT FACTORY PRIOR TO ORDERING 1-800-243-9335.



ITEM	PART	DESCRIPTION	QTY
1	0300106A	HYDRAULIC CYLINDER - 2X10	1
2		WELDMNT, BLADE MOUNT, 4WD/2WD	1
3	17070015-1	ROUND BAR, BLADE, FRONT	2
4	17070012-2	TUBING, 2-7/8" SPACER, BLADE	3
5	17070014-1	ROUND BAR, BLADE, REAR	2
6	17070013-2	TUBING, 2-1/4" SPACER, BLADE	4
7		WELDMNT, SCRAPE BLADE, 4WD/2WD	1
8	0150801	BUSHING, HARDENED, 1"	8
9	50A-0410	COTTER PIN, 1/8 X 2 PLATED	8

NOTE: DUE TO CONTINUOUS DESIGN IMPROVEMENTS CONSULT FACTORY PRIOR TO ORDERING 1-800-243-9335.

Torque Reference Chart Metric (ISO 898) - Inch (SAE J429)

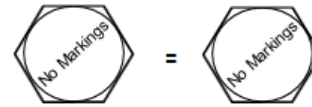


Metric (ISO 898)

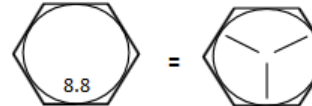
Class Tensile	M6-m16: 800 Mpa M20-M30: 830 Mpa 120,350 psi		1040 Mpa 150,880 psi		1220 Mpa 176,900 psi	
	Bolt Torque Specs in Foot Pounds or (Inch Pounds)					
Size/Thread	Dry	Oiled	Dry	Oiled	Dry	Oiled
M5 x 0.80	(54)	(41)	(78)	(59)	(91)	(68)
M6 x 1.00	(92)	(69)	(133)	(99)	(156)	(116)
M7 x 1.00	(156)	(116)	(222)	(167)	(260)	(195)
M8 x 1.25	(225)	(169)	(333)	(242)	(377)	(284)
M10 x 1.50	37	28	53	40	62	47
M12 x 1.75	65	49	93	69	108	81
M14 x 2.00	104	78	148	111	173	130
M16 x 2.00	161	121	230	172	269	202
M18 x 2.50	222	167	318	238	372	279
M20 x 2.50	314	235	449	337	525	394
M22 x 2.50	428	321	613	460	716	537
M24 x 3.00	543	407	776	582	908	681
M27 x 3.00	796	597	1139	854	1331	998
M30 x 3.50	1079	809	1543	1158	1804	1353
M33 x 3.50	1468	1101	2101	1576	2455	1842
M36 x 4.00	1886	1415	2699	2024	3154	2366

Minimum Strengths Metric Inch

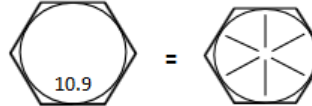
ISO 898 = **SAE J429**



Grade 4, 8 (4.6, 5.8) Tensile: 429MPa 60,900 psi = Grade 2 Tensile: 60,000 psi



Grade 8.8 Tensile: 830MPa 120,350 psi = Grade 5 Tensile: 120,000 psi



Grade 10.9 Tensile: 1040MPa 150,800 psi = Grade 8 Tensile: 150,000 psi



Grade 12.9 Tensile: 1220MPa 176,900 psi = Grade ASTM-A574 Tensile: 170,000 psi



Inch (SAE J429)

Class Tensile	Grade 5 120,000 psi		Grade 8 150,000 PSI		Grade ASTM-A574 170,000 PSI	
	Bolt Torque Specs in Foot Pounds or (Inch Pounds)					
Size/Thread	Dry	Oiled	Dry	Oiled	Dry	Oiled
1/4-20	(101)	(76)	(143)	(107)	(168)	(120)
1/4-28	(116)	(87)	(147)	(123)	(192)	(144)
5/16-18	(209)	(157)	(295)	(221)	(248)	(264)
5/16-24	(231)	(174)	(327)	(245)	(284)	(288)
3/8-16	(372)	(276)	44	33	51	38
3/8-24	(420)	(312)	49	37	58	43
7/16-14	49	37	70	52	81	61
7/16-20	55	41	78	58	91	68
1/2-13	75	57	106	80	124	93
1/2-20	85	64	120	90	140	105
5/8-11	150	113	212	159	238	179
5/8-18	170	127	240	180	270	202
3/4-10	267	200	376	282	423	317
3/4-16	297	223	420	315	472	354
7/8-9	429	322	606	455	682	511
7/8-14	474	355	669	502	752	564
1-8	644	483	909	681	1022	767
1-12	722	542	1020	765	1147	860

When using anti-seize, reduce the "Oiled" chart reading by 20% to properly torque. It is recommended to always lubricate and use oiled torque values.

Note: These charts are provided as a Reference only. Always refer to the manufactures recommended Torque settings for specific applications. J.P. Carlton has made every effort to insure the data provided in these charts is accurate.

BLANK SHEET

CARLTON
PARTS & SERVICE



CARLTON STANDS FOR QUALITY!!

Carlton's certified service department, along with its authorized dealer network, can help you keep your stump cutter or wood chipper working at its best. *Your authorized J.P. Carlton dealer knows your local conditions and is ready to deliver fast, professional, and expert service and/or parts, when you need it most.*

Visit our website to find a dealer near you.

www.stumpcutters.com

(800) 243-9335

(864) 578-9335

ATTENTION:

Please have the machine Model and Serial Number available when contacting one of our parts and service professionals.

STUMP CUTTERS

Model	Engine		Length		Width				Height		Weight	
	[hp]	[kw]	[in]	[cm]	Minimum		Maximum		[in]	[cm]	[lbs]	[kg]
					[in]	[cm]	[in]	[cm]				
900H	13	9.69	77	195.58	24	60.96	25	63.50	44	111.76	220	99.79
SP2000	27	20.13	80	203.20	29	73.66	29	73.66	54	137.16	700	317.51
SP5014	35	26.10	103	261.62	35	88.90	35	88.90	57	144.78	1650	748.43
	37	27.59									1650	748.43
SP5014 TRX	35	26.10	103	261.62	35	88.90	35	88.90	56	142.24	2215	1004.71
	37	27.59									2215	1004.71
SP6016	54	40.27	126	320.04	34.5	87.63	34.5	87.63	50	127	3200	1451.50
SP7015	74	55.18	140	355.60	35	88.90	52	132.08	76	193.04	4520	2050.24
SP7015 TRX	74	55.18	130	330.20	35	88.90	48	121.92	77	195.58	5820	2639.91
SP7015 TRX HD	74	55.18	151	383.54	35	88.90	48	121.92	77	195.58	6400	2902.99
SP8018 TRX	116	86.50	166	421.64	60	152.40	60	152.40	83	210.82	8600	3900.89
HURRICANE RS	140	104.40	200	508.00	72	182.88	72	182.88	96	243.84	10100	4581.28
	173	129.01									11380	5161.88
HURRICANE TRX	173	129.01	200	508.00	72	182.88	72	182.88	96	243.84	13520	6132.57
7500	74	55.18	180	457.20	84	213.36	84	213.36	70	177.8	6430	2916.60

WOOD CHIPPERS

Model	Engine		Length		Width				Height		Weight	
	[hp]	[kw]	[in]	[cm]	Minimum		Maximum		[in]	[cm]	[lbs]	[kg]
					[in]	[cm]	[in]	[cm]				
660	27	20.13	124	314.96	56	142.24	56	142.24	87	220.98	1740	789.25
1260	35	26.10	132	335.28	68.5	173.99	68.5	173.99	89	226.06	2620	1188.41
	37	27.59									2620	1188.41
1290	35	26.10	144	365.76	68.5	173.99	68.5	173.99	89	226.06	2930	1329.03
	37	27.59									2930	1329.03
	54	40.27									3700	1678.29
1712	74	55.18	198	502.92	70	177.80	70	177.80	101	256.54	6500	2948.35
	80	59.66									5800	2630.84
	135	100.67									6920	3138.86
2012	116	86.50	196	497.84	80	203.20	80	203.20	104	264.16	7760	3519.88
	135	100.67									7000	3519.88
	140	104.40									7760	3519.88
2018	173	129.01	240	609.60	88	223.52	88	223.52	108	274.32	12400	5624.55
1712 APACHE	74	55.18	198	502.92	70	177.80	70	177.80	101	256.54	6920	3138.86
	135	100.67									6820	3093.50
2015 APACHE	116	86.50	244	619.76	90.5	229.87	90.5	229.87	108	274.32	9050	4105.01
	140	104.40									9900	4490.56
	180	134.23									8800	3991.61
2518 APACHE	140	104.40	245	622.30	90	228.60	90	228.60	114	289.56	11300	5125.59
	173	129.01									11300	5125.59
	180	134.23									10300	4672.00

MULTIPLE COLOR OPTIONS AVAILABLE