

Parts Book

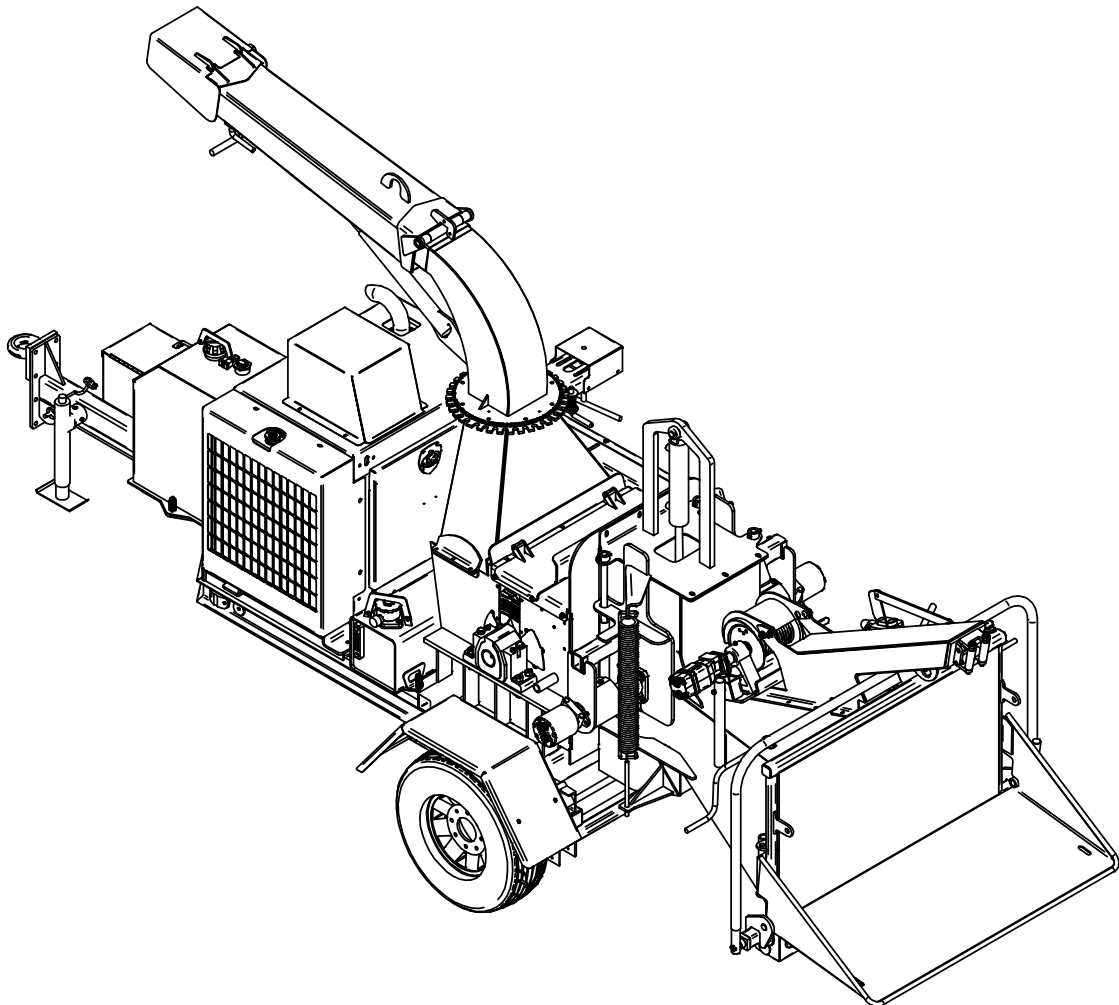
Carlton
PROFESSIONAL
TREE EQUIPMENT

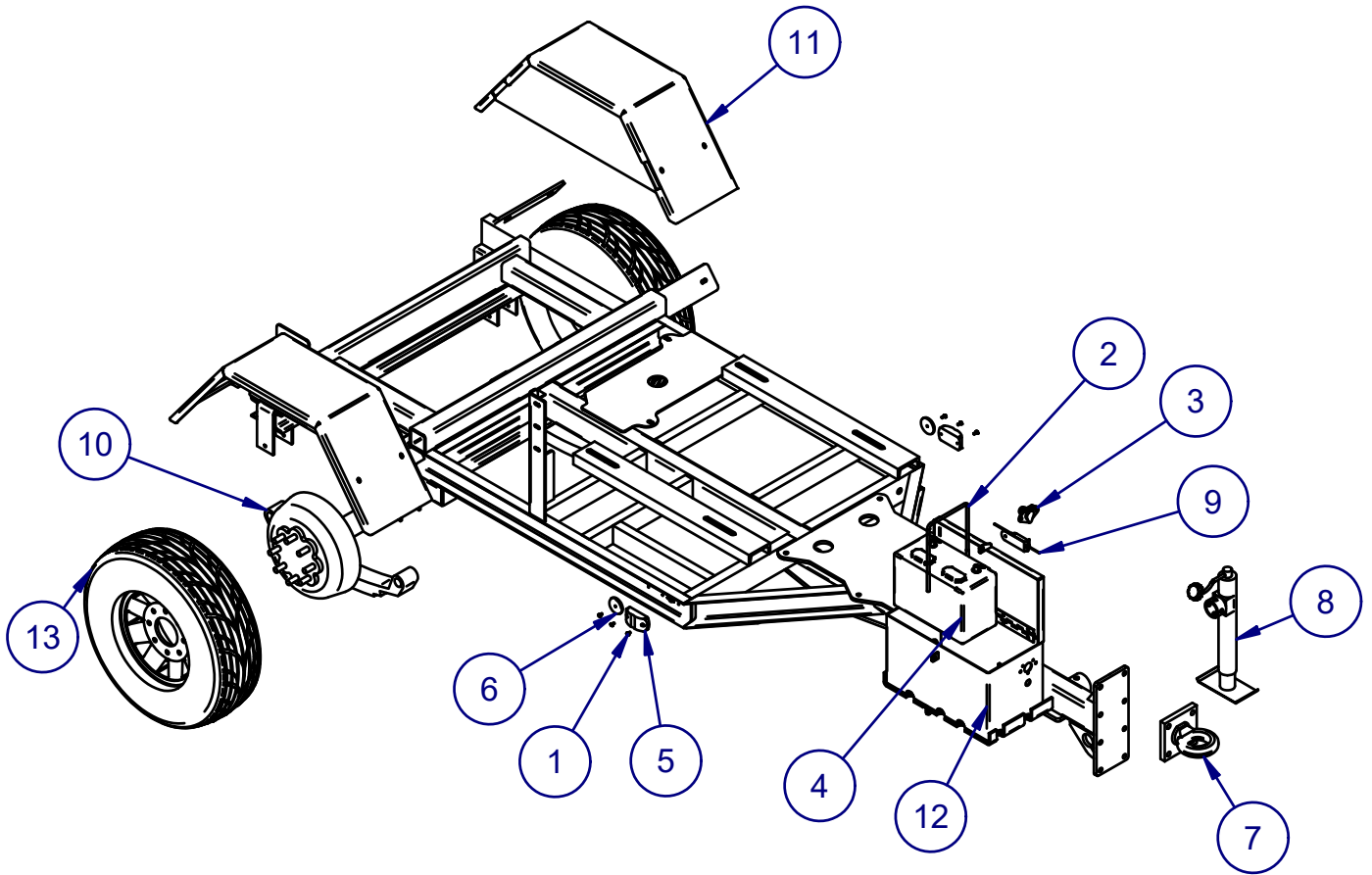


Carlton

J.P. Carlton Company
Div. D.A.F. Inc.
121 John Dodd Road
Spartanburg, SC 29303
Ph. (864) 578-9335
Fax (864) 578-0210
www.stumpcutters.com

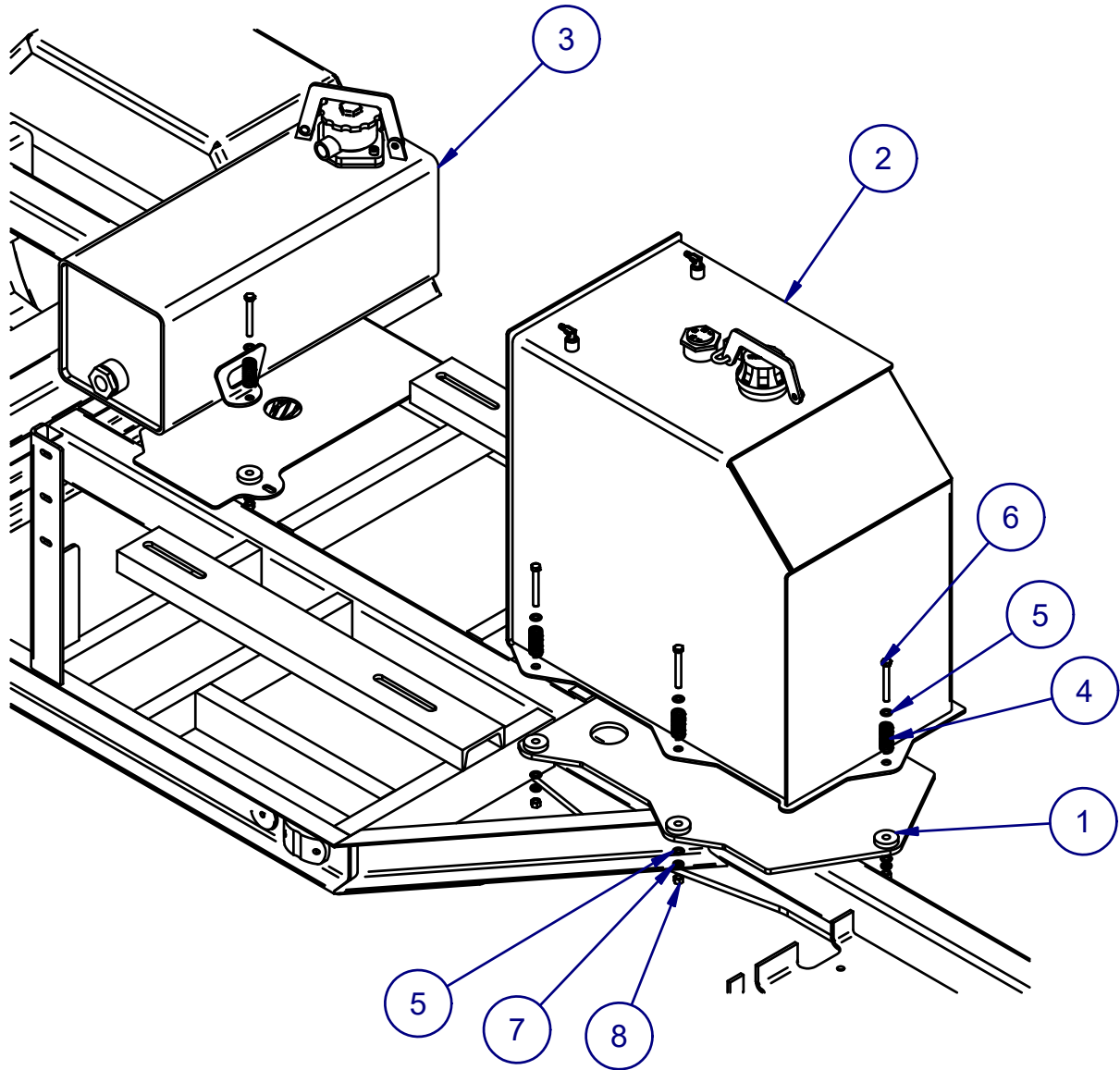
1712 APACHE
DRUM CHIPPER





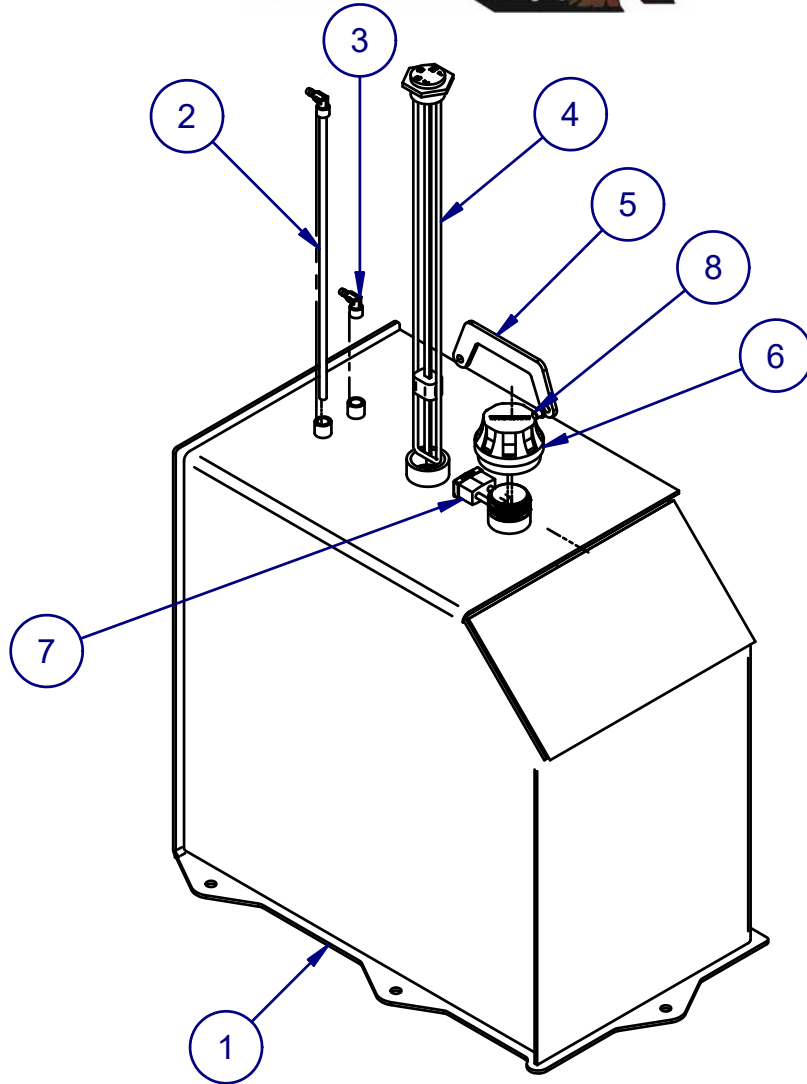
ITEM	PART	TITLE	QTY
1	0150414	RIVET-ALUMINUM W STEEL	6
2	0150508I	BATTERY BRACKET 3/8 X 7 X 10.5	1
3	035000IB	6-WAY CONNECTOR PLUG - 11-605	1
4	0350032A	BATTERY HP3IE 950CCA	1
5	0350054	Marker Light- 4" Amber Oval	2
6	0350057	REFLECTOR- AMBER 2 3/8"	2
7	055000IB	PINTLE, 2 1/2" W/4 HOLE BRKT	1
8	0550004H	Jack-2K Top Mount- 6" Chipper	1
9	0550050F	TEKONSHA BREAKAWAY SWITCH	1
10	0550250P	AXLE, LEAF SPRING,8000 lb	1
11	21110034	WELDMNT,ALUMINUM FENDER	2
12	21220045	WELDMNT,BATTERYBOX/FRONT	1
13	RIM AND	215/75R17.5	2

FUNCTION GROUP	
1 FRAME AND TANKS	
BUSINESS LINE	
CHIPPERS	
OWNER DOMAIN J.P. CARLTON COMPANY DIV. DAF INC.	
SERIAL NUMBERS 1J9PF0112K1167218 AND UP	
DESCRIPTION	ISSUE
AXLE, TIRES, BATTERY, LIGHTS	R2



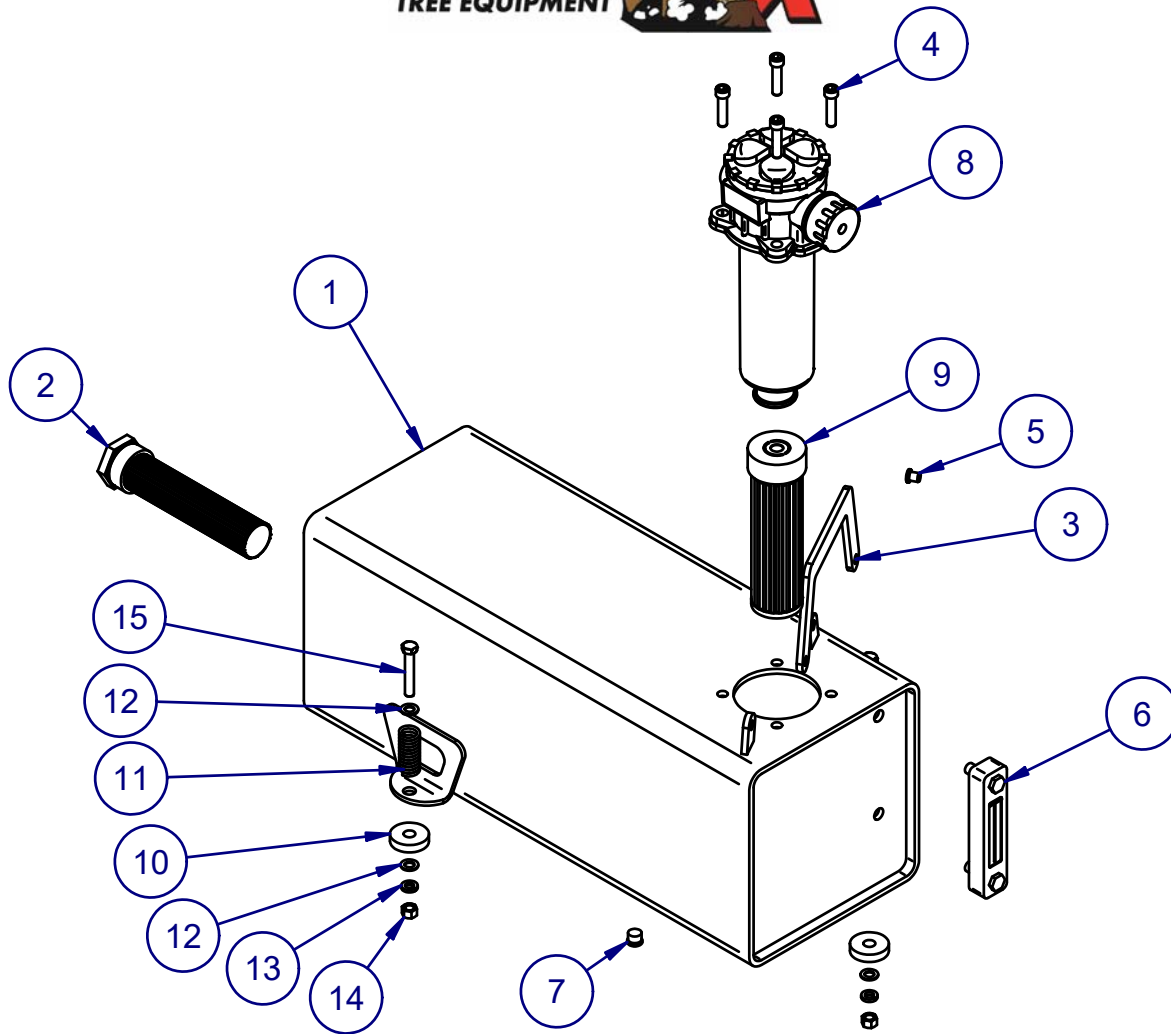
ITEM	PART	TITLE	QTY
1	0400236	ISOLATOR,TANKS	7
2	21510006	ASSY,FUEL TANK,40 GALLON	1
3	21110005	ASSEMBLY,HYDRAULIC TANK	1
4	21840064	SPRING,FEED CONTROL LINKAGE	7
5	31A-06	FLAT WASHER, 3/8 USS GRD NARROW 5	14
6	12A-0624Z1	HEX C/S 3/8-16 x 3 UNC GR 8 Z&Y	7
7	30A-06	LOCKWASHER, 3/8" USS GR8	7
8	20A-06	NUT,HEX,3/8-16 UNC GR8	7

FUNCTION GROUP	
1 FRAME AND TANKS	
BUSINESS LINE	
CHIPPERS	
OWNER DOMAIN J.P. CARLTON COMPANY DIV. DAF INC.	
SERIAL NUMBERS 1J9PF0112K1167218 AND UP	
DESCRIPTION	ISSUE
HYDRAULIC AND FUEL TANK INST.	R2



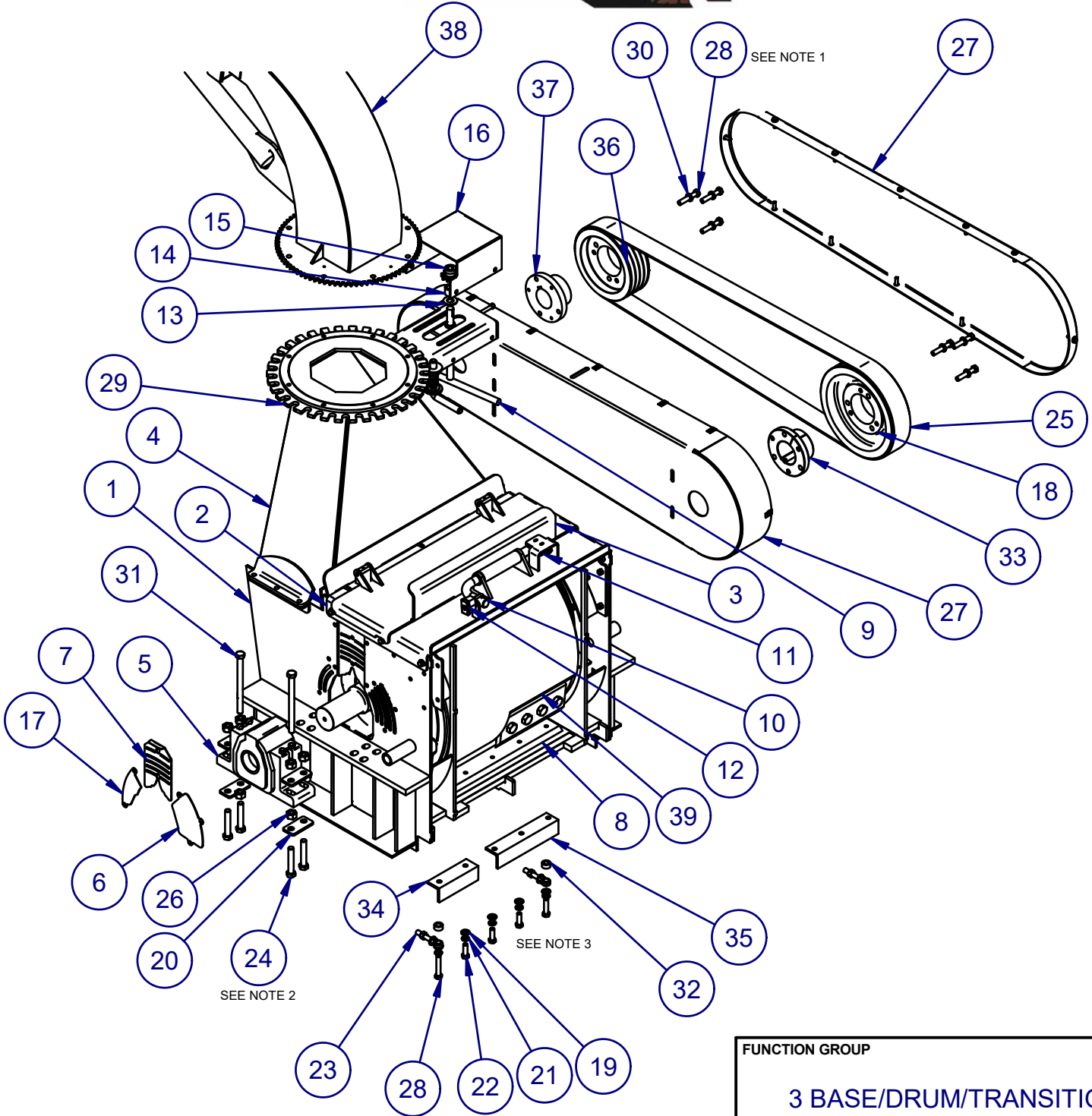
ITEM	PART	TITLE	QTY
1	21510071	WELDMENT,FUEL TANK,40 GALLON	1
2	21210088	WELDMENT,PICK-UP TUBE	1
3	0300253	3/8MP-5/16BARB - 4290-5-6	1
4	0200210C	GAUGE, SPIRAL FUEL, 24"	1
5	21210156	BRACKET, VANDADLISM, FUEL TANK	1
6	0200006A	PLASTIC GAS TANK CAP 2008	1
7	0150608	MASTER LOCK	1
8	.375	PIN, MACHINE 3/8"X13/32 LONG	1

FUNCTION GROUP	
1 FRAME AND TANKS	
BUSINESS LINE	
CHIPPERS	
OWNER DOMAIN	
J.P. CARLTON COMPANY DIV. DAF INC.	
SERIAL NUMBERS	
1J9PF0112K1167218 AND UP	
DESCRIPTION	ISSUE
ASSY, FUEL TANK	R2



ITEM	PART	DESCRIPTION	QTY
1	21110006-5	WELDMENT, HYDRAULIC TANK	1
2	0300169	STRAINER- TANK MOUNTED LTM-15	1
3	21210154-2	BRACKET, VANDADLISM, HYDRUALIC TANK	1
4	13D-0612	SHCS 3/8-24 X 1-1/2 NC GR 8	4
5	.375 machined pin	PIN, MACHINE 3/8"X1 3/32 LONG	1
6	0300266A	HYDRAULIC SITE GAUGE W/TEMP	1
7	0150638	SAE MAGNETIC PLUG, 7/16-20	1
8	0300135I	Hydraulic InTank Filter MP	1
9	0300135J	HYDRAILIC IN TANK FILTER ELEMENT	1
10	0400236	ISOLATOR, TANKS	2
11	21840064-1	SPRING, FEED CONTROL LINKAGE	2
12	31A-06	FLAT WASHER, 3/8 USS GRD NARROW 5	4
13	30A-06	LOCKWASHER, 3/8" USS GR8	2
14	20A-06	NUT, HEX, 3/8-16 UNC GR8	2
15	12A-0618	HEX C/S 3/8-16 x 2-1/4 UNC GR 8	2

FUNCTION GROUP	
1 FRAME AND TANKS	
BUSINESS LINE	
CHIPPERS	
OWNER DOMAIN	
J.P. CARLTON COMPANY DIV. DAF INC.	
SERIAL NUMBERS	
1J9PF011591167051	
DESCRIPTION	ISSUE
ASSY, HYDRAULIC TANK	R4



SEE NOTE 1

SEE NOTE 3

SEE NOTE 2

NOTES:

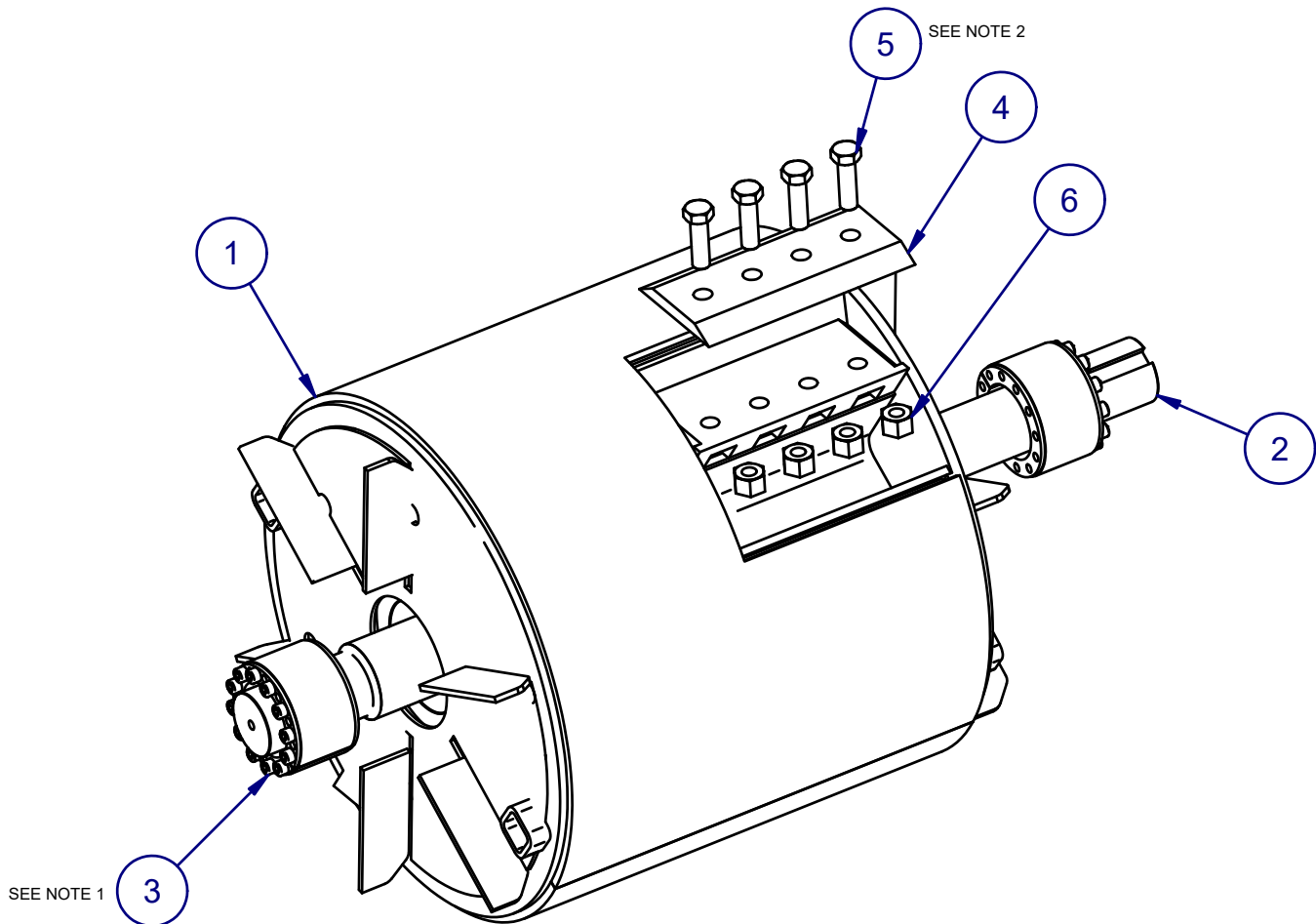
1. TORQUE 75 FT/LBS AND APPLY RED LOCTITE 277.
2. TORQUE TO 250 FT/LBS.
3. TORQUE 75 FT/LBS.

FUNCTION GROUP	
3 BASE/DRUM/TRANSITION	
BUSINESS LINE	
CHIPPERS	
OWNER DOMAIN	
J.P. CARLTON COMPANY DIV. DAF INC.	
SERIAL NUMBERS	
IJ9PF0112K1167218 AND UP	
DESCRIPTION	ISSUE
BASE ASSEMBLY	R3



ITEM	PART	TITLE	QTY	ITEM	PART	TITLE	QTY
1	21330091	WELDMENT,BASE	1	21	30A-08ZI	LOCK WASHER,1/2" USS GR8 Z&Y	5
2	21530004	WELDMENT,DOOR MOUNT	1	22	12A-0812ZI	HEX C/S 1/2-13 x 1-1/2 UNC GR 8 Z&Y	3
3	21530005	WELDMENT,DOOR	1	23	0150630A	1/2-13 x 3 1/2" Rod End	2
4	21530008	WELDMENT,TRANS	1	24	12A-1028ZI	HEX C/S 5/8-11 x 3-1/2 UNC GR 8 Z&Y	8
5	0500170	BEARING,DRUM,USAF	2	25	0400152	BELT,15 DRUM	1
6	21530062	COVER,VENT,FRT	2	26	0900129	CHIPPER KNIFE BOLT NUT - 5/8"	12
7	21530061	PLATE,VENT SLIDE	2	27	21330094	BELT GUARD ASSEMBLY	1
8	21530037	ANVIL	1	28	12A-0822ZI	HEX C/S 1/2-13 x 2 3/4 UNC GR 5	7
9	21230116	WELDMENT,DISCHARGE ADJUST,HANDLE	1	29	21260043	WELDMENT,DISCHARGE ADJUST SPROCKET	1
10	21530012	WELDMENT,LOCK PIN,DOOR	1	30	30A-08	LOCKWASHER 1/2"	6
11	0350130	SWITCH,LIMIT	1	31	12A-1064ZI	HEX C/S 5/8-11 x 8 UNC GR 8 Z & Y	4
12	0150608	MASTER LOCK	1	32	21530112	SPACER,ANVIL MOUNTING	2
13	31A-12ZI	FLAT WASHER 3/4" USS GR8 NARROW Z&YL	1	33	0250183	Bushing - E 2 15/16"	1
14	21230080	BUSHING,DISCHARGE ADJUST	1	34	21530114	ANGLE,ANVIL ADJUST MOUNT,SMALL	1
15	21230127	SPROCKET, DISCHARGE ADJUST	1	35	21530113	ANGLE,ANVIL ADJUST MOUNT,LARGE	1
16	21230138	WELDMENT,DISCHARGE ADJUST COVER	1	36	0250336	SHEAVE,ENGINE,4/5V9.25	1
17	21530087	COVER,VENT,REAR	2	37	0250183E	BUSHING,QD INTERCHANGEABLE, E 2-1/2"	1
18	0250337	SHEAVE,DRUM,4-5V11.8	1	38	20960001	ASSEMBLY,DISCHARGE SYSTEM	1
19	31A-08ZI	FLAT WASHER 1/2 USS GR 8 NARROW Z&Y	5	39	21530003	ASSY,DRUM	1
20	21630022	WASHER,DRUM BEARING	8				

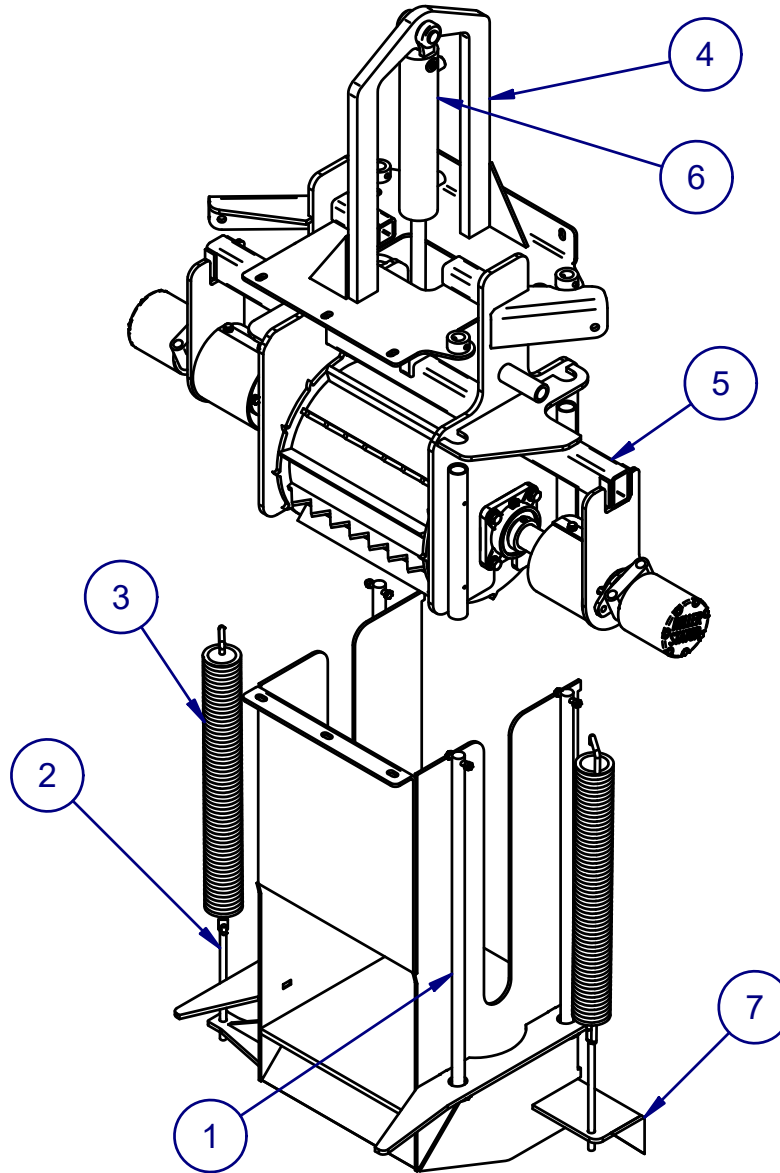
FUNCTION GROUP	
3 BASE/DRUM/TRANSITION	
BUSINESS LINE	
CHIPPERS	
OWNER DOMAIN	
J.P. CARLTON COMPANY DIV. DAF INC.	
SERIAL NUMBERS	
1J9PF0112K1167218 AND UP	
DESCRIPTION	ISSUE
BASE ASSEMBLY	R3



NOTES:
1. TORQUE 143 FT/LBS AND APPLY RED LOCTITE 277.
2. TORQUE TO 230 FT/LBS.

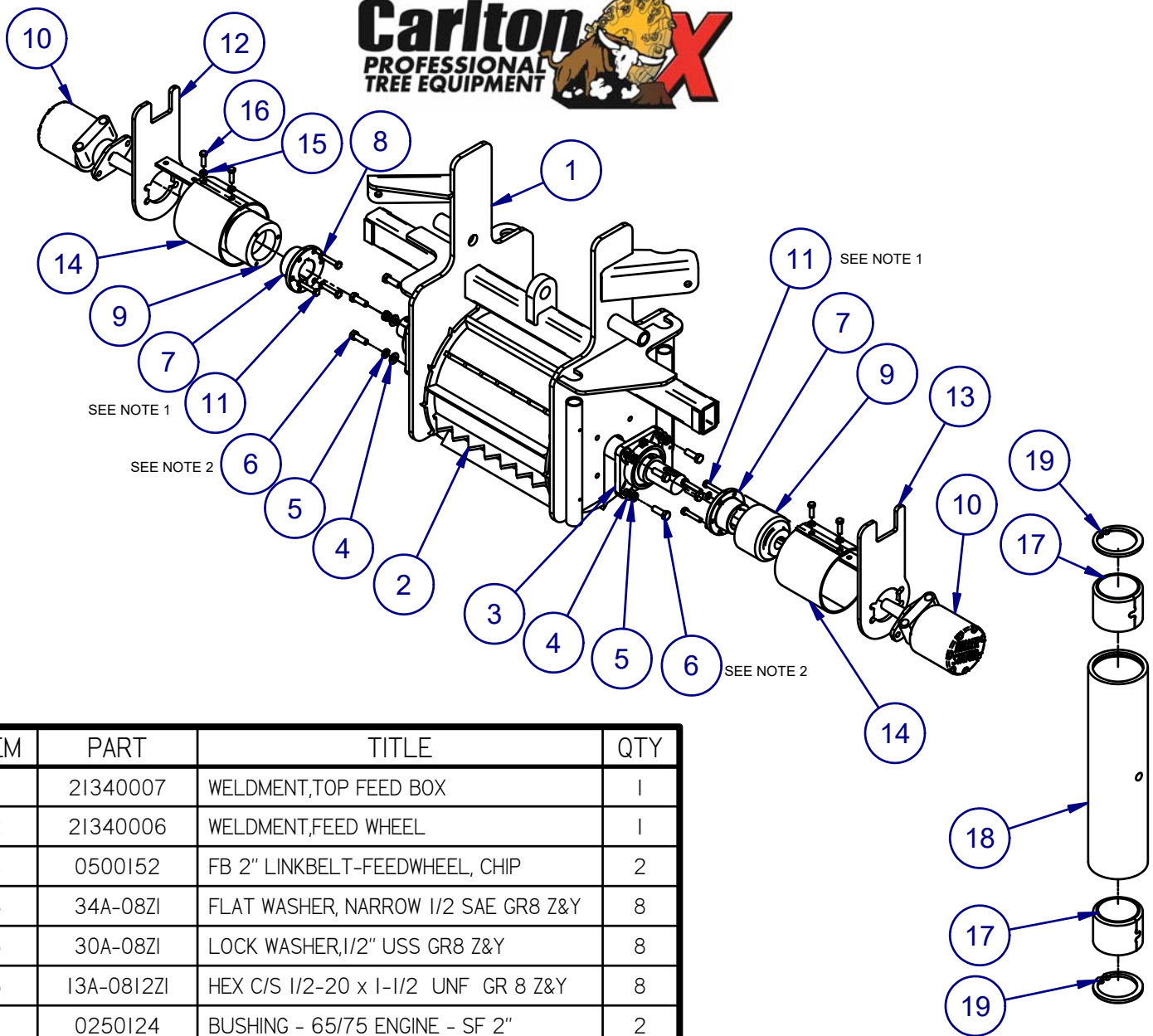
ITEM	PART	TITLE	QTY
1	21530011	WELDMNT,DRUM,2 KNIVES	1
2	21530050	SHAFT,DRUM	1
3	0250218A	BUSHING,B-LOC,3-7/16	2
4	0900144	KNIFE,10.5X5.5X.625	2
5	12A-1220Z1	HEX C/S 3/4-10 x 2-1/2 UNC GR8 Z&Y	8
6	0900132	3/4" SECURITY LOCK NUTS	8

FUNCTION GROUP	
3 BASE/DRUM/TRANSITION	
BUSINESS LINE	
CHIPPERS	
OWNER DOMAIN	
J.P. CARLTON COMPANY DIV. DAF INC.	
SERIAL NUMBERS	
1J9PF0112K1167218 AND UP	
DESCRIPTION	ISSUE
DRUM	R3



ITEM	PART	TITLE	QTY
1	21340022	ROD,FEED SLIDE	3
2	0900104	SPRING TIGHTENER FOR 250	2
3	0900110C	SPRING,LIFT	2
4	21340008	WELDMENT,LIFT CYLINDER	1
5	21340002	ASSY,TOP FEED	1
6	0300105F	Hydraulic Cylinder - 3x12	1
7	21340005	WELDMENT,BTM FEED	1

FUNCTION GROUP	
4 FEED SYSTEM	
BUSINESS LINE	
CHIPPERS	
OWNER DOMAIN	
J.P. CARLTON COMPANY DIV. DAF INC.	
SERIAL NUMBERS	
1J9PF0112K1167218 AND UP	
DESCRIPTION	ISSUE
ASSY,FEED SYSTEM	R3

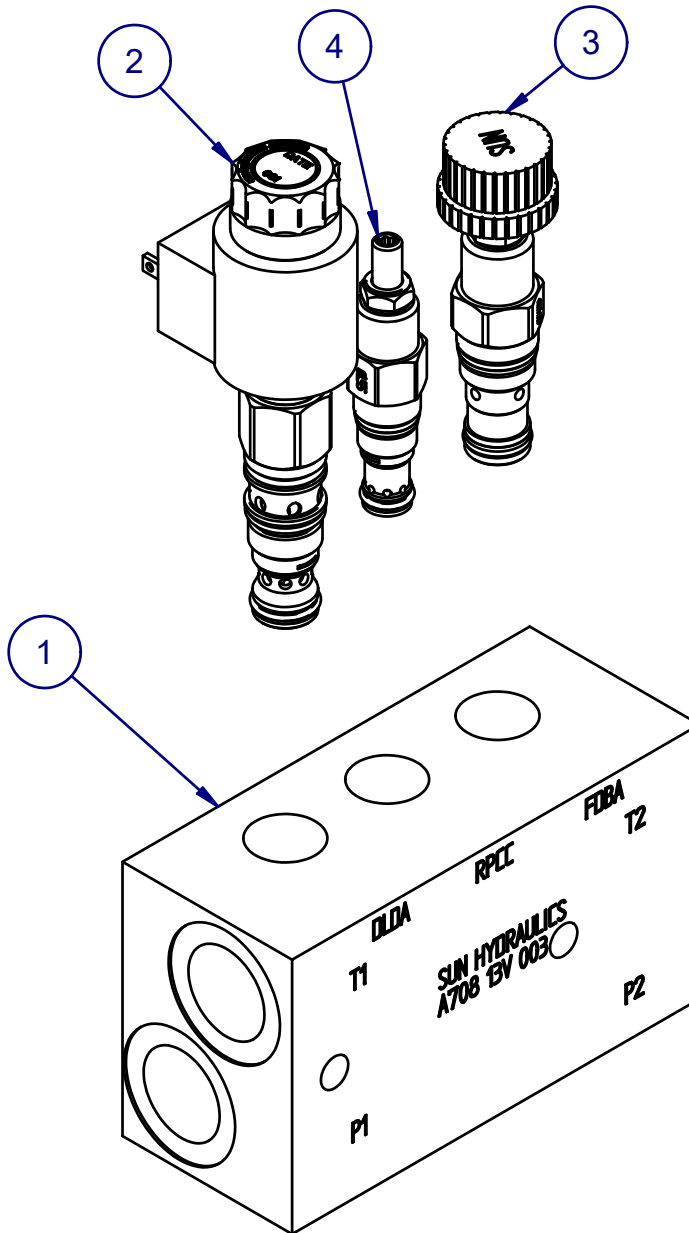


ITEM	PART	TITLE	QTY
1	21340007	WELDMNT, TOP FEED BOX	1
2	21340006	WELDMNT, FEED WHEEL	1
3	0500152	FB 2" LINKBELT-FEEDWHEEL, CHIP	2
4	34A-08ZI	FLAT WASHER, NARROW 1/2 SAE GR8 Z&Y	8
5	30A-08ZI	LOCK WASHER, 1/2" USS GR8 Z&Y	8
6	13A-0812ZI	HEX C/S 1/2-20 x 1-1/2 UNF GR 8 Z&Y	8
7	0250124	BUSHING - 65/75 ENGINE - SF 2"	2
8	30-06	LOCK WASHER, 3/8"	6
9	1200188	COUPLER, FEED WHEEL HUB	2
10	0300038RI	2512 Top Feed Mtr 2015 btm	2
11	12A-0616	HEX C/S 3/8-16 x 2 UNC GR 8	6
12	21340010	WELDMNT, FEED WHEEL MOTOR STOP, LH	1
13	21340009	WELDMNT, FEED WHEEL MOTOR STOP, RH	1
14	21240091	COVER, PVC, FEED WHEEL COUPLER	2
15	30A-06	LOCKWASHER, 3/8" USS GR8	4
16	12A-0610ZI	HEX C/S 3/8-16 x 1-1/4" UNC GR 8 ZINC	4
17	0150801	BUSHING, HARDENED, 1"	2
18	20540025	TUBING, FEED SLIDE	1
19	52F-08	SNAP RING, 1"	2

NOTES:

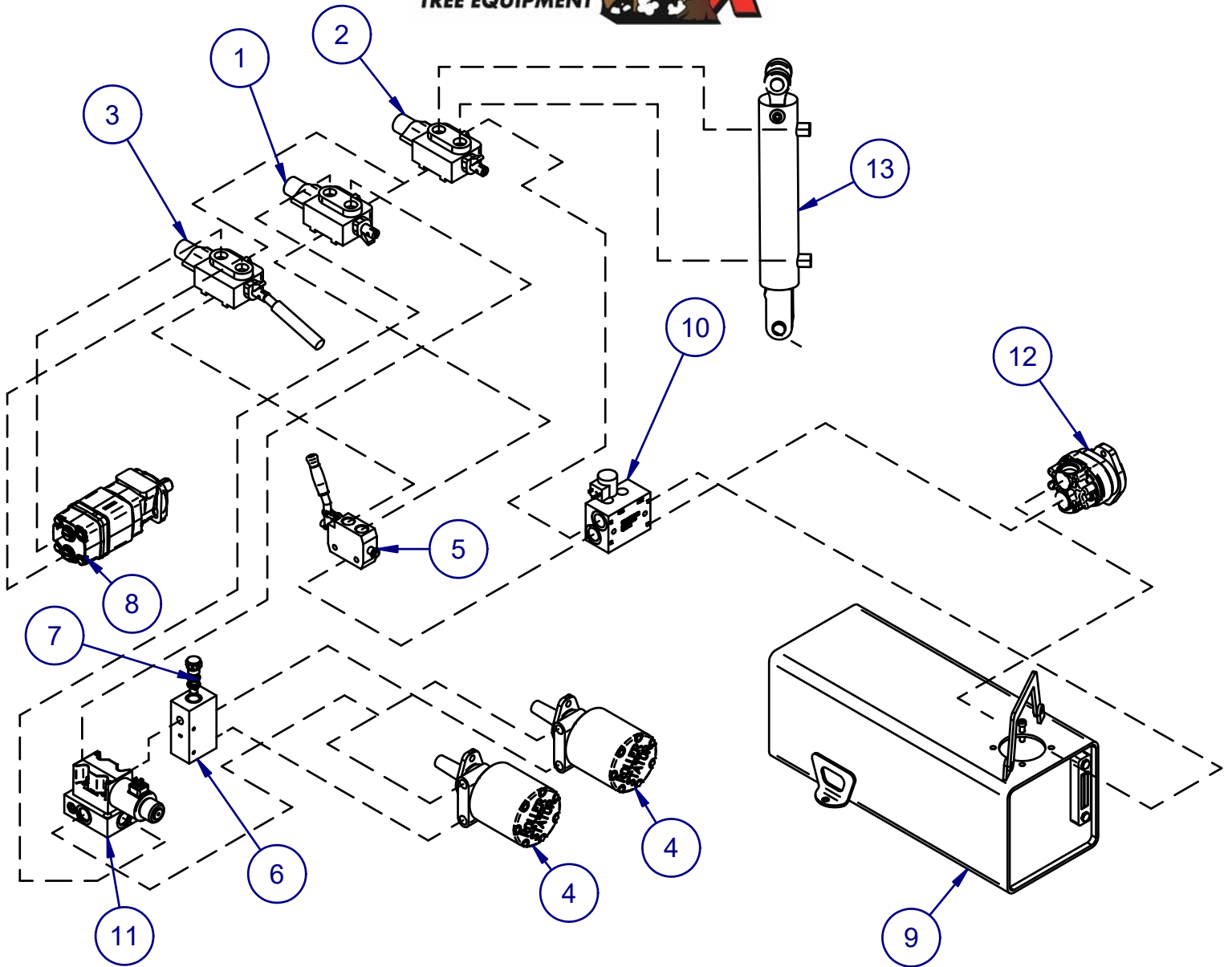
1. ITEM(S) #11 TO BE TORQUED TO 47 FT/LBS.
2. APPLY RED LOCTITE 277 TYP FOR ITEM #6 TORQUED TO 215 FT/LBS.

FUNCTION GROUP	
4 FEED SYSTEM	
BUSINESS LINE	
CHIPPERS	
OWNER DOMAIN	
J.P. CARLTON COMPANY DIV. DAF INC.	
SERIAL NUMBERS	
1J9PF0112K1167218 AND UP	
DESCRIPTION	ISSUE
TOP FEED ASSEMBLY	R3



ITEM	PART	TITLE	QTY
1	0300173	AUTOFEED BODY 6" CHIPPER	1
2	0300121B	SOLENOID STOP VALVE	1
3	0300121C	Flow Control Valve- FDBA-KAN	1
4	0300121D	PISTON RELIEF VALVE- RPCC-LAN	1

FUNCTION GROUP	
4 FEED SYSTEM	
BUSINESS LINE	
CHIPPERS	
OWNER DOMAIN	
J.P. CARLTON COMPANY DIV. DAF INC.	
SERIAL NUMBERS	
1J9PF112E1167549	
DESCRIPTION	ISSUE
ASSEMBLY FEED CONTROL VALVE BLOCK	R2

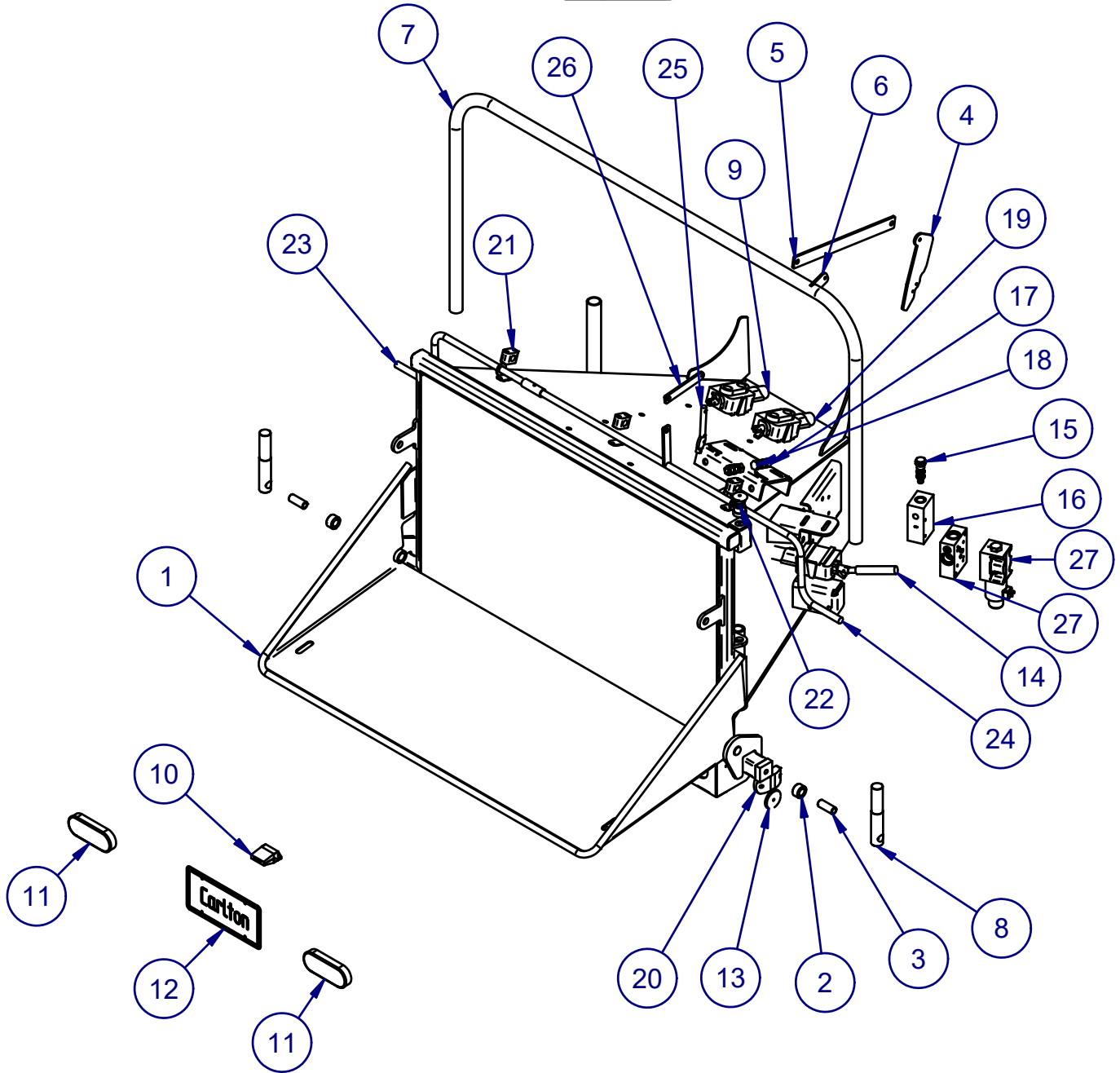


FUNCTION GROUP	
4 FEED SYSTEM	
BUSINESS LINE	
CHIPPERS	
OWNER DOMAIN	
J.P. CARLTON COMPANY DIV. DAF INC.	
SERIAL NUMBERS	
1J9PF0112K1167218 AND UP	
DESCRIPTION	ISSUE
HYDRAULIC SCHEMATIC 1712 DRUM	R3



ITEM	PART	TITLE	QTY
1	0300035	Energy Feed Wheel Valve	1
2	0300036	Energy Lift Cylinder Valve	1
3	0300037	Energy Winch Valve	1
4	0300038RI	2512 Top Feed Mtr 2015 btm	2
5	0300037I	Energy-Selector Valve	1
6	0300172RI	DIVIDER BODY	1
7	0300172RIA	CARTRIDGE, FLOW CONTROL,	1
8	0300040	2512HD Winch Motor White	1
9	21110005	ASSEMBLY, HYDRAULIC TANK	1
10	0300173	AUTOFEED BLOCK	1
11	0300125	AutoReversing Manifold Assy	1
12	0300175	Gear Pump	1
13	0300105F	Hydraulic Cylinder - 3x12	1

FUNCTION GROUP	
4 FEED SYSTEM	
BUSINESS LINE	
CHIPPERS	
OWNER DOMAIN J.P. CARLTON COMPANY DIV. DAF INC.	
SERIAL NUMBERS 1J9PF0112K1167218 AND UP	
DESCRIPTION	ISSUE
HYDRAULIC SCHEMATIC 1712 DRUM	R3

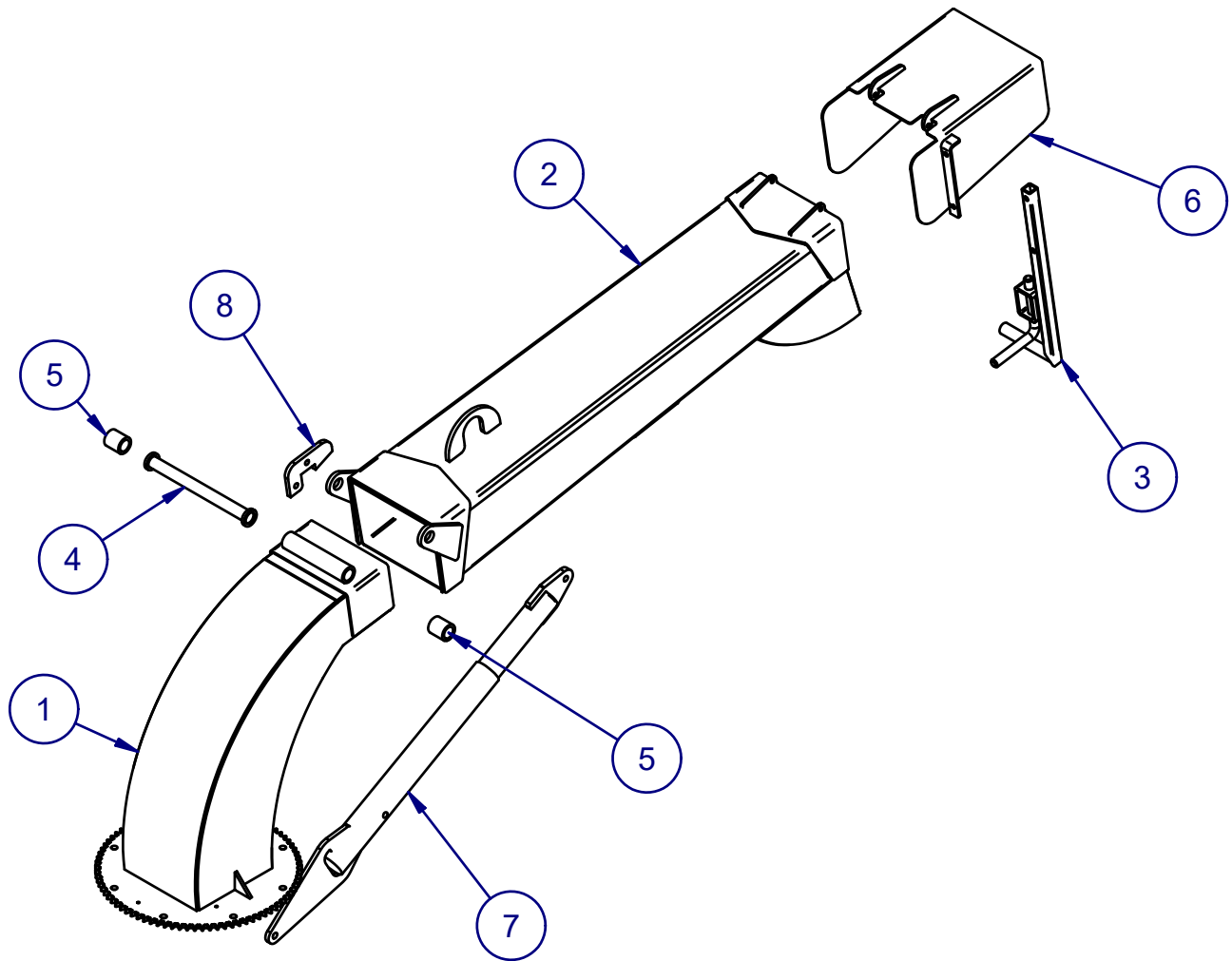


FUNCTION GROUP	
5 INFEED SYSTEM	
BUSINESS LINE	
CHIPPERS	
OWNER DOMAIN J.P. CARLTON COMPANY DIV. DAF INC.	
SERIAL NUMBERS 1J9PF0112K1167218 AND UP	
DESCRIPTION	ISSUE
INFEED SYSTEM	R4



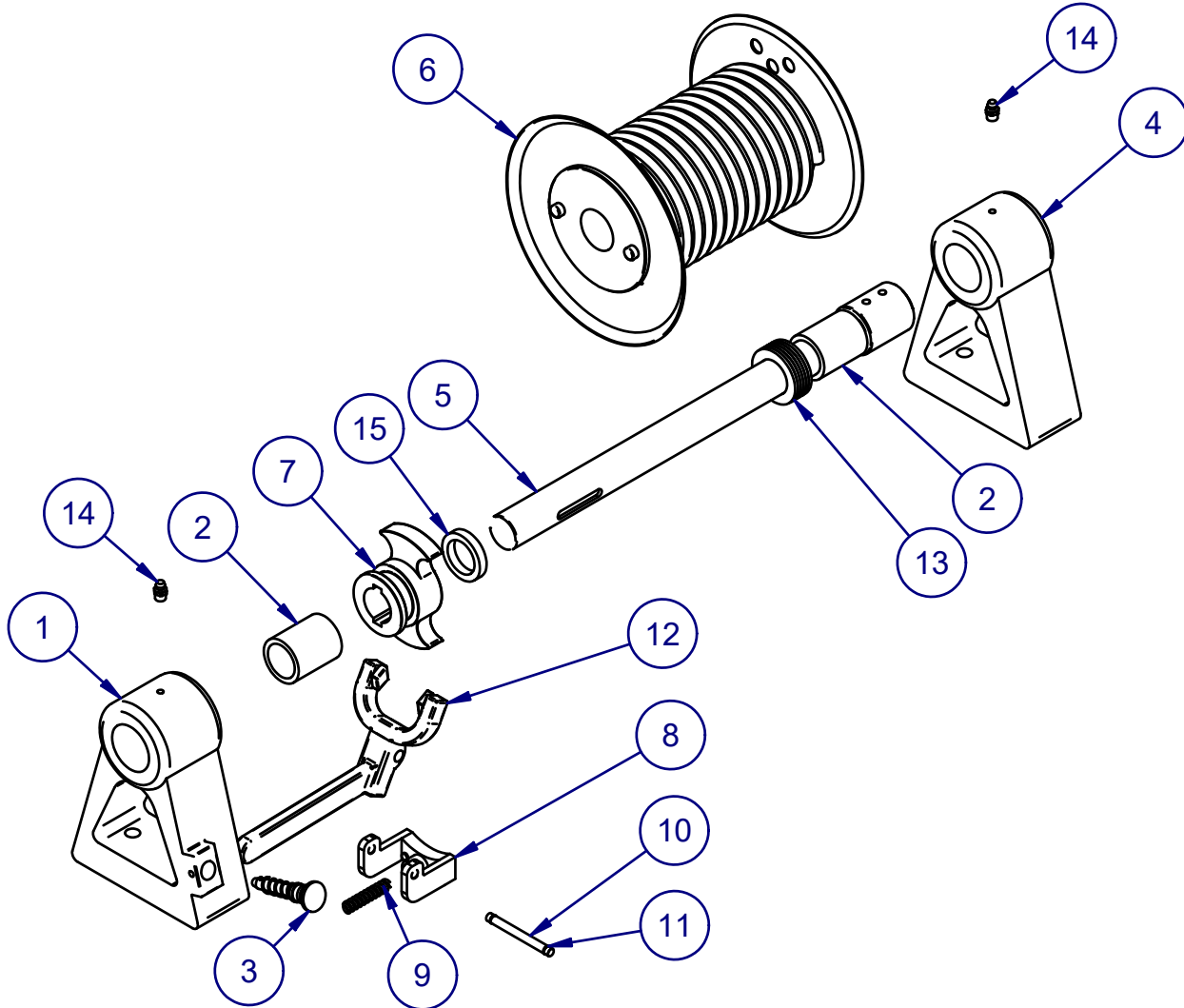
ITEM	PART	TITLE	QTY
1	21150002	WELDMENT,INFEED	1
2	21250099	SPACER,CONTROL ARM	2
3	21250098	BUSHING,CONTROL BAR	2
4	21250092	BRACKET,CONTROL BAR LINKAGE	1
5	21250203	FLATBAR,CONTROL LINKAGE	1
6	21250093	MOUNT,FEED WHEEL CONTROL,LINKAGE	1
7	20950036	TUBING,CONTROL BAR	1
8	21250097	MOUNT,CONTROL BAR,64"	2
9	0300036	Energy Lift Cylinder Valve	1
10	0350008B	TAG LIGHT	1
11	0350008A1	TAIL LIGHT - 12" CHIPPER	2
12	TAG	JP CARLTON LICENSE PLATE	1
13	0350056	REFLECTOR - RED 2 3/8"	2
14	0300037	Energy Winch Valve	1
15	0300172RI	CARTRIDGE,FLOW CONTROL,HYDRAULIC	1
16	0300172RI	DIVIDER BODY	1
17	20A-10ZI	NUT,HEX,5/8-11 UNC GR 8 Z&Y	4
18	10A-1016ZI	BOLT,HEX C/S 5/8-11 x 2 UNC GR8 Z&Y	2
19	0300035	Energy Feed Wheel Valve	1
20	0350055	Marker Light- 4" Red Oval	2
21	0300300A	HOSE CLAMP	3
22	0350058A	E-STOP- 1 NO 1 NC- KUBOTA 6"	1
23	21170005	WELDMENT,FEED LIFT CONTROL BAR,RH	1
24	21170006	WELDMENT,FEED LIFT CONTROL ARM,LH	1
25	21250170	HANDLE,VALVE	1
26	21250148	FLATBAR,FEED LIFT CONTROL BAR	1
27	0300125	AutoReversing Manifold Assy	1

FUNCTION GROUP	
5 INFEED SYSTEM	
BUSINESS LINE	
CHIPPERS	
OWNER DOMAIN J.P. CARLTON COMPANY DIV. DAF INC.	
SERIAL NUMBERS 1J9PF0112K1167218 AND UP	
DESCRIPTION	ISSUE
INFEED SYSTEM	R4



ITEM	PART	TITLE	QTY
1	20960002	WELDMENT,DISCHARGE ELBOW	1
2	20960003	WELDMENT,DICHARGE NECK	1
3	21260037	WELDMENT,DISCHARGE ADJUST HANDLE	1
4	21260032	WELDMENT,DISCHARGE ELBOW/DN ROD	1
5	21260036	BUSHING,DISCHARGE	2
6	21260003	WELDMENT,DISCHARGE CHIP REFLECTOR	1
7	21260021	WELDMENT,REAR JACK	1
8	21260024	STOP,DISCHARGE ELBOW	1

FUNCTION GROUP	
6 DISCHARGE SYSTEM	
BUSINESS LINE	
CHIPPERS	
OWNER DOMAIN	
J.P. CARLTON COMPANY DIV. DAF INC.	
SERIAL NUMBERS	
1J9PF0112K1167218 AND UP	
DESCRIPTION	ISSUE
DISCHARGE SYSTEM	R3



ITEM	PART	TITLE	QTY
1	030004IB	Winch Drum Bearing Tower, W/Brk	1
2	030004IBI	Bushing- Winch Bearing Tower	2
3	030004IC1	Winch Drum- Pin Kit	1
4	030004IA	Winch Drum Bearing Tower	1
5	030004ID2	Drum Shaft	1
6	030004IDI	Drum With Bushing	1
7	030004IF	Winch Drum Clutch	1
8	030004ID	Winch Drum Brake	1
9	030004IE	Winch Drum Brake Spring	1
10	030004ICIA	Winch Drum- Brake Pin	1
11	030004IE1	Retaining Ring	2
12	030004IC	Winch Drum Clutch Lever	1
13	030004IE2	WASHER,THRUST,WINCH	6
14	0150625	GREASE FITTING, 1/8 NPT STRT.	2
15	030004ID3	SPACER,DRUM SHAFT,WINCH	1

FUNCTION GROUP	
7 OPTIONS	
BUSINESS LINE	
CHIPPERS	
OWNER DOMAIN	
J.P. CARLTON COMPANY DIV. DAF INC.	
SERIAL NUMBERS	
DESCRIPTION	ISSUE
WINCH ASSEMBLY	R3