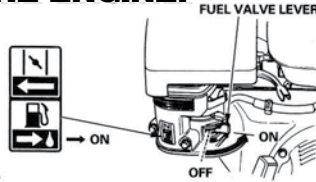
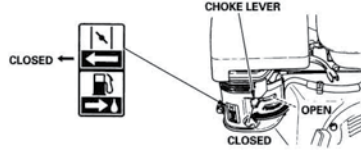


3) STARTING THE ENGINE:

a. Move the fuel valve lever to ON position.

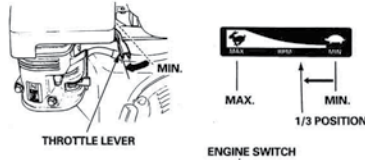


b. To start a cold engine, move the choke lever or choke rod (applicable types) to the CLOSED position.

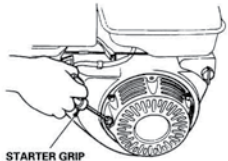
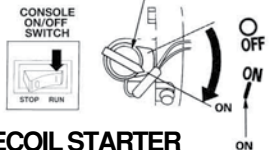


To restart a warm engine, leave the choke lever or choke rod in the OPEN position.

c. Move the throttle lever away from the MIN position, about 1/3 of the way toward the MAX position.



d. Turning the engine switch to the ON position.



RECOIL STARTER

Pull the starter grip lightly until you feel resistance, then pull briskly. Return the starter grip gently.

4) PREPARING THE TRENCHER FOR OPERATION

a. Start and warm up engine.

b. Put Wheel Drive Control Lever in neutral.

c. One wheel hub may be disengaged (free wheeling) for easier steering before driving machine to work location. (See Wheel Hub Feature)

d. Squeeze the safety Clutch Lever/Operator Presence Control and change the Wheel Direction Control to desired speed and direction.

e. Adjust the wheel speed and navigate the trencher to the starting position. The trencher is designed to dig toward the operator (with the Wheel drive Control Lever in reverse). With this in mind, position the machine to start the trench. **Note:** When initially engaging the rotating chain into the ground, be aware that in the hard or rocky ground the rotating trencher chain may aggressively dig in and lurch forward. For this reason make sure that there is sufficient clearance from structures, objects or people in front of the machine.

5) TRENCHING PROCEDURE:

Make sure that there is sufficient clearance from structures, objects or people in front of the machine

a. Put Wheel Drive Lever in neutral.

b. Be sure both hubs are engaged (turn hub lock handle clockwise). (See Free Wheel Hub Feature)

c. Have engine at full throttle (forward).

d. Hold Digging Chain Control Lever in On position.

e. Squeeze the safety Clutch Lever/Operator Presence Control.

f. Slowly lower the digging boom until the desired trench depth is achieved using the Digging Boom Control Lever.

g. Put Wheel Drive Control Lever in reverse. Start at low speed.

h. Adjust the wheel speed until a workable speed is reached Use a very slow speed for trenching and adjust for soil conditions as necessary. If objects such as rocks or roots jam in the chain, release the Safety Clutch Lever/Operator Presence Control, then reverse the chain to dislodge the debris. If necessary move the trencher forward a few inches and trench the area again.



WARNING - KEEP HANDS AND FEET CLEAR OF TRENCHING CHAIN AND OTHER MOVING PARTS AT ALL TIMES!



WARNING! - In case of difficulty, release the Safety Clutch Lever/Operator Presence Control All trenching action stops. Turn the Engine Stop button to STOP located either side on the main control console or the engine.

6) STOPPING THE ENGINE:

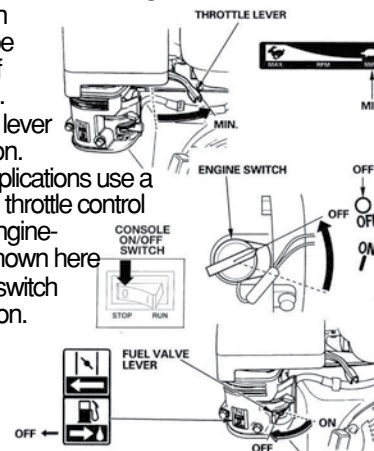
Shut off switch on console should be used, not shut off switch on engine.

a. Move the throttle lever to the MIN position.

Some engine applications use a remote-mounted throttle control rather than the engine-mounted lever shown here

b. Turn the engine switch to the OFF position.

c. Turn the fuel valve lever to the OFF position on console.



AFTER USE

1) Allow machine to cool down. Wash mud and dirt off of the hydraulic trencher. Ensure no water enters the carburettor

2) Remove any objects that may have wrapped around the trencher chain or assembly.

© Copyright 2013, Red Roo Sales & Service Company Pty. Ltd. 1301-0066-A

"The Right Way to Rent"



SAFETY PRECAUTIONS AND OPERATING INSTRUCTIONS



HT912 HYDRAULIC TRENCHER

REDROO.com

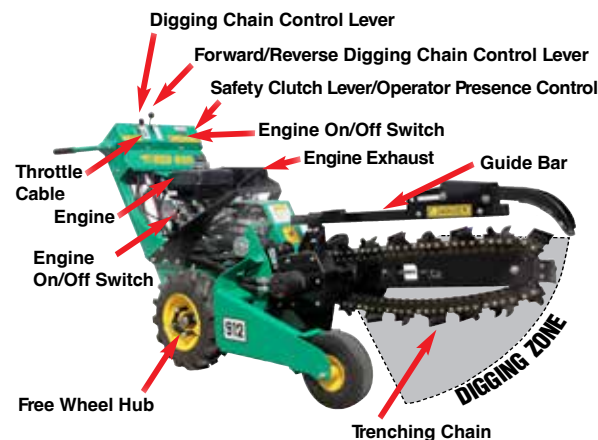
Commercial Environmental Equipment

SAFETY INSTRUCTIONS FOR HT912 USERS

USE COMMON SENSE AND PLENTY OF IT

- 1) **DO NOT** allow any person to operate the hydraulic trencher without first reading and understanding the safety instructions and operating instructions. **KNOW THE CONTROLS AND HOW TO STOP THE HYDRAULIC TRENCHER QUICKLY IN AN EMERGENCY.**
- 2) **NEVER** allow children to operate the hydraulic trencher.
- 3) **ALWAYS** wear protective clothing when operating the hydraulic trencher. This includes, but is not limited to, safety glasses, hard hat, loose fitting gloves, steel capped boots and hearing protection. **NEVER** wear loose fitting clothing or jewellery when operating the hydraulic trencher. Keep all clothing away from moving parts. Item could become caught in the machine, resulting in injury.
- 4) **ALWAYS** use hydraulic trencher in a well lighted area.
- 5) **ALWAYS** make certain that all control clutches are in the "disengaged" position prior to starting the engine. The safety clutch lever/Operator Presence Control on the left handlebar is for operator protection. **DO NOT** tape down or otherwise bypass this Safety Device.
- 6) **MAXIMUM ANGLE OF OPERATION DO NOT EXCEED 15° ANGLE** **ALWAYS** operate hydraulic trencher on level ground only. Police the area before trenching. Remove any foreign objects in the digging area eg bricks, rocks, wire and sticks. Locate and mark any sprinkler heads, water pipes, gas lines, electrical and telephone cables or any other hazard either below or above ground.
- 7) **DO NOT** leave the machine unattended while the engine is running. **DO NOT** park on incline or park perpendicular to slope. **DO NOT** freewheel down incline.
- 8) **DO NOT** overspeed the engine or alter the governor settings. Excessive speed is dangerous and will shorten engine life.
- 9) **NEVER** operate the hydraulic trencher when fatigued. **ALWAYS BE ALERT!** If you get tired while operating the hydraulic trencher, take a break. If you have any type of physical or mental condition that may be aggravated by strenuous work, consult with your physician before you operate this equipment. **NEVER** operate the hydraulic trencher under the influence of medication, alcohol or drugs.

- 10) **NEVER** operate the unit without the safety guards in place and in working order. Keep the unit well maintained and in good working order.
 - 11) **ALWAYS KEEP YOUR HANDS, FEET AND BODY AWAY FROM THE DIGGING CHAIN AND OTHER MOVING PARTS WHILE ENGINE IS RUNNING.**
 - 12) **DO NOT** allow other persons near the hydraulic trencher. It is up to the operator to keep bystanders and animals a minimum of 6 metres (20ft) away from the machine while in operation.
 - 13) **NEVER** operate the hydraulic trencher in an enclosed area. Engine exhaust contains carbon monoxide, an odourless and tasteless poison.
 - 14) **WARNING:** Hydraulic oil is under extreme pressure and can get under skin and burn or poison. Check for leaks with cardboard.
 - 15) **STOP** the engine and disconnect the spark plug lead(s) and allow engine to cool before inspecting or performing maintenance on the hydraulic trencher.
 - 16) **REFUELLING**
 - * Shut off engine. **DO NOT REFUEL AN ENGINE WHILE OPERATING!**
 - * Allow engine to cool. Minimum 5 minutes
 - * **USE UNLEADED FUEL ONLY. Use clean, fresh unleaded fuel.**
 - * **Do not mix oil with unleaded fuel.**
 - * Do not over-fill fuel tank. Allow space for fuel expansion.
 - * Do not smoke. *Allow no naked flame or hot material in refuelling area.
- * Use only approved fuel containers and funnels. Remember, fuel is a potential hazard.



HT912 OPERATING INSTRUCTIONS

TRANSPORT

- 1) Remove the hydraulic trencher from its trailer. Use caution.

BEFORE USE

- 1) Police the area. Remove any foreign objects from the area.
- 2) Identify and mark the location of sprinkler heads, gas pipes, telephone cables, etc.

OPERATION

- 1) Familiarize yourself with the hydraulic trencher and its controls.
- 2) **Free Wheel Hub Feature** - Operation: Pull one free wheeling pin slightly, using the split ring. Rotate the pin until the 3mm (1/8") diameter roll pin aligns with the slot in the mounting plate. Allow the pin to slide through the slot. Repeat for the other wheel. Roll the trencher until each pin drops into a hole in the hub. The wheel hubs are now locked. Reverse the procedure to unlock the wheels.

IGNITION: Must be in "ON" position to start. "OFF" to stop.

ENGINE: Throttle cable controls engine speed. Operate at full throttle (all the way forward).

WHEEL DRIVE CONTROL LEVER: Controls wheel speed forward or reverse after clutch lever is engaged.

DIGGING BOOM CONTROL LEVER: Raises and lowers the digging boom.

DIGGING CHAIN CONTROL LEVER: must be in "ON" position BEFORE clutch lever is depressed in order to start chain in motion. Chain moves in a forward direction after clutch lever is engaged.

FORWARD/REVERSE DIGGING CHAIN CONTROL LEVER: Allows manual operation of chain in forward or reverse rotation to dislodge objects or dig difficult terrain. (This control can be used with the clutch lever released.) To reverse chain, DIGGING CHAIN control must be in "OFF" position.

SAFETY CLUTCH LEVER/OPERATOR PRESENCE CONTROL: (At left handle grip) As the operator stands behind the machine in the operator position, activates WHEELDRIVE and DIGGING CHAIN controls when depressed. Stops all motion when released.